



catalog



Solutions for professional cleaning and sanitizing

Index

What sector are you in?	4	CS80-90-110	62
Our technologies.....	8	CS100-120	64
Our MISSION.....	14	HP4000.....	66
Our VISION.....	14	HP6000.....	68
Our VALUES.....	15		
Our COMMITMENT.....	16	Vacuum cleaners	
Our SUSTAINABILITY.....	18	CA BACK.....	72
Comac: people, processes and environment.....	20	CA Dry.....	73
		CA WD 1	74
Floor scrubbers		CA WD 2	75
Igea.....	24	CA WD 3	76
Vispa XS	25	CA Oil	83
Vispa 35.....	26	CA Pak.....	84
Vispa EVO	27	Carpet.....	85
Vispa XL	28		
Abila.....	29	Single disc machines	
L20	30	CM43 F	88
Antea.....	31	CM43 F DS.....	89
Versa.....	32	CM Mini Orbital.....	90
Vega.....	33	CM43 F Orbital.....	92
Omnia.....	34	CM43 Orbital.....	94
Innova 55	35	CM1500.....	96
Innova.....	36		
Innova Comfort.....	37	Pressure washers	
Optima	38	CI C10.....	100
C85.....	40	CI C15.....	101
C100.....	41	CI C20.....	102
C120.....	42	CI C20 EM.....	104
C130.....	44	CI C30.....	105
		CI C30 EM	106
Autonomous		CI C40 EM THERMIC.....	107
SELF.Y.....	47	CI H5.....	108
		CI H10.....	109
Comac4Water		CI H20 EM INOX.....	110
C85 NSC.....	50	CI H30.....	111
InAqua.....	51	CI H40 EM INOX.....	112
		CI H50.....	113
Combined			
Combimac.....	53	Sanitizer	
		E-Spray.....	116
Sweepers		Sanex.....	117
CS50	56		
CS500.....	57		
CS60	58		
CS700-800.....	60		

Wide range of professional floor cleaning machines

FLOOR SCRUBBERS



SWEEPERS



Choose the solution for you!

Comac4Water

AUTONOMOUS

COMBINED



VACUUM CLEANERS



SINGLE DISC MACHINES

SANITIZERS

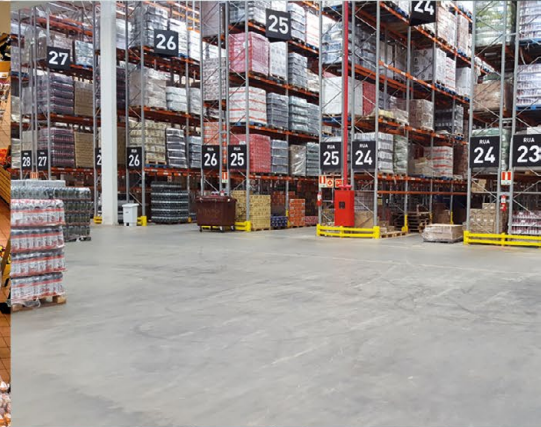


PRESSURE WASHERS



What sector are you in?

Every sector needs specific products to get the best cleaning.
Comac has dreamt up a solution to every requirement.





Industrial

Cleaning, in the industrial sector, is closely linked to productivity and to production quality. The most difficult dirt conditions on floors are definitely those found in the world of industry, and especially that of heavy industry.

The cleaning machines used in the industrial sector are subjected to constant use, this is why they need to be powerful and able to bear continuous and heavy duty working schedules. The research and development department at Comac is always careful to create products that are robust and destined to last over time, in order to bring not only short-term, but also long-term advantages.



Cleaning contractors

The cleaning contractor market is becoming increasingly more complex. Demanding customers, stiff competition, lack of qualified personnel and strict regulations are some of the aspects that lead cleaning contractors to seek maximum performance accomplished in a short time and at a minimum cost. A difficult objective to achieve, especially without the support of suitable equipment.

The modern technologies implemented by Comac help cleaning contractors to provide quality cleaning and maximum hygiene while drastically reducing labor costs. Through the mechanization of cleaning operations, in fact, it is possible to maximize results and minimize the costs of ownership while ensuring maximum efficiency.



Healthcare

The environments common to the health sector are all very different, but are distinguished by a single common denominator: the need to maintain high standards of cleaning, hygiene and sanitization. As these are places where sick people might reside for quite long periods, it is easy to understand how much, in this sector, cleaning is not a mere matter of appearance. Indeed, it is rather an essential tool to guarantee the well-being of patients, of their relatives and of health workers. For this reason, in the health sector, cleaning and sanitization operations are activities that must be performed at the highest level and as such should employ professional equipment.



Retail

Cleanliness in the retail sector is essential, in order to welcome customers in clean and sanitized environments. Indeed, the appearance of a shop not only contributes to enhancing the retail space's image but also to the actual shopping experience.

Environments common to the Retail sector usually are smaller and often they are manually cleaned due to the mistaken belief that it saves time and money, while underestimating the quality of results. A floor scrubber guarantees excellent cleaning results while increasing productivity and requiring less effort from the operator and Comac has a wide range on offer.



Large-scale retailing

A customer's experience begins the moment they enter a shop, and this is why cleaning has a key role in the large-scale retailing sector. Tidiness and cleanliness in a shopping center or supermarket bring added value to these environments, as they lead customers to feel at ease, making for a more pleasant shopping experience. This is why achieving high levels of cleaning, hygiene and sanitization in large-scale retailing environments has a positive effect on increasing business, making the mechanization of cleaning operations essential also from the perspective of reducing cleaning interventions' times and related costs.

Comac has always been committed to the development of professional cleaning products which maximize results while minimizing costs of ownership, key objectives in the large-scale retailing sector.

Logistics

The key requirements for a safe environment in the logistics sector are cleanliness, tidiness and organization. Under these conditions it is possible to increase productivity and, above all, guarantee a safe environment for the operators. Cleaning operations are essential in the logistics sector but they should not hinder the performance of normal activities. Floor cleaning, for example, must always be performed in a timely and constant manner to keep spaces clean and tidy, but to accomplish it in the right way it is necessary to employ industrial design machines characterized by severe cleaning, vacuuming and sweeping power. Comac designs professional cleaning machines capable of operating in difficult situations such as those occurring in the logistics sector: thanks to the technologies implemented, to the sturdiness and to the efficiency of these machines it is possible to work in complete safety among shelves to eliminate the remnants of packaging, paper or the dust that usually settles on floors.

Public

The trend relating to the environments common to the public sector is increasingly that to raise cleaning standards and maintain high quality hygiene standards. In the public sector accurate cleaning, also of surfaces, allows not only to enhance environments, but above all to safeguard the health of the people who visit them. However, these are also environments where the type of dirt found on floors is very diverse, and to meet all needs Comac offers a complete range of professional floor cleaning machines.

HoReCa

Operators in the HoReCa sector are aware that first impressions determine whether guests and customers feel at ease in a hotel or restaurant, and will also positively affect the whole experience.

To companies operating in the HoReCa sector offering their guests environments that are clean and sanitized is an excellent calling card, and it will also help to improve the image of the premises themselves. Cleaning operations should be performed daily but rapidly, efficiently and, above all, discreetly, so as not to disturb those who visit these establishments. This is why Comac has created machines with low sound emissions that allow to perform maintenance cleaning operations at any time of the day, thus also contributing to increased productivity.

Well-being and sports

Activities in the Well-being and Sports sector have enjoyed a tremendous success in the past years as to many people they represent places where they can find mental and physical well-being and where they can devote themselves to taking care of their body. Proper cleaning and sanitization of all surfaces of the establishment are however an excellent calling card for activities in the Well-being & Sports sector, but they above all guarantee hygiene and health because they help stopping the proliferation of viruses and bacteria thus safeguarding people's health.

There are only few occasions suitable to perform cleaning operations, and this is precisely why Comac has developed machines with low sound emissions that allow to clean at any time of the day without disturbing those who visit these facilities.



Handicraft

Companies belonging to the handicraft sector operate in different fields, from the mechanical to the textile, from the construction to the fashion industries... They mainly concern work environments and as such cleaning has a key role not only in facilitating and optimizing work but above all in increasing people's safety. A floor that is perfectly clean and immediately dry will reduce the risk of accidents or prevent personnel falling.

As these are environments of small or medium dimensions, using mechanized systems for cleaning noticeably increases productivity and guarantees results that are distinctly superior to those obtained using manual systems. To make cleaning operations even more productive Comac offers a range of professional floor cleaning machines that are extremely easy to use so that they can also be employed by non-specialized personnel.



Automotive

The cleanliness of environments common to the automotive sector is essential as it conveys a first impression to customers. Ensuring that environments are clean and welcoming helps to improve the customers' experience and to increase their level of trust. Considering car showrooms, for example, it is essential to ensure that the showroom meets customers' expectations and to achieve this it is necessary to employ mechanized cleaning systems that will provide highly professional results.

Comac's professional cleaning machines are powerful allies to heighten the sparkle of floors and showrooms.



Transport

The transport sector includes different environments that however share a common feature: a high flow of people. This is why continuous cleaning and sanitization of surfaces is essential to ensure the efficiency and safety of all structures frequented by people such as airports or railway stations.

Comac offers a complete range of machines to meet the most diverse cleaning needs required by the environments common to the transport sector, which include not only pedestrian areas, where types of light dirt concentrate, but also areas characterized by more heavy duty dirt such as oil and grease.



Our technologies

Comac has always designed and made products that aim to reduce the environmental impact of its cleaning operations. Our products are therefore highly customisable, so we can offer the best solution for the environment they are put to work in.

Comac Easy-Clean Tanks

A concrete aid to simplify cleaning and prevent unpleasant odors in floor scrubbers

- Facilitates the cleaning, hygiene and sanitization of the tanks of floor scrubbers
- Helps to prevent the unpleasant odor that can form inside recovery tanks
- Reduces the sedimentation of dirt, and as a result, the presence of any pathogenic agents that may be found inside the tanks
- Helps to improve the perception of cleanliness by those who may find themselves in the vicinity of the floor scrubber



Comac Antibacterial Tanks

A concrete aid against bacteria in floor scrubbing machine tanks

- Reduces the proliferation of bacteria inside tanks
- Contributes to reducing the formation of unpleasant odors inside the tanks of floor scrubbers, generated by the decay of organic materials
- Reduces the risk of dispersion of pathogenic agents into the surrounding environment
- Increases the well-being of the people who visit or work in the places where the floor scrubber operates
- Makes floor scrubbers safer, as one of the fundamental tools for restoring hygienic and sanitary conditions in healthcare environments



CCP - Comac Corrosion Protection

CCP – the Comac technology against the corrosion of the metallic parts of floor scrubbers

- Protection of the metal surfaces of the machine from corrosion
- The parts that are subject to the CCP treatment are very smooth, which also reduces the deposit of organisms, therefore simplifying the cleaning and maintenance operations of the machine
- Comac floor scrubbers with CCP that are destined for use in aggressive environments can thus work longer and require less extraordinary maintenance



Electrostatic hygienization

Effective and uniform hygienization thanks to the use of electrostatic technology

- Improved coverage of surfaces: the hygienizing solution is distributed in a uniform manner and reaches and envelops all surfaces, including the back of objects
- Reduction in costs thanks the smaller quantity of hygienizing product required to cover the surface compared to nebulization without electrostatic charge
- The reduction in the use of hygienizing product makes hygienization operations more respectful of the environment
- Reduction in the time dedicated to nebulization of the solution thanks to the greater efficiency of the transfer, courtesy of the electrostatic technology
- Prevents the risk of cross-contamination between surfaces, as there is no need to touch them after application





CED - Comac Electrostatic Disinfector

Comac technology allows the machine to scrub, dry and hygienize in one single step



- Mechanization of sanitization operations to render these effective and professional, reducing time and costs
- One single machine to clean floors and simultaneously hygienize surfaces, including vertical surfaces
- Comac floor scrubber sweepers equipped with CED also enable sweeping, as well as scrubbing, drying and hygienization in a single passage
- One single operator dedicated to cleaning and sanitization operations, for a considerable reduction in costs, time and labor
- Makes sanitization more effective, thanks to the previous cleaning operation carried out on the floor: organic and inorganic materials do not remain on the surface thus cannot interfere with the effectiveness of the sanitizing product
- Prevents the risk of cross-contamination between surfaces, as there is no need to carry out any further operations after the floor scrubber with active CED kit has passed over the area
- Maximum coverage of surfaces, including those that are vertical or irregular
- Reduced consumption of hygienizing solution through the use of electrostatic technology
- Fully adaptable to the needs of the site thanks to the option of selecting the nozzles and the full adjustability of the upper turbines
- Option to install the hygienizing spray gun, which, using the solution present in the dedicated tank, enables the hygienization of the floor scrubber at the end of the work shift
- It can work in different types of environment, in accordance with the model of floor scrubber on which it is installed
- Also available as a separate kit for installation on floor scrubbers purchased previously
- The operator is not in close contact with the nebulized solution, and as such, his or her safety is also safeguarded during use
- Thanks to the easy loading of the special canister, it is possible to use different types of hygienizing product, selecting the one that is most suitable for the area to be treated
- Separate canisters for the hygienizing solution and the detergent solution to be used for the cleaning
- Option to document the sanitization operations and obtain the relevant reports, thanks to the use of the CFC system

Lithium battery

Lightweight, these batteries can be recharged whenever desired and are always ready to use



- Quick, easy recharging thanks to the battery charger which takes just 30 minutes to ensure 50% of the battery capacity
- Partial recharges don't jeopardise the condition of the battery
- Improved energy efficiency: +30% compared with lead batteries
- Longer work times for the machines, with reduced recharging times
- Ideal for use in hot and cold places; thanks to their versatility, they're the best choice for next generation scrubbing machines
- Recommended for use over several shifts, and for intensive conditions
- Minimised maintenance costs, creating long-term economic benefits

Eco mode

The Comac technology for the reduction of noise that allows resources to be saved and waste to be reduced



- Reduction in the noise level produced by floor scrubbers, so these can also be used to work in sensitive environments and in the presence of people
- Reduced waste of water, detergent and energy
- Energy savings and subsequent increase in the working autonomy of the floor scrubber
- Coverage of a wider surface thanks to the optimization of the use of resources and the reduction in consumption

Our technologies

CDS - Comac Dosing System

The Comac technology for reducing the flow, cutting waste and improving cleaning performance

- Up to 50% reduction in chemical product waste
- Up to 50% reduction in waste of the water used for cleaning operations
- Improved performance, as the solution outlet in the center of the brush(es) enables even distribution over the entire surface. In addition, waste due to spraying to the sides is also reduced
- Thanks to the ability to easily replace the detergent canister, different types of chemicals can be brought to the work site, allowing a specific product to be used for each area to be treated without wastage, as could occur with a traditional machine
- Customization of the distribution of the solution directly from the instrument panel of the machine
- The correct dosing of the chemical product makes it possible to prevent deposits from forming on the floor and thus compromising the shine, or even worse, making it slippery to the detriment of safety
- Optimization of cleaning times, as it enables the machine to work for longer with a single tank, thus reducing the time taken to fill with water and drain



NSC - Non Stop Cleaning

The Comac technology installed on board the machine which enables the scrubbing water to be reused for multiple days, for cleaning that respects the environment

- Up to 80% reduction in water used for cleaning operations
- Up to 90% reduction of chemical used
- Up to 85% reduction in the waste water generated, and thus lower costs of ownership and improved environmental protection
- Optimization of cleaning times, as the machine can work without interruptions for an entire day, with an 85% saving in pit stop times



ReWater

The Comac technology installed on board the machine which increases productivity and reuses the water used by floor scrubbers

- Up to 50% reduction in solution used for cleaning operations
- Optimization of cleaning times, as the machine can work without interruptions for an entire day, with an 75% saving in pit stop times
- Increased productivity compared to a standard machine



CSF - Constant Solution Flow

Constant Solution Flow for the homogeneous and uniform distribution of the solution

- Delivery of the solution is homogeneous and uniform across the entire working width
- Improved cleaning efficiency even with low flow rates
- Optimization of the use of the detergent solution



Stop&Go

The system for making cleaning operations more economical, optimizing consumption and reducing emissions

- Consumption optimization
- Reduced costs and emissions



SSC - Solution Smart Control

Solution Smart Control for the control of the flow of solution

- Improved management of the flow of solution
- Reduction in waste
- Water and detergent savings



Our technologies

CFC - Comac Fleet Care

The technology designed by Comac for the management of fleets that increases efficiency and reduces costs



- Comprehensive overview of the fleet available at any point, providing access to useful, detailed information
- Easy analysis, problem resolution and preventive maintenance, thanks to the constant monitoring of the condition of the machine
- Optimization of the battery use of the floor scrubber, thanks to the monitoring of the charge cycles and condition
- Customized alerts in case of issues, incorrect or unscheduled use, with the option of choosing the type of notification you wish to receive
- Detailed documentation of the work carried out, thanks to the option of downloading customizable reports, free of charge and with no limits
- Precise geolocalization of the fleet
- Prevention of the risk of theft; where necessary, an alarm enables a warning to be received if a machine leaves the predefined work site
- Monitoring of CO₂ consumption to gain an estimate of the consumption of each individual machine and of the entire fleet
- Improved management of the fleet and of planning of operations
- Reduction of costs relating to management, incorrect use, operations and repairs in case of breakdowns
- Option to configure a number of the parameters of the machine in accordance with the type of access to the system

Easy Fleet

The technology for street sweepers by Comac that enables the digitization of sweeping operations



- Money savings and increased productivity
- The sweeper can be controlled remotely, for prompt intervention in case of unforeseen events
- Enables efficient programming of periodic technical maintenance in order to preserve the value of the sweeper over time
- The ability to check for faults and replace damaged components enables a more flexible approach to maintenance operations under warranty
- The collection of data and statistical information allows the management of street sweepers to be improved, thus increasing their service life

PM - Pressure Monitoring

The Comac system for monitoring the pressure on the brushes



- Constant monitoring of the power dispensed by the motors on the brushes
- Improved cleaning performance and maximum efficacy on all floors, including those that are uneven
- Simplified use of the floor scrubber
- Protects the motors, preventing the possibility of misuse

IPM - Intelligent Pressure Monitoring

The solution for constant and intelligent monitoring of the pressure on the brushes



- Constant and accurate measurement of the pressure exerted on the brushes of the floor scrubber
- Improved cleaning performance and maximum efficacy, even in situations requiring heavy duty cleaning
- Simplified use of the floor scrubber
- Precise, real-time indication of the pressure on the brushes (in kg)

Working program selector

A switch with an infinite number of possibilities to make any operation easy



- User-friendly
- Less training necessary in order to use the floor scrubber
- Immediate change of function, automatically managed by the machine

Display Touch Screen

The intelligent interface for intelligent machinery



- User-friendly
- Less training necessary in order to use the floor scrubber
- Selection of the mode in a single touch
- On board video tutorials

Our technologies

Rear view camera

Maximum comfort and safety for the operator

- Prevention of any accidents that could occur during the use of floor scrubbers
- Protection of the operator and any people who may be in the vicinity of the floor scrubber
- Reduced operator effort, enabling him or her to work safely without having to turn around to check the cleaning performance or the presence of any obstacles



Hybrid

Hybrid technology, the benefits of electric and the performance of a gasoline motor

- Cleaning operations become more respectful of the environment
- Option to sweep both indoors and outdoors
- 7.5 h of continuous work when the two power supplies are alternated
- Reduced consumption which enables 40000 sq.m. to be swept with a full tank of gasoline
- Very low noise levels
- The battery charging times are reduced dramatically
- Low maintenance costs



Anti-collision sensor

Maximum safety and zero worries for the operator

- Prevention of any accidents that could occur during the use of floor scrubbers
- Protection of the operator and any people who may be in the vicinity of the floor scrubber
- Reduced operator effort, enabling him or her to work safely without having to worry about potential obstacles



Moving brush head

The Comac solution for effective cleaning, even along walls

- Greater comfort for the operator
- Scrubbing also possible along walls
- Prevention of damage to the body of the floor scrubber
- Prevention of damage to walls and vertical objects



Emergency stop

Safety within easy reach

- Safety for the operator
- The function is always available in all operational modes
- Easy operation and immediate stop



Blue Safety Spotlight

The safety light for avoiding distractions and workplace accidents

- Prior warning: the blue light beam projected on the ground arrives before the machine, guaranteeing total safety to avoid any possible hazardous situations
- All-round safety: this device can be used with both forward and reverse movements
- LED technology: high glare-free lighting power with low energy consumption
- Long lifespan: the low operating temperature of LED lamps guarantees a longer lifespan for the device
- Visual warning: enhanced safety in the driving areas and places with poor visibility, thanks to the light beam
- Safety without inconvenience: no more acoustic warnings that disturb both drivers and pedestrians; just a visual warning for silent protection



LED lighting

Improved visibility for maximum safety

- Optimum visibility of the working environment
- Visibility of the machine and thus greater safety for the operator
- High lighting efficiency
- Reduced consumption compared to standard headlights
- LEDs retain 70% of their initial light output after 50,000 hours, according to EN50107 standards
- Longer service life compared to traditional bulbs
- LED technology does not pollute and does not contain dangerous substances
- Does not require maintenance



Our technologies

Air conditioning

Well-being for the operator

- The operator can work in maximum comfort
- The air inside the cab is of better quality
- Reduction in noise for the operator, who can work with the windows closed



Orbital cleaning

Maximum performance, extreme versatility and reduced consumption

- Excellent versatility thanks to the choice of specific pads for working on any type of floor and in any environment
- High levels of performance that make orbital machines particularly suitable for heavy duty operations
- Reduced consumption of detergent solution; in some cases, they can also work without detergents
- Homogeneous cleaning result across the entire surface of the pad
- The machines equipped with rectangular pad can effectively clean along walls and in the most difficult corners
- The orbital movement does not create side splashes and keeps the water inside the work area, preventing the solution from being dispersed
- Reduction in the consumption of water, detergent and energy thanks to the effective orbital movement



Electric filter shaker

The Comac system that makes cleaning the filter effective even when there is a large amount of dust present

- User-friendly
- Less effort for the operator
- Greater productivity
- Reduced extraordinary maintenance



Intelligent turbine support

The technological solution by Comac that allows easy access to the filter

- Ease of access to the filter
- Simplified maintenance
- Zero effort to disassemble the vacuum cleaner
- Turbine always in place



Coaxial turbine

The Comac technology for reducing waste and increasing performance

- Reduction in wasted energy
- Less maintenance required
- Greater service life of the turbine
- Option of working long shifts



Twin Action System

The only system that combines the power of the mechanical action with the efficacy of the vacuuming action

- The mechanical action of the system enables waste to be collected and the volume of this to be reduced
- The vacuum action of the system captures dust and collects the material
- Flexible use: The Twin Action system allows operation even on bumpy road surfaces: tree roots or protruding manholes are not a problem.
- The Twin Action system concentrates the work on the central brush and limits the use of the side brushes. The action of the side brushes thus becomes auxiliary, and these are only used along the walls and on pavements, thus reducing water usage.
- Effectively vacuums and traps PM 10 and PM 2.5 fine dust
- Minimizes the use of water, for a saving of 150,000 liters a year. The water is only used in the external part of the brushes in nebulized form, in order to control the dust.
- Reduction of maintenance costs related to the filling system



SST - Spray & Suction Tool

The Comac accessory designed to reach even the most difficult areas

- Cleaning and drying of even the most difficult to reach areas such as corners
- Easy, fast cleaning of the recovery tank





Our MISSION

Bringing value to cleaning with professional solutions that make people's lives better: that is the keystone of our work.

We defend and spread a culture of cleanliness, providing solutions that are innovative and reliable and that improve people's quality of life

Cleaning lets us live in environments that are safe for our health, which is why we are always committed to promoting it and offering solutions that make it extremely professional.

We defend and spread a culture of cleanliness and its value because we are utterly convinced that cleaning has revolutionized the world we live in and will continue to do so.

We strive for innovation every day, to understand and predict the future so our cleaning solutions can be reliable and better people's quality of life.



Our VISION

We have a clearly defined vision of our goals, all of which are based on the values that have always made Comac stand out.

We dream of a future where cleaning is eco-friendly, accessible to all and improves the quality of the places and environments where people work and live.

Our VALUES

Every choice, every action, every product comes from the values that have guided Comac since its founding.

'Comac: professional people' is more than just a slogan, it is a promise we have kept for over fifty years

#comacprofessionalpeople

We are proud of our company's long history, in which every person, every collaborator has played a decisive part in create what Comac is today. It is a company made up of people who have made professionalism their strong suit, who have helped define the values by which Comac is known all over the world.

PEOPLE



FAMILY



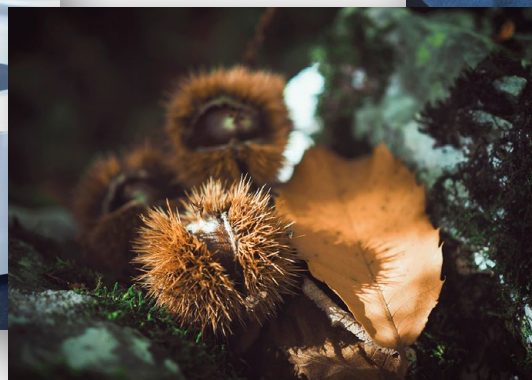
COMMITMENT TO CUSTOMERS



/kwa:təti/
Quality
noun

1. A high level of value or excellence.

QUALITY AND INNOVATION



RESPONSIBILITY



LOYALTY

Our COMMITMENT

We know how important it is to respect the environment, so we are always committed to minimizing our impact on it and making the people involved in our work more aware on this front.

Through our responsible use of resources, we strive to minimize the environmental impact of our whole production process, in order to make the cleaning sector more switched on to solutions that respect the environment

We have set ourselves an ambitious goal but we have been working for years to reach it. We have involved all company areas, in everything from designing to finally delivering our products, right up to making channels for distribution and final users.

Cleaning has to improve the environments where people live, but it also needs to protect the environment for the future generations who will live in it.

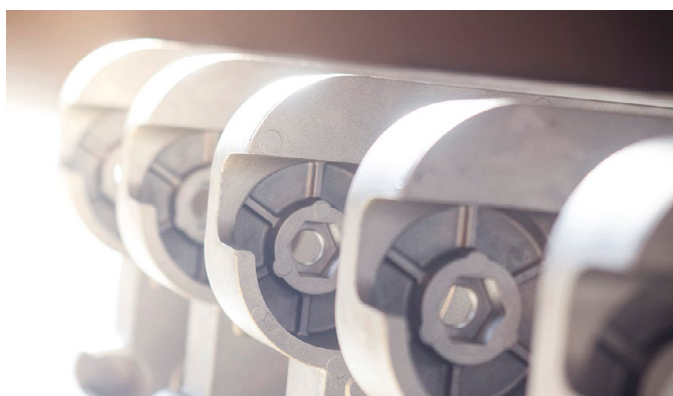


PRODUCTION THAT SAVES RESOURCES

We are committed to making products that respect the environment, investing in sustainable solutions and technologies, searching for material that is easy to recycle and making our whole production process have a low environmental impact. We have combined our own and our suppliers' knowledge of raw materials to use resources more efficiently. We check the materials used in our production cycle constantly. We strive, where possible, to use recyclable and secondary raw materials. That is why we are looking at market developments in the field of recycled plastic, weighing up the pros and cons of the material. Not all recyclable materials satisfy our quality requirements, but our commitment to maximum efficiency in resources is continuous and we try not to compromise the quality of our products.

DURABILITY AND AVAILABILITY

When we design a new product we take functionality, quality of materials, availability of components for maintenance and the lifespan of the product itself as our starting points. We know that one way not to have a bad impact on the environment is to make sure our products are long-lasting and resistant and that the materials they are made of can easily be recycled. It is with these principles in mind that we strive to design the machines of the future, for making cleaning ever more eco-friendly.





LET'S ENCOURAGE GOOD HABITS

We know the impact our work has on the environment, which is why we are looking to change our company's habits to cut down on consumption and waste. We encourage a culture of social responsibility in business, including within our company. We try to run responsible initiatives that can fit in with the daily lives of the people working at our company.

Whether it is managing its air-conditioning and heating systems responsibly, separating and recycling its rubbish, or eradicating throwaway plastic from its vending machines, Comac gets its people involved every day in making its work more sustainable.

TECHNOLOGIES DESIGNED TO RESPECT THE ENVIRONMENT

We have always committed to designing and making highly competitive products that offer huge productivity combined with less environmental impact. Now more than ever, thanks to ever more innovative technologies, Comac machines can optimize how resources are used, to stop water, energy and chemical getting wasted, make less sound pollution and save time on cleaning operations. Comac technologies designed to respect the environment also help their operators use resources more responsibly, at the same time as offering a range of advantages when it comes to cutting cleaning costs, granting more working autonomy, saving time and improving cleaning results.



CONCRETE ACTION: THE CARBON FOOTPRINT FROM COMAC'S FLOOR SCRUBBERS

Comac's commitment to environmental sustainability translates into concrete action. That is why we have started measuring the carbon footprint of some of our products. We know that if we want to improve we need to understand and above all measure what we are doing. We have therefore worked to measure our carbon footprint, evaluating life cycles from cradle to grave and achieving the 'CFP Systematic Approach' certification for some ranges of Comac's latest floor scrubbers. The 'Systematic Approach' for measuring carbon footprints has been certified by Bureau Veritas under ISO standard 14067:2018. This means we are able to come up with a real, certified figure for the environmental performance of our floor scrubbers.



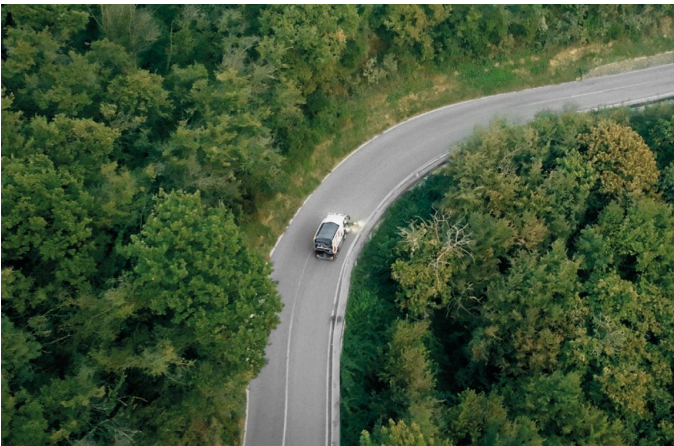
Our SUSTAINABILITY

Climate change is a global challenge requiring everyone to commit, including Comac. In addition to innovating its cleaning machines to make them even more sustainable, Comac is on a path that embraces social, environmental and governance topics to help create a better future.

Sustainability-related topics are a key stage in Comac's path as they allow for building a better and above all, more conscious future. In addition to technological innovation, Comac sustainability involves an ongoing commitment to social, environmental and governance topics.

We have only just begun to feel the consequences of the profound changes our planet is experiencing due to climate change. Therefore, we each have a responsibility to do everything possible to ensure a bright and sustainable future for generations to come.

Our ongoing commitment does not end with the development of increasingly advanced and intelligent cleaning systems that continually improve the sustainability of operations. The Comac path to a better future also addresses social, environmental and governance topics.



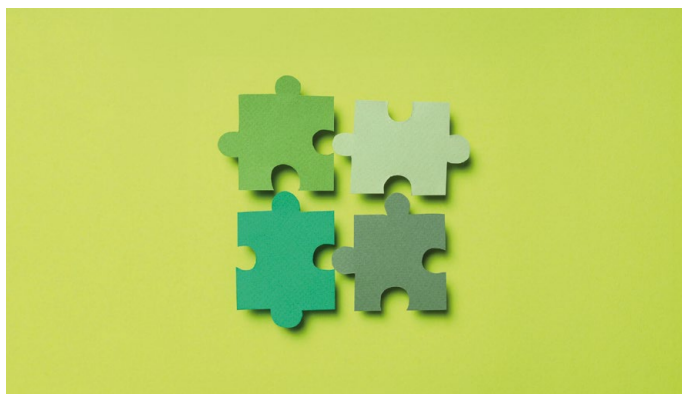
COMAC'S SUSTAINABILITY PATH

Thanks to our people and the innovative cleaning solutions we continue to offer the market, we are achieving increasingly ambitious milestones, further enhancing our awareness of how important it is that our growth be sustainable. An awareness that since 2022, has marked a new and very important milestone for Comac: the publication of its first Sustainability Report, through which we aim to represent the company's vision with regard to sustainable development. This is – and will be – an annual snapshot of the company's sustainable path representing our commitment to monitoring and reducing our environmental impact, valuing our people, supporting the community and achieving satisfactory economic performance.

COMAC FOR INCLUSION

We want every person at Comac to feel respected and comfortable regardless of their gender, age, ethnicity, different abilities, health, political ideology, sexual orientation or identity. Hence, we are committed to fighting all forms of prejudice. We strive to create awareness of individual and collective responsibility to encourage this cultural transition within our company and, therefore, within society.

Each person brings something special and unique to Comac, which is why our corporate decisions are guided by our commitment to promoting balanced social and economic growth that takes into account each person's unique qualities. We promote values of inclusivity through partnerships and initiatives in support of projects that create awareness among people and communities.





COMAC FOR CLIMATE CHANGE

At Comac, we understand the urgency of climate change and are actively committed to minimising the environmental impact of our actions. To this end, we have implemented solid measures, focusing on energy efficiency and the use of innovative technology for our cleaning machines. However, in addition to striving to develop more technically sustainable solutions, we also promote awareness within the company with a view to making everyone aware of the most environmentally friendly practices. We have a broad vision and, therefore, aim to convey our commitment outside Comac, seeking to collaborate with partners that share our same commitment to a greener future. Our path to climate sustainability is ongoing, driving us to constantly explore new initiatives and integrate increasingly eco-friendly practices.

COMAC AND ITS COMMITMENT TO SDGs

The Comac sustainable path also encompasses our commitment and responsibility with regard to Sustainable Development Goals (SDGs), a set of 17 goals and 169 associated targets aimed at the social and economic development of society and protection of the planet. The SDGs constitute the 2030 Agenda for Sustainable Development, signed in 2015 by the governments of the UN member states.

Our commitment to these SDGs is tangible proof of Comac's contribution to a more sustainable future in line with the goals for harmonious and responsible growth.



COMAC'S BIODIVERSITY OASIS

Perched in the hills of Tregnago, a few kilometres from Verona, we created a project that embodies our sustainability vision and respect for the environment: Comac's biodiversity oasis. Created in conjunction with 3Bee, a nature tech company which develops biodiversity monitoring and protection technologies, Comac's oasis is a concrete commitment towards a greener future. Comac's small but significant contribution towards environmental and biodiversity protection.

DIGITAL SUSTAINABILITY

Sustainability isn't just about the products we create; it encompasses every aspect of Comac's activities, including our digital impact. The internet is one of the most revolutionary inventions of our time, but it comes with a hidden cost that we often overlook: digital pollution. The environmental impact of online activities is real and constantly growing, with the web significantly contributing to global CO₂ emissions. That's why we decided to address this challenge with an innovative project aimed at making our company website greener and more efficient.



Comac: people, processes and environment.

Key to success

Comac's certifications

In Comac we want to meet the highest standards, deliver superior value for our employees, customers while acting sustainably. Therefore, it is our priority to ensure that all of our processes meet the most up-to-date international certification standards.



ISO 9001:2015

Refers to an organizational model based on a process guide using quality management principles, essential for good company direction.



ISO 14001:2015

Is the official recognition guaranteeing that the environmental impact of the business is being kept under control, with an ongoing commitment to reduce that impact.



ISO 45001:2023

Highlights the active commitment to the protection of workers' health, via specific procedures, investments and continuous training.



ISO 14064-1:2018

Defines the requirements for the quantification and monitoring of the Organizational Carbon Footprint (CFO), enabling Comac to measure and manage direct and indirect greenhouse gas emissions in accordance with internationally recognized criteria.



SA8000:2014

It concerns the sphere of Social Responsibility regarding the conditions of personnel and the promotion of ethical and fair treatment. Its requirements extend to the entire Comac supplier chain.



Italian Alliance for Cleaning Excellence

Certified quality mark promoted by AFIDAMP and verified by an independent body, attesting the excellence of Italian manufacturers in the professional cleaning sector. It is based on objective criteria related to industrial strength, product quality, innovation, sustainability and local roots, enabling Comac to stand out in national and international markets.

Product certifications

The certifications regarding our products are aimed to assuring their conformity to technical norms and standards recognized by the market meeting the demand coming from the context in which Comac operates. We firmly believe that product certifications enhance the added value on the marked of our products.



PM10 and PM2.5

Comac has been certified for its ability to clear fine dust from city streets, cutting the high levels of PM10 and PM2.5 in the air we breathe every day.



ISO 14067:2018

ISO 14067 sets out the requisites and guide lines for quantifying a product's carbon footprint. The 'CFP Systematic Approach' ('CFP' standing for 'product carbon footprint') lets you calculate the amount of CO₂eq emitted throughout a scrubbing machine's life, per 1 cleaned hour.

Integrated policy

Comac was born in March 1974 and since that time the company has just grown and grown. The experience we have gained over the years, combined with the sheer quality of the products we offer, are a winning formula in the field of our Italian and international markets. Constant technological evolution, ever greater competitiveness, specific market requests: all these things are why our customers choose and appreciate us today. We are a stamp of efficiency, quality, price, reliability and service for their businesses. Our goal is to put strategies of constant improvement in place. To achieve that we must strive to conduct ourselves ethically in the way we treat our staff around the world. Comac's directors are committed to helping put this integrated policy into practice and respecting the principles in it. The integrated policy is checked and updated regularly in order to make sure it is valid and corresponds to the demands of every concerned when it comes to the company.

Ethical Code

The company code of conduct reflects our commitment to promoting a culture based on honesty, integrity and trustworthiness, and outlines the basic principles and policies that each employee is required to respect. The Company COMAC is firmly committed to maintaining the highest possible standards of conduct in the execution of its business activities.

FLOOR SC



Comac produces a complete range of professional floor scrubbers that guarantee the effective cleaning of both small and of large spaces. Efficient and productive, the Comac floor scrubbers are also designed to be extremely easy to use.

Walk-behind floor scrubbers

Compact and easy to handle, the Comac walk-behind floor scrubbers are the ideal solution for cleaning small and medium areas.



Igea



Vispa XS



Vispa 35



Vispa EVO



Vispa XL



Abila



L20



Antea



Versa



Vega



Omnia

ROBOTS



Ride-on floor scrubbers

Maximum productivity and comfort for the operator, a range of ride-on floor scrubbers suitable for cleaning medium and large areas.



Innova 55



Innova



Innova Comfort



Optima



C85



C100



C120



C130

Igea is Comac's most compact floor scrubber, designed to replace manual cleaning systems like mops and buckets. Igea is a micro floor scrubber suitable for maintenance cleaning of surfaces up to 300 sq.m.

Its extremely compact dimensions make it perfect for working in small or highly cluttered spaces like offices, shops, bars and small businesses, guaranteeing professional mechanized cleaning also in these environments.



KEY ELEMENTS

- Ergonomic design makes it a floor scrubber that's extremely comfortable to use
- Lightweight and easy to transport so that it can be used wherever needed. Igea is foldable and you can both lift it by its carrying handle and pull it along on its wheels like a trolley
- Igea's joint means that you can scrub in all directions
- It leaves the surfaces completely hygienized and immediately dry to prevent the risk of slipping
- It cleans along walls and under tables
- It's always ready to use
- Handy compact battery charger to recharge Igea anywhere
- Equipped with front light for greater visibility during cleaning operations



TECHNICAL DATA		Igea
Theoretical productivity	up to sqm/h	300
Scrubbing width	mm	340
Brushes, quantity and type	-	1 - Cylindrical
Brush Ø	mm	Ø110x340
Solution tank	l	1.2
Recovery tank	l	1
Supply/traction	V	24/semi aut.
Autonomy up to	h	1
Machine dimensions (Lxhxa)	mm	395x1295x445
Squeegee width	mm	395
GVW (Gross Vehicle Weight)	Kg	10
Sound pressure level	db	<70

Vispa XS is the revolutionary floor scrubber with lithium battery that offers professional results in small, congested spaces, making cleaning professional on demand. Thanks to its compact dimensions, it's the perfect solution for cleaning floors in fast food outlets, restaurants, bars, shops, small businesses and offices.

Vispa XS is suitable for all maintenance cleaning activities in small and cluttered places, up to 800 sq.m.



KEY ELEMENTS

- Comfortable and easy to use thanks to user-friendly controls on the steering wheel
- Height and tilt of the handlebars can be adjusted to guarantee the maximum comfort for the operator, even during extended use
- Frame and brush head made of corrosion resistant aluminum, to make a floor scrubber that's robust and lightweight at the same time
- Rotary head equipped with parabolic squeegee which continuously follows the direction of the machine, for perfect scrubbing and drying results in any direction
- The squeegee can also dry backwards, making cleaning operations under tables and chairs even easier
- Brush assembly is laterally offset in relation to the machine body, for perfect cleaning along walls
- Once folded, it can be carried easily with the handle on the control bar or pulled along on its wheels like a trolley
- Thanks to its small dimensions it can be stored anywhere easily, even in the smallest closet



TECHNICAL DATA		Vispa XS
Theoretical productivity	up to sqm/h	900
Scrubbing width	mm	280
Brushes, quantity and type	-	1 - Disc
Brush Ø	mm	280
Pressure on the brush	Kg	10
Solution tank	l	3
Recovery tank	l	4
Supply/traction	V	36/semi aut.
Autonomy up to	h	1
Machine dimensions (Lxhxa)	mm	555x1050x375
Squeegee width	mm	325
GVW (Gross Vehicle Weight)	Kg	23
Sound pressure level	db	<70

vispa 35

Vispa 35 is the floor scrubber that has revolutionized cleaning operations in small and congested areas because it's perfect to replace manual cleaning systems. Floors are scrubbed, dried and hygienized in a single passage, so that they're immediately safe to walk on.

Designed for cleaning small shops, offices, canteens, restaurants, wellness centers, hair salons, doctors surgeries and nursery and other schools, Vispa 35 offers all the advantages of a professional scrubbing machine, with the practicality and compactness that have always distinguished it.

Vispa 35 is suitable for maintenance cleaning of floors up to 1.000 sq.m.
It is available in battery-powered and cable-powered scrubbing version and battery-powered sweeping version.



KEY ELEMENTS

- Two different brush head types to get optimal results on any floor: with disc brush (B) or cylindrical brushes (BS)
- Height and tilt of the handlebars can be adjusted to guarantee the maximum comfort for the operator, even during extended use
- The automatic brush and squeegee adjustment system allows the machine to be used automatically on any type of floor
- Thanks to the combined action of the suction motor and the squeegee swinging around the brush, perfect drying is ensured also on bends
- Extreme flexibility is provided by the movement of the handlebars, which can bend by 180°, and by the compact design built around the brush head
- Vispa 35 B-BS has an on-board battery charger, so you just connect the battery charger cable to any common electricity socket to recharge the machine
- Vispa 35 BS, the roller sweeping version, is even capable of collecting small solid debris and can dry even when reversing thanks to its front squeegee



TECHNICAL DATA		Vispa 35 E	Vispa 35 B	Vispa 35 BS
Theoretical productivity	up to sqm/h	1050	1050	1010
Scrubbing width	mm	350	350	350
Brushes, quantity and type	-	1 - Disc	1 - Disc	2 - Cylindrical
Brush Ø	mm	350	350	Ø110x335-330
Pressure on the brush	Kg	17	20	14,5
Solution tank	l	8	10	10
Recovery tank	l	10	10	10
Supply/traction	V	220-230/semi aut.	12/semi aut.	12/semi aut.
Autonomy up to	h	-	1	1
Machine dimensions (LxHxA)	mm	620x1050x440	682x1018x440	718x1105x460
Squeegee width	mm	440	440	525
GVW (Gross Vehicle Weight)	Kg	42,7	77	69
Sound pressure level	db	<70	<70	<70

Vispa EVO is the compact, powerful scrubbing machine that's up to tackling the most stubborn dirt. It's ideal for the maintenance cleaning of small and medium-sized areas, even when cluttered.

It's the evolution of the compact Comac scrubbing machines, as it offers the many well-known characteristics of walk-behinds, combining agility, power, reliability and technological innovation in a unique example of pure user pleasure.

Vispa EVO is suitable for maintenance cleaning of floors up to 1.300 sq.m. and is available in a battery-powered scrubbing version.



KEY ELEMENTS

- The handlebars can be completely closed towards the machine body, enabling the scrubbing machine to be put away even in a small space
- Height and tilt of the handlebars can be adjusted to guarantee the maximum comfort for the operator, even during extended use
- User-friendliness and simple maintenance of this professional scrubbing machine make it perfect even for less experienced operators
- The structure is in polyethylene, designed to protect all the mechanical parts and guarantee solidity and robustness
- The parabolic squeegee which continuously follows the direction of the machine, even on bends, offers perfect scrubbing and drying results in any direction
- Handy cleaning solution level indicator tube
- The integrated battery charger (optional) enables Vispa EVO to be recharged anywhere, so time isn't wasted to reach a specific recharging point
- Parts requiring daily maintenance distinguished by yellow color



TECHNICAL DATA		Vispa EVO
Theoretical productivity	up to sqm/h	1000
Scrubbing width	mm	355
Brushes, quantity and type	-	1 - Disc
Brush Ø	mm	355
Pressure on the brush	Kg	30
Solution tank	l	15
Recovery tank	l	17
Supply/traction	V	24/semi aut.
Autonomy up to	h	2 (Eco Mode)
Machine dimensions (Lxhxa)	mm	791x1110x490
Squeegee width	mm	440
GVW (Gross Vehicle Weight)	Kg	84
Sound pressure level	db	<70
Sound pressure level (Eco mode)	db	61,4

Vispa XL is a powerful, cutting-edge floor scrubber, but is also extremely easy to use and maneuverable. With a 43 cm working width and an exclusive design, it fits perfectly into the existing range, becoming a new ally in maintenance cleaning operations in small and medium-sized spaces, including those that are cluttered, and tackling even the most stubborn dirt.

Despite its small size, the machine is equipped with the same technology as the larger models, enabling you to complete your fleet with a compact, high-performance solution.

Robust and reliable, Vispa XL is also practical and easy to handle, so suitable for cleaning floors in the HoReCa, cleaning contractors, retail, well-being and sports sectors and all restricted areas that require power and excellent performance.

Vispa XL is suitable for maintenance cleaning of floors up to 1.600 sq.m. and is available in a battery-powered scrubbing version.



KEY ELEMENTS

- Available in the disc version with traction (BT) or without (B) or in the roto-orbital version with traction (BTO)
- The handlebars can be completely closed towards the machine body, enabling the scrubbing machine to be put away even in a small space
- Height and tilt of the handlebars can be adjusted to guarantee the maximum comfort for the operator, even during extended use
- User-friendliness and simple maintenance make it perfect even for less experienced operators
- The structure is in polyethylene, designed to protect all the mechanical parts and guarantee solidity and robustness
- The parabolic squeegee which continuously follows the direction of the machine, even on bends, offers perfect scrubbing and drying results in any direction
- Handy cleaning solution level indicator tube
- The integrated battery charger (optional) enables Vispa XL to be recharged anywhere, so time isn't wasted to reach a specific recharging point
- Parts requiring daily maintenance distinguished by yellow color



TECHNICAL DATA		Vispa XL	Vispa XL BT	Vispa XL BTO
Theoretical productivity	up to sqm/h	1200	1720	1720
Scrubbing width	mm	430	430	430
Brushes, quantity and type	-	1 - Disc	1 - Disc	1 - Disc pad
Brush Ø	mm	430	430	430
Pressure on the brush	Kg	40	40	40
Solution tank	l	25	25	25
Recovery tank	l	27	27	27
Supply/traction	V	24/semi aut.	24/aut.	24/aut.
Autonomy up to	h	3 (Eco Mode)	2 (Eco Mode)	2 (Eco Mode)
Machine dimensions (Lxhxa)	mm	895x1215x530	895x1215x530	895x1215x530
Squeegee width	mm	516	516	516
GVW (Gross Vehicle Weight)	Kg	130	130	130
Sound pressure level	db	<70	<70	<70

Abila is a very practical and compact walk-behind floor scrubber, so ideal for cleaning cluttered areas. Designed as an effective, efficient and comfortable solution to achieve professional floor cleaning but with limited costs of ownership.

Abila is the perfect choice for easy but reliable cleaning in medium-sized areas, including cluttered spaces in environments such as retail outlets, garages, gyms or healthcare environments in general. Designed to ensure the greatest user-friendliness in daily cleaning operations, Abila is suitable for maintenance cleaning on floors up to 1.600 sq.m.



KEY ELEMENTS

- Brush head with practical brush coupling/uncoupling system requiring no manual intervention for installation
- Intuitive driving and simple controls
- Handy lever to adjust solution
- Digital battery level indicator
- Compact dimensions for easy transport from one place to another
- Practical and maneuverable to make it suitable for working even in cluttered areas
- Great productivity and reduction in costs of ownership
- It's ready for use straight away in a few simple steps, making it suitable for even the least experienced operators
- The tanks are made of high density, shock- and acid-resistant polyethylene
- The recovery tank is removable so easy to clean
- Easy, quick maintenance at the end of a job

TECHNICAL DATA		Abila 17 B	Abila 20 B	Abila 50 E
Theoretical productivity	up to sqm/h	1470	1750	1750
Scrubbing width	mm	420	500	500
Brushes, quantity and type	-	1 - Disc	1 - Disc	1 - Disc
Brush Ø	mm	420	500	500
Pressure on the brush	Kg	20	20	20
Solution tank	l	33	33	33
Recovery tank	l	40	40	40
Supply/traction	V	24/semi aut.	230/semi aut.	230/semi aut.
Autonomy up to	h	2,5	2,5	-
Machine dimensions (Lxhxa)	mm	1085x960x455	1160x960x455	1226x960x455
Squeegee width	mm	660	755	755
GVW (Gross Vehicle Weight)	Kg	159	161	110
Sound pressure level	db	<65	<65	<65

L20 is the easy but reliable walk-behind floor scrubber that allows increased productivity and reduced cleaning costs. Characterized by compact dimensions, it's the ideal model to achieve professional cleaning results and reduced costs of ownership in supermarkets, commercial areas in general, schools, gyms, warehouses, workshops and garages.

Designed to ensure the greatest reliability and user-friendliness in daily operations, L20 is suitable for maintenance cleaning on floors up to 1.800 sq.m.



KEY ELEMENTS

- Intuitive driving and simple controls
- Compact dimensions for easy transport from one place to another
- Great productivity and reduction in costs of ownership
- Brush head made of aluminum to protect the scrubber dryer against corrosion
- Reinforced plastic squeegee for resistance to impact and corrosion
- Automatic squeegee uncoupling system to protect it against accidental impact
- Handy cleaning solution level indicator tube
- It's ready for use straight away in a few simple steps, making it suitable for even the least experienced operators
- Easy, quick maintenance at the end of a job
- Easy to move from one place to another thanks to the third rear wheel



TECHNICAL DATA		L20 E	L20 B
Theoretical productivity	up to sqm/h	1450	1450
Scrubbing width	mm	508	508
Brushes, quantity and type	-	1 - Disc	1 - Disc
Brush Ø	mm	508	508
Pressure on the brush	Kg	27,5	27,5
Solution tank	l	40	40
Recovery tank	l	40	40
Supply/traction	V	230/110/semi aut.	24/Semi aut.
Autonomy up to	h	-	3
Machine dimensions (Lxhxa)	mm	1125x995x525	1165x995x541
Squeegee width	mm	680	680
GVW (Gross Vehicle Weight)	Kg	98	152
Sound pressure level	db	68,8	68,8

Antea is a high performing, easy to use, walk-behind professional scrubbing machine. Ideal for the professional cleaning of floors in offices, hospitals, shops, public buildings, restaurants, hotels, sports centers, supermarkets and production facilities.

Robust, resistant and reliable, the professional floor scrubber Antea was designed to improve productivity and reduce the cost of cleaning operations. Antea's technical characteristics and functions make it a professional floor scrubber suitable for both maintenance and heavy duty cleaning of floors up to 2.200 sq.m.



KEY ELEMENTS

- Three different brush head types to get optimal results on any floor: with disc brush (E-B-BT), cylindrical brushes (BTS) or with orbital pad (BTO)
- The models with disc brush head are available both as a battery-powered version (Antea B and Antea BT) and electrical (Antea E)
- Intuitive driving and simple controls
- Compact dimensions
- Frame and squeegee attachment in die-cast aluminum to guarantee sturdiness and reliability over time
- 4 wheels to increase machine stability
- Quiet operation to meet the cleaning needs of several sectors
- On-board battery charger
- Brush adjustment without any tools
- Quick water filling
- Handy cleaning solution level indicator
- Full accessibility to components for easier maintenance
- Parts requiring daily maintenance distinguished by yellow color



TECHNICAL DATA		Antea 50 E	Antea 50 B	Antea 50 BT	Antea 50 BTS	Antea 50 BTO
Theoretical productivity	up to sqm/h	1250	1250	1780	1750	1780
Scrubbing width	mm	508	508	508	500	508
Brushes, quantity and type	-	1 - Disc	1 - Disc	1 - Disc	2 - Cylindrical	1 - Rectangular pad
Brush Ø	mm	508	508	508	Ø110x500	-
Pad	mm	-	-	-	-	355x508
Pressure on the brush	Kg	23	23	23	25	25
Solution tank	l	40	40	40	40	40
Recovery tank	l	60	60	60	60	60
Supply/traction	V	220/110/semi aut	24/semi aut.	24/aut.	24/aut.	24/aut.
Autonomy up to	h	-	4	3,5	3,5	3,5
Machine dimensions (Lxhxa)	mm	1177x992x591	1177x992x591	1177x992x591	1156x1009x612	1071x1009x591
Squeegee width	mm	700	700	700	700	700
GVW (Gross Vehicle Weight)	Kg	120	191	203	206	205
Sound pressure level	db	<70	<65,7	<65,7	<70	<70

Versa

Versa is a powerful, high-performance, walk-behind scrubbing machine designed to be easy to use as well. Reliable and efficient, it's the ideal solution for increasing productivity and reducing the cost of cleaning operations.

Equipped with the power needed to work even in difficult situations, Versa allows excellent cleaning results in environments like supermarkets, public buildings, hospitals, warehouses, car showrooms, workshops and production facilities. Its technical characteristics and functions make it a professional scrubber dryer suitable for maintenance and heavy duty cleaning of floors up to 3.200 sq.m.



KEY ELEMENTS

- Two different brush head types to get optimal results on any floor: with disc brushes (BT) or cylindrical brushes (BTS)
- Intuitive driving and simple controls
- Compact dimensions
- Full accessibility to components for easier maintenance
- Frame and squeegee attachment in die-cast aluminum to guarantee sturdiness and reliability over time
- 4 wheels to increase machine stability
- Self-leveling splash guards on the disc versions also adapt automatically to uneven floors to increase cleaning performance
- On-board battery charger
- Brush uncoupling without any tools
- Quick water filling
- Handy cleaning solution level indicator
- Parts requiring daily maintenance distinguished by yellow color



TECHNICAL DATA		Versa 55 BT	Versa 65 BT	Versa 65 BTS
Theoretical productivity	up to sqm/h	1960	2295	2300
Scrubbing width	mm	560	655	657
Brushes, quantity and type	-	2 - Disc	2 - Disc	2 - Cylindrical
Brush Ø	mm	290	340	Ø130x610
Pressure on the brush	Kg	25	30	30
Solution tank	l	62	62	62
Recovery tank	l	66	66	66
Supply/traction	V	24/aut.	24/aut.	24/aut.
Autonomy up to	h	3	3	3
Machine dimensions (LxHxA)	mm	1190x1050x620	1220x1050x695	1160x1050x735
Squeegee width	mm	800	800	800
GVW (Gross Vehicle Weight)	Kg	228	232	246
Sound pressure level	db	65,3	65,3	<70

Vega is a walk-behind floor scrubber that combines power and versatility in a single machine while remaining compact and easy to handle. Comac quality focuses on essentials with Vega: ease of use, robustness and functional design make the range perfect for work even in the most difficult and dirty conditions. That makes it a scrubber dryer suitable for any situation: from cleaning floors in the industrial or logistics sectors to healthcare facilities or large-scale retailing.

Vega's technical characteristics and functions make it a professional floor scrubber suitable for both maintenance and heavy duty cleaning of large floors, up to 4.500 sq.m.



KEY ELEMENTS

- Three different brush head types to get optimal results on any floor: with disc brush (Vega BT), cylindrical brushes (Vega BTS) or with orbital pad (Vega BTO)
- Intuitive driving and simple controls
- Full accessibility to components for easier maintenance
- Frame, squeegee attachment and brush head in die-cast aluminum to guarantee sturdiness and reliability over time
- Self-leveling splash guards on the disc versions also adapt automatically to uneven floors to increase cleaning performance
- Optional on-board battery charger for recharging quickly and easily
- Quick water filling
- Handy cleaning solution level indicator
- Parts requiring daily maintenance distinguished by yellow color



TECHNICAL DATA		Vega 65 BT	Vega 75 BT	Vega 85 BT	Vega 70 BTO	Vega 70 BTS
Theoretical productivity	up to sqm/h	2816	3289	3655	3053	2752
Scrubbing width	mm	655	765	850	710	640
Brushes, quantity and type	-	2 - Disc	2 - Disc	2 - Disc	1 - Rectangular pad	2 - Cylindrical
Brush Ø	mm	340	400	440	-	Ø180-615
Pad	mm	-	-	-	710x355	-
Pressure on the brush	Kg	40-53	40-53	40-53	40-45	40-53
Solution tank	l	75	75	75	75	75
Recovery tank	l	115	115	115	115	115
Supply/traction	V	24/out.	24/out.	24/out.	24/out.	24/out.
Autonomy up to	h	3,5	3	3	3	3
Machine dimensions (Lxhxa)	mm	1495x1055x785	1515x1055x885	1545x1055x985	1390x1055x885	1475x1055x885
Squeegee width	mm	785	885	985	885	885
GVW (Gross Vehicle Weight)	Kg	368	377	386	386	394
Sound pressure level	db	<70	<70	<70	<70	<70



Omnia is an extremely powerful and reliable walk-behind scrubber dryer that's ideal for heavy-duty cleaning. It features a sturdy design and structure, specifically so that it guarantees the highest quality and keeps the investment value high over time.

The strong mechanical structure and the high performance of its 36-Volt components can endure long cleaning sessions and work on demanding surfaces, as in industrial structures, workshops, logistics warehouses and production facilities. Suitable for maintenance and heavy duty cleaning of medium and large surfaces up to 6.500 sq.m.



KEY ELEMENTS

- Intuitive driving and ease of use thanks to the instrument panel which, through switches and warning lamps, gives clear and comprehensive information on the machine status
- The automatic version allows the electrical actuator that lifts up and lowers the brush head and squeegee to be driven easily
- Battery compartment located in the center of the machine, incorporated into the space for the tanks. The plastic materials around the batteries are unaffected by oxidizing vapors to avoid the unattractive and harmful formation of rust
- Full accessibility to components for easier maintenance
- Access to the batteries for all checks is made easier by simply rotating the detergent solution tank on the hinge
- Powerful brush and vacuum motors for improved drying
- High brush pressure for excellent cleaning results
- Brush head designed for heavy-duty tasks, with long-lasting oil-bath gearboxes
- Solution and recovery tanks made of rotational molding polyethylene to make them sturdy and resistant to impact and corrosion
- Anti-skid, non-marking wheels in order to leave no trace on the surface after the passage of the machine and for perfect traction even on a wet floor
- Oscillating squeegee unit to follow the machine movements in every situation for perfect drying
- Squeegee adjustment without any tool, possibility of varying both support wheel height and squeegee tilt



TECHNICAL DATA		Omnia 26 BT	Omnia 32 BT
Theoretical productivity	up to sqm/h	2640	3320
Scrubbing width	mm	660	830
Brushes, quantity and type	-	2 - Disc	2 - Disc
Brush Ø	mm	345	430
Pressure on the brush	Kg	80	80
Solution tank	l	75	105
Recovery tank	l	85	115
Supply/traction	V	36/aut.	36/aut.
Autonomy up to	h	4,5	4,5
Machine dimensions (Lxhxa)	mm	1600x1120x700	1650x1120x850
Squeegee width	mm	1015	1115
GVW (Gross Vehicle Weight)	Kg	600	630
Sound pressure level	db	<70	<70

Innova 55 is the ride-on scrubbing machine that multiplies productivity and halves times compared to walk-behind scrubbing machines. Comac has designed this model to be extremely convenient: for the same cost as a walk-behind, Innova 55 is more comfortable and faster.

Its ultra-compact dimensions give this scrubber dryer the necessary maneuverability to perform in small spaces, going very easily around obstacles to complete cleaning operations quickly, with considerable savings on cleaning costs. That's why Innova 55 is the best solution for cleaning floors in hospitals, nursing homes, schools, sports centers, supermarkets and offices.

Its technical characteristics and functions make it a professional scrubbing machine suitable for maintenance cleaning of floors up to 4.500 sq.m.



KEY ELEMENTS

- Intuitive driving and simple controls
- Steering wheel of automotive inspiration to make it extremely easy to use
- Light, smooth steering to improve maneuverability
- Lowered footboard and access from both sides for increased practicality
- Compact dimensions
- Full accessibility to components for easier maintenance
- Quiet operation <54 dB (A) in Eco Mode to meet the needs of sensitive environments such as nursing homes and hospitals
- Extremely productive thanks to the 5.5 km/h cleaning speed
- Automatic speed reduction when steering to increase operator safety
- On-board battery charger
- Quick water filling
- Parts requiring daily maintenance distinguished by yellow color



TECHNICAL DATA		Innova 55
Theoretical productivity	up to sqm/h	3080
Scrubbing width	mm	560
Brushes, quantity and type	-	1 - Disc
Brush Ø	mm	560
Pressure on the brush	Kg	15
Solution tank	l	65
Recovery tank	l	75
Supply/traction	V	24/out.
Autonomy up to	h	3
Machine dimensions (Lxhxa)	mm	1265x1030x600
Squeegee width	mm	705
GVW (Gross Vehicle Weight)	Kg	335
Sound pressure level	db	<63

innova

The Innova family is a range of extremely versatile and easy to use ride-on floor scrubbers. The compact dimensions and maneuverability of these scrubbing machines allow them to be used even in congested areas.

Innova has always been a family of well-known scrubbing machines appreciated for their reliability and performance in floor scrubbing and drying. The automatic versions of Innova come as standard with the Eco Mode device, which guarantees a low noise level, making them ideal for daily use even in sensitive areas. All these characteristics make them particularly suitable for working in environments like supermarkets, shopping centers, hospitals, nursing homes, airports and stations, but also inside industrial production sites and warehouses.

Innova floor scrubbers are suitable for maintenance cleaning of floors up to 6.000 sq.m.



KEY ELEMENTS

- Three different brush head types to get optimal results on any floor: with disc brush, cylindrical or with orbital pad
- Intuitive driving and simple controls
- Available in the manual version (Innova M) where the squeegee and the brush head are controlled by two independent levers for a very simple and immediate use and the automatic version equipped with a working program selector which allows to choose among cleaning programs
- Light, smooth steering to improve maneuverability
- Access from both sides for increased practicality
- Compact dimensions
- Low center of gravity for outstanding stability
- On-board battery charger upon request
- Parts requiring daily maintenance distinguished by yellow color
- FFS - Fast Filling System: system for filling the clean water tank, even letting the operator perform other activities while the tank quickly fills up. When the tank is full, the water flow stops automatically



TECHNICAL DATA		Innova 60 B	Innova 65 B	Innova 75 B	Innova 85 B	Innova 100 B	Innova 70 S	Innova 70 BTO
Theoretical productivity	up to sqm/h	3660	3900	4500	5100	6000	4100	4200
Scrubbing width	mm	610	650	750	850	1010	690	710
Brushes, quantity and type	-	1 - Disc	2 - Disc	2 - Disc	2 - Disc	2 - Disc	1 - Cylindrical	1 Rectan. pad
Brush Ø	mm	610	340	390	430	510	Ø210x700	-
Pad	mm	-	-	-	-	-	-	710x355
Pressure on the brush (min - max)	Kg	30	30-60	30-60	30-60	30	20	30-60
Solution tank	l	110	110	110	110	110	110	110
Recovery tank	l	125	125	125	125	125	125	125
Supply/traction	V	24/aut.	24/aut.	24/aut.	24/aut.	24/aut.	24/aut.	24/aut.
Autonomy up to	h	3,5	3	3	3	3	3	3
Machine dimensions (Lxhxa)	mm	1495x1320x680	1495x1320x680	1495x1320x770	1495x1320x855	1495x1320x1035	1495x1320x805	1495x1320x805
Squeegee width	mm	800	990	990	1105	1105	990	990
GVW (Gross Vehicle Weight)	Kg	420	420	420	420	436	440	440
Sound pressure level	db	<70	<70	<70	<70	<70	<70	<70

Innova Comfort is a ride-on floor scrubber that is both extremely comfortable and easy to use. The capacity of the tanks and the technical features of the Innova Comfort make it an excellent partner for maintenance cleaning; it is fast and effective, and can guarantee the utmost discretion during cleaning operations, thanks to the devices for noise reduction that are fitted as standard.

In consideration of the current scenario, and as part of its ongoing attention to the environment, Comac has given the Innova Comfort innovative technologies directed towards saving resources, reducing waste and limiting consumption.

Innova Comfort falls into the category of ride-on scrubbing machines and is therefore suitable for working in areas characterized by the passage of a high number of people such as the public sector, educational establishments, swimming pools, gyms and supermarkets, and all situations that require professional cleaning of floors up to 6.000 sq.m.



KEY ELEMENTS

- Intuitive driving and simple controls
- Light, smooth steering to improve maneuverability
- Access from both sides for increased practicality
- Reclined position of the steering wheel and the super comfortable seat with armrests ensure maximum comfort for the operator
- Front and rear LED headlights as standard to guarantee maximum visibility
- Mechanical service and parking brake
- The recovery tank opens automatically thanks to a gas spring
- Courtesy lights pack as standard to increase the visibility of the parts where the operator may be required to perform maintenance
- On-board battery charger upon request
- Parts requiring daily maintenance distinguished by yellow color
- FFS - Fast Filling System: system for filling the clean water tank, even letting the operator perform other activities while the tank quickly fills up. When the tank is full, the water flow stops automatically



TECHNICAL DATA		Innova Comfort 75 B	Innova Comfort 85 B
Theoretical productivity	up to sqm/h	4500	5100
Scrubbing width	mm	750	840
Brushes, quantity and type	-	2 - Disc	2 - Disc
Brush Ø	mm	390	430
Pressure on the brush (min - max)	Kg	30-60	30-60
Solution tank	l	120	120
Recovery tank	l	130	130
Supply/traction	V	24/aut.	24/aut.
Autonomy up to	h	3	3
Machine dimensions (Lxhxa)	mm	1570x1275x780	1570x1275x855
Squeegee width	mm	990	1105
GVW (Gross Vehicle Weight)	Kg	476	476
Sound pressure level	db	61,5	61,5

Optima

Optima is a ride-on floor scrubber with a robust design, suitable for working in different environments, both commercial and industrial, ensuring excellent performance, even for the deep cleaning of various hard floors such as warehouses, logistics centers or finer surfaces such as in shopping centers and supermarkets.

Comfort and complete control over the machine ensured by the operator position and easy controls, enhance the results during the operations. The big tanks capacity increases working autonomy while quiet operations allow to perform also in daytime without disturbing the people around: such features guarantee great efficiency and productivity.

Great performance: perfectly clean surfaces even in heavy duty cleaning on floors up to 10.000 sq.m.



KEY ELEMENTS

- Two different brush head types to get optimal results on any floor: with disc brushes or cylindrical brushes
- Intuitive driving and simple controls
- Access from both sides for increased practicality
- Reclined position of the steering wheel and the super comfortable seat with armrests ensure maximum comfort for the operator
- The recovery tank opens automatically thanks to a gas spring
- Courtesy lights pack as standard to increase the visibility of the parts where the operator may be required to perform maintenance
- Parts requiring daily maintenance distinguished by yellow color
- Front and rear bumper, available as optional equipment
- Hydraulic brake which acts on the rear wheels, thus increasing safety and comfort
- Electric brake installed on the front motorwheel that functions as an emergency brake or parking brake
- Ramp kit allowing increased front wheel grip, enhancing performance on ramps
- Dual Power Extreme vacuum kit to increase vacuum performance
- FFS - Fast Filling System: system for filling the clean water tank, even letting the operator perform other activities while the tank quickly fills up. When the tank is full, the water flow stops automatically



TECHNICAL DATA		Optima 85 B	Optima 100 B	Optima 90 BS
Theoretical productivity	up to sqm/h	6800	8080	6960
Scrubbing width	mm	850	1010	870
Brushes, quantity and type	-	2 - Disc	2 - Disc	2 - Cylindrical
Brush Ø	mm	430	520	Ø150x855 (ant.) Ø210x865 (post.)
Pressure on the brush	Kg	85	85	50
Solution tank	l	160	160	160
Recovery tank	l	140	140	140
Supply/traction	V	24/aut.	24/aut.	24/aut.
Autonomy up to	h	3	3	2,5
Machine dimensions (Lxhxa)	mm	1796x1245x900	1796x1245x1055	1796x1005x900
Squeegee width	mm	1120	1120	1120
GVW (Gross Vehicle Weight)	Kg	815	815	838
Sound pressure level	db	65,4	65,4	65,4





C85 is a ride-on industrial floor scrubber in Comac's C range. C85 is a scrubbing machine featuring the most innovative technology, characterized by robust design and an intelligent soul, giving the operator the ability to interact with the machine to make the most of its functions with a view to optimizing operation times and reducing costs.

Innovative technology also means excellent performance, great power and maximum safety, without giving up on user-friendliness, making C85 an extremely versatile scrubber dryer. The configurations, the options and the accessories available provide an extraordinary opportunity to configure the C85 with maximum flexibility, making it able to work in any environment and in the presence of any type of dirt, such as in production sites, warehouses, shopping centers, supermarkets and logistics centers.

Thanks to the perfect blend of productivity, performance and reliability, C85 is suitable for maintenance and heavy duty cleaning even in the case of very heavy dirt on medium and large floors up to 12.000 sq.m.



KEY ELEMENTS

- Two configurations available. The Essential configuration makes C85 a simpler, more essential industrial floor scrubber, indispensable for all cleaning operations which are primarily focused on excellent performance. C85 in the Bright configuration, meanwhile, is richer, capable of offering optimal performance combined with the maximum levels of existing technology for scrubbing machines in this category
- Two different brush head types to get optimal results on any floor: scrubbing or scrubbing-sweeping
- Intuitive driving and simple controls for both Essential and Bright configurations
- Working position raised and decentralized to improve visibility during cleaning operations
- The steering wheel, new generation drive pedal and seat with super comfortable armrests ensure maximum comfort for the operator even when the scrubbing machine is used for long periods
- Dual vacuum motor as standard in Bright configuration to ensure perfect drying in a single passage, with no marks or residue
- Front motorwheel in AC with antiskid and non-marking wheel to ensure maximum adherence on any type of floor, even when wet
- Steel frame coated with cataphoretic paint which provides it with remarkable resistance to corrosion
- The Bright configuration is equipped with a color touch screen display to make it even easier and more intuitive for the operator to use the scrubber dryer
- Continuous sensor positioned on the steering wheel axle that recognizes the exact position of the front motorwheel, automatically reducing the speed in accordance with requirements, so that C85 can also move forward in a fluid manner, without interruption
- Brush head made of steel, to provide robustness and reliability over time
- Solution level sensor in Bright configuration allows automatic awareness of the level of solution in the tank
- Courtesy lights pack upon request, to increase the visibility of the parts where the operator may be required to perform maintenance
- Parts requiring daily maintenance distinguished by yellow color
- Hydraulic brake which acts on the rear wheels, thus increasing safety and comfort
- Electric brake installed on the front motorwheel that functions as an emergency brake or parking brake
- C85 BS is equipped with scrubbing sweeping brush head: particularly suitable for scrubbing rough floors or with small solid debris. The side brush is available as an optional accessory
- FFS - Fast Filling System: system for filling the clean water tank, even letting the operator perform other activities while the tank quickly fills up. When the tank is full, the water flow stops automatically



TECHNICAL DATA		C85 B	C85 BS
Theoretical productivity	up to sqm/h	6800	6800
Scrubbing width	mm	850	850
Brushes, quantity and type	-	2 - Disc	2 - Cylindrical
Brush Ø	mm	430	Ø210x856
Pressure on the brush	Kg	150	50
Solution tank	l	180	180
Recovery tank	l	180	180
Supply/traction	V	36/aut.	36/aut.
Autonomy up to	h	4	4
Machine dimensions (Lxhxa)	mm	1917x1630x961	1920x1630x960
Squeegee width	mm	1105	1105
GVW (Gross Vehicle Weight)	Kg	1145	1190
Sound pressure level	db	<70	<70

C100 is a high-tech, robust ride-on floor scrubber in Comac's industrial C range. Characterized by a new design and an intelligent soul, C100 is a scrubbing machine featuring the most innovative technology, giving the operator the ability to interact with the machine to make the most of its functions with a view to optimizing operation times and reducing costs.

Innovative technology also means excellent performance, great power and maximum safety, without giving up on user-friendliness, making C100 an extremely versatile scrubbing machine. The configurations, the options and the accessories available provide an extraordinary opportunity to configure the C100 with maximum flexibility, making it able to work in any environment and in the presence of any type of dirt, such as in production sites, warehouses, shopping centers, supermarkets and logistics centers.

Thanks to the perfect blend of productivity, performance and reliability, C100 is suitable for maintenance and heavy duty cleaning even in the case of very heavy dirt on medium and large floors up to 16.000 sq.m.



KEY ELEMENTS

- Two configurations available. The Essential configuration makes C100 a simpler, more essential machine, indispensable for all cleaning operations which are primarily focused on excellent performance. C100 in the Bright configuration, meanwhile, is richer, capable of offering optimal performance combined with the maximum levels of existing technology for scrubbing machines in this category
- Two different brush head types to get optimal results on any floor: scrubbing or scrubbing-sweeping
- Intuitive driving and simple controls for both Essential and Bright configurations
- Working position raised and decentralized to improve visibility during cleaning operations
- The steering wheel, new generation drive pedal and seat with super comfortable armrests ensure maximum comfort for the operator even when the scrubbing machine is used for long periods
- Dual vacuum motor as standard in Bright configuration to ensure perfect drying in a single passage, with no marks or residue
- Front motorwheel in AC with antiskid and non-marking wheel to ensure maximum adherence on any type of floor, even when wet
- Steel frame coated with cataphoretic paint which provides it with remarkable resistance to corrosion
- The Bright configuration is equipped with a color touch screen display to make it even easier and more intuitive for the operator to use the scrubber dryer
- Continuous sensor positioned on the steering wheel axle that recognizes the exact position of the front motorwheel, automatically reducing the speed in accordance with requirements, so that C100 can also move forward in a fluid manner, without interruption
- Brush head made of steel, to provide robustness and reliability over time
- Solution level sensor in Bright configuration allows automatic awareness of the level of solution in the tank
- Courtesy lights pack upon request, to increase the visibility of the parts where the operator may be required to perform maintenance
- Parts requiring daily maintenance distinguished by yellow color
- Hydraulic brake which acts on the rear wheels, thus increasing safety and comfort
- Electric brake installed on the front motorwheel that functions as an emergency brake or parking brake
- C100 BS is equipped with scrubbing sweeping brush head: particularly suitable for scrubbing rough floors or with small solid debris. The side brush is available as an optional accessory
- FFS - Fast Filling System: system for filling the clean water tank, even letting the operator perform other activities while the tank quickly fills up. When the tank is full, the water flow stops automatically



TECHNICAL DATA		C100 B	C100 BS
Theoretical productivity	up to sqm/h	8000	8000
Scrubbing width	mm	1000	1000
Brushes, quantity and type	-	2 - Disc	2 - Cylindrical
Brush Ø	mm	510	Ø210x1006
Pressure on the brush	Kg	150	60
Solution tank	l	230	230
Recovery tank	l	240	240
Supply/traction	V	36/out.	36/out.
Autonomy up to	h	4	4
Machine dimensions (Lxhxa)	mm	1917x1730x1095	1917x1730x1095
Squeegee width	mm	1305	1305
GVW (Gross Vehicle Weight)	Kg	1216	1366
Sound pressure level	db	<70	<70



The C120 ride-on industrial scrubbing machine is fitted with the most innovative technology and has a design that makes it extremely comfortable as well. Built around the needs of the user, the C120 is a floor scrubber that guarantees excellent performance in daily floor cleaning.

On the Comac C120 scrubbing machine, the unmistakable style of the C range reaches a new level of evolution to better deal with every cleaning job in the logistics and industrial context and in large car parks. But it's designed to work with light dirt too, for example in large-scale retailing areas, shopping centers, stations and airports.

The C120 is synonymous with evolution and uniqueness when it comes to the new sweeping-scrubbing system as well: it consists of a pre-sweeping unit and a scrubbing unit. This makes it an industrial floor scrubber perfectly equipped to guarantee optimum performance whatever the cleaning task - whether maintenance or heavy duty - and even involving small solid residue, in medium and large areas up to 20.000 sq.m.



KEY ELEMENTS

- Two configurations available. The Essential configuration makes C120 a simpler, more essential machine, indispensable for all cleaning operations which are primarily focused on excellent performance. Bright, meanwhile, is a richer configuration, capable of offering optimal performance combined with the maximum levels of existing technology for scrubbing machines in this category
- Two engine types: the battery-powered version for working with zero emissions in indoor areas, or the Bi-Fuel version with dual petrol and LPG supply to extend the level of autonomy so you can work in large outdoor spaces as well
- New sweeping-scrubbing system consisting of a pre-sweeping unit with two side brushes and two cylindrical brushes, followed by a scrubbing unit with three disc brushes to guarantee optimum performance whatever the cleaning task, even involving small solid residue
- User-friendly driving and simple controls for both Essential and Bright configurations
- Working position raised and decentralised to improve visibility during cleaning operations
- The steering wheel, new generation drive pedal and super comfortable seat with armrests and headrest, ensure maximum comfort for the operator even when the scrubbing machine is used for long periods
- Dual vacuum motor as standard, to ensure perfect drying in a single passage, with no marks or residue
- Front motorwheel in AC with antiskid and non-marking wheel to ensure maximum adherence on any type of floor, even when wet
- Steel frame coated with cathoretic paint which provides it with remarkable resistance to corrosion
- Continuous sensor positioned on the steering wheel axle that recognizes the exact position of the front motorwheel, automatically reducing the speed in accordance with requirements, so that C120 can also move forward in a fluid manner, without interruption
- Brush head made of steel, to provide robustness and reliability over time
- Solution level sensor in Bright configuration allows automatic awareness of the level of solution in the tank
- Courtesy lights pack upon request, to increase the visibility of the parts where the operator may be required to perform maintenance
- Parts requiring daily maintenance distinguished by yellow colour
- Hydraulic brake which acts on the rear wheels, thus increasing safety and comfort
- Electric brake installed on the front motorwheel to act as a parking brake



TECHNICAL DATA		C120 B	C120 BIFUEL
Theoretical productivity	up to sqm/h	14300	14300
Scrubbing width	mm	1230	1230
Working width with two side brushes	mm	1430	1430
Brushes, quantity and type	-	2 Side + 2 Cylindrical + 3 Disc	2 Side + 2 Cylindrical + 3 Disc
Brush Ø	mm	430 + Ø160x898	430 + Ø160x898
Pressure on the brush (min - max)	Kg	150	150
Solution tank (solution - recovery)	l	320	320
Debris hopper volume	l	10	10
Supply/traction	V	36/aut.	Bifuel LPG - 36/aut.
Autonomy up to	h	6	/
Machine dimensions (l x h x w)	mm	2420x1310x1830	2420x1310x1830
Squeegee width	mm	1295	1295
GVW (Gross Vehicle Weight)	Kg	1918	1376
Sound pressure level	db	<70	87



C130

C130 is a powerful ride-on industrial floor scrubber, designed for cleaning large spaces in environments such as airports, railway stations, car parks, logistics centers and warehouses, as well as in industrial structures and shopping centers.

C130 scrubs and sweeps at the same time, offering superb performance in a single passage: a single machine for deep scrubbing and to collect small debris. The functional design of the structure and its sturdy materials also ensure reliability over time. All of the power of the C130 is concentrated in a 7" color touch screen display, making it easy and intuitive to use, allowing the operator to interact with the machine and select the working programs according to requirements.

Thanks to the perfect blend of productivity, performance and reliability, C130 is suitable for maintenance and heavy duty cleaning even in the case of very heavy dirt on medium and large floors up to 25.000 sq.m.



KEY ELEMENTS

- Brush head equipped with 4 disc brushes and a cylindrical central brush for superb performance in all situations
- The cylindrical central brush is self-adjusting and as such, it remains in constant contact with the floor regardless of the type of surface or degree of bristle wear
- Three different motorizations: battery-powered, Diesel or Bi-Fuel.
- C130 BS for zero-emissions operations, even inside, for up to 5 hours
- C130 Diesel for unlimited autonomy
- C130 Bi-Fuel with dual power for extended autonomy and reduced environmental impact
- C130 BS is also available as a type-approved street version
- Ergonomic seat with adjustable armrests and steering wheel to ensure adequate back support, enabling operators to work more hours without fatigue
- Driving position completely encircled by the machine body, in order to protect the operator
- The desired cleaning program is selected thanks to the touch screen display: ECO, STANDARD and PLUS. Each program uses a certain amount of water, detergent and pressure so you can choose the right one for the specific cleaning conditions.
- Dual vacuum motor to ensure perfect drying in a single passage, with no marks or residue
- Cleaning result perfectly uniform thanks to the splashguards positioned along the sides of the machine, which ensure that the water is always dispensed internally in the v-shape of the squeegee and is then channelled towards the center, facilitating the vacuum process
- Adjustable brush pressure up to 180 Kg
- Powerful antiskid and non-marking motorwheel ensures optimal adherence on any type of flooring
- High density polyethylene tanks to guarantee reliability over time
- Side bumper rollers to protect the machine and the surrounding environment
- Brush motors equipped with a control device which automatically regulates pressure, according to the type of floor being cleaned
- Hydraulic drum brakes to ensure optimal braking performance in all working conditions
- Batteries with automatic refill function for C130 BS



TECHNICAL DATA		C130 BS	C130 D	C130 Bifuel
Theoretical productivity	up to sqm/h	7800	7800	7800
Scrubbing width	mm	1300	1300	1300
Brushes, quantity and type	-	4-Disc + 1-Cylindrical	4-Disc + 1-Cylindrical	4-Disc + 1-Cylindrical
Brush Ø	mm	343 + Ø300x1106	343 + Ø300x1106	343 + Ø300x1106
Pressure on the brush (min - max)	Kg	130-180	130-180	130-180
Solution tank	l	300	300	300
Recovery tank	l	360	360	360
Supply/traction	V	36/aut.	Diesel 36/aut.	Bifuel LPG - 36/aut.
Autonomy up to	h	5	-	-
Machine dimensions (Lxhxa)	mm	2355x1807x1486	2355x1807x1486	2355x1807x1486
Squeegee width	mm	1493	1493	1493
GVW (Gross Vehicle Weight)	Kg	2145	1700	1695
Sound pressure level	db	<70	<70	<70



autonomous



Comac cobots are autonomous floor cleaning machines whose quality is guaranteed by the experience gained in 50 years of design together with the implementation of the most advanced technologies in the sector.

Cobot floor scrubber

Comac floor scrubber cobots are able to combine performance and productivity to deliver superior cleaning results. They are autonomous and collaborative scrubber robots designed to work in complete autonomy and safety with minimal supervision from the team dedicated to the maintenance of the environments.



SELF.Y is a floor scrubber cobot designed to be a collaborative and intelligent cleaning companion capable of combining performance and productivity to take professional cleaning to the next level.

Designed to adapt to any environment where it is used, SELF.Y is an autonomous floor scrubber perfect for offering professional cleaning in airports, shopping centres, supermarkets, schools, office buildings, conference centres, healthcare facilities, warehouses and distribution centres.

With a productivity estimated at 1700 sqm/h, if there is a large and spacious surface to clean, SELF.Y is the robotic floor scrubber that allows you to optimise the processes and workflows of the people dedicated to the maintenance of the environments, giving them more time to dedicate to other activities.



KEY ELEMENTS

- Two modes of work: autonomous, with Learn & Repeat or Perimeter functions, or manual to use SELF.Y as a normal floor scrubber
- In addition to being compact, SELF.Y is incredibly agile and extremely graceful in its movements, to best adapt to the environment around it
- It can work in complete autonomy and safety to offer maximum cleaning performance with minimal supervision
- Simple to configure, no programming skills are needed because SELF.Y is also designed for less experienced users
- Intrinsically safe because it is a floor scrubber cobot designed for an extremely peaceful collaboration between man and machine
- Detailed mapping with the autonomous creation of the map of the environment for the optimisation of the cleaning path
- Immediately ready to automate cleaning processes without having to wait for the intervention of a specialised technician to start it
- It adapts in real time to the environment, changes in route, obstacles or people who may be on its cleaning path
- Equipped with a touch screen display with colour screen to make the use of the floor scrubber cobot by the operator even more simple and intuitive
- It does not need Wi-Fi connection to work, so you can use it anywhere, even in basements
- 3D cameras to prevent obstacles
- LiDAR sensor to accurately map the environment and increase safety
- Ultrasonic sensors to detect obstacles, even transparent ones such as glass and plexiglass
- Cliff Sensors to avoid accidental falls caused by unevenness
- Elements involved in daily maintenance distinguished by the yellow colour



TECHNICAL DATA		SELF.Y
Theoretical productivity	up to sqm/h	1710
Scrubbing width	mm	570
Brushes, quantity and type	-	3 - Disc
Brush Ø	mm	194
Pressure on the brush (min - max)	Kg	15
Solution tank	l	40
Recovery tank	l	40
Supply/traction	V	24/aut.
Autonomy up to	h	4
Machine dimensions (L x h x l)	mm	735x1100x680
Squeegee width	mm	630
GVW (Gross Vehicle Weight)	Kg	240
Sound pressure level (ISO 11201)	dB (A)	<70

COMAC

#comac4water is the Comac project that is focused on finding the best solutions for recycling water

Water is a precious resource, above all if we consider that the amount of fresh water available to the inhabitants of the planet is constantly decreasing. It is a substance that is used in large quantities, even during the easiest cleaning operations. Comac has always been sensitive to this theme, and for this reason, has sought to respond to the issue of safeguarding water resources with solutions that conserve it.

Recycling water is the solution that the company believes in, and this is the starting point for the development of the **#comac4water** concept.

Why is it important to recycle water? Because it allows us to conserve a resource that is extremely important, both for humankind and for the planet. Recycling and reusing water does not simply mean reducing the environmental impact of cleaning operations, but also lowering the costs associated with these.

On-Board **recycling system**

The Comac solutions for recycling and reusing the water used during floor cleaning operations include the Non Stop Cleaning system. This is a recycling system installed directly on board Comac floor scrubbers that allows the machine to work by reusing the water used for scrubbing.

This is an extremely innovative yet practical solution, which provides a great advantage in economic terms and minimizes the environmental impact of cleaning operations.



C85 NSC

E4 water

External **recycling system**

Comac has also conceived an external purification system that can clean the water used during cleaning operations. In this way, even those who already own one or more floor scrubbers can recycle the scrubbing water, reducing costs and above all the use of resources.



InAqua

C85 Non Stop Cleaning is a battery-powered ride-on floor scrubber that's extremely innovative and eco-friendly because it has an on-board filtering system that allows water used for scrubbing floors to be recycled.

C85 NSC falls within the #comac4water concept because the scrubbing water can be reused for five days*, reducing the consumption. It also allows the operator to avoid the effort of having to empty and refill the tanks of the scrubbing machine several times. The system on the C85 NSC allows the water to be reused in three phases: in the first, the water is used normally and collected by vacuum; in the second phase, the water is filtered and purified, thus completing the water recycling phase. In the third phase, the water is therefore available for reuse. To meet demand for the most specific cleaning requirements, the C85 NSC PREMIUM version has an advanced filter stage that can obtain water with even greater purification and so allow operation with clear water.

*with estimated use of 3 hours a day



KEY ELEMENTS

- Reduction in the environmental impact connected to floor cleaning operations
- Two Basic and Premium versions. The latter features membrane filters for an additional filtration stage that can obtain water with even greater purification so that the machine operates with clear water
- Reduction in consumption of water, which with C85 NSC can be reused for a week (with estimated use of 3 hours a day)
- Reduction in unproductive times when the operator has to continually empty and refill the tanks of the scrubber dryer
- Reduction in costs connected to the use of clean water
- Reduction in costs connected to managing waste water from cleaning floors
- Reduction in the use of the chemical product for scrubbing floors
- Two different brush head types to get optimal results on any floor: scrubbing or scrubbing-sweeping
- Intuitive driving and simple controls
- Working position raised and decentralized to improve visibility during cleaning operations
- The steering wheel, new generation drive pedal and seat with super comfortable armrests ensure maximum comfort for the operator even when the scrubbing machine is used for long periods
- Front motorwheel in AC with antiskid and non-marking wheel to ensure maximum adherence on any type of floor, even when wet
- Steel frame coated with cataphoretic paint which provides it with remarkable resistance to corrosion
- Continuous sensor positioned on the steering wheel axle that recognizes the exact position of the front motorwheel, automatically reducing the speed in accordance with requirements, so that C85 NSC can also move forward in a fluid manner, without interruption
- Brush head made of steel, to provide robustness and reliability over time
- Courtesy lights pack to increase the visibility of the parts where the operator may be required to perform maintenance
- Parts requiring daily maintenance distinguished by yellow color
- Hydraulic brake which acts on the rear wheels, thus increasing safety and comfort
- Electric brake installed on the front motorwheel that functions as an emergency brake or parking brake
- C85 B NSC is available in a scrubbing version with 2 disc brushes with 85 cm working width
- C85 BS NSC is equipped with scrubbing sweeping brush head: particularly suitable for scrubbing rough floors or with small solid debris. The side brush is available as an optional accessory



TECHNICAL DATA		C85 B NSC	C85 BS NSC
Theoretical productivity	up to sqm/h	6800	5726
Scrubbing width	mm	850	850
Brushes, quantity and type	-	2 - Disc	2 - Cylindrical
Brush Ø	mm	430	Ø210x856
Pressure on the brush	Kg	150	50
Solution tank	l	300	300
Supply/traction	V	36/aut.	36/aut.
Autonomy up to	h	4	4
Machine dimensions (LxHxA)	mm	1917x1630x961	1920x1630x960
Squeegee width	mm	1105	1105
Sound pressure level	db	<70	<70

InAqua is an external purification system that can filter and clean the dirty water used for scrubbing floors. InAqua means that the dirty water from normal floor cleaning operations can be cleaned and reused.

InAqua is very easy to use, also called "water washing machine" because it operates in a very similar way to a domestic washing machine. InAqua can clean up to 150 liters of water in just 30 minutes.

This system allows dirty water to be loaded directly from any floor scrubber. InAqua can aggregate and divide dirt, thus supplying clean water at the outlet and depositing dirt in special bag filters.

InAqua makes it possible to reuse scrubbing water from any scrubbing machine and, if necessary, also waste water from manual cleaning systems. This means that Comac can offer a solution capable of reducing the use of water, saving money and making cleaning operations more environmentally friendly.



KEY ELEMENTS

- Independent scrubbing water recycling system
- Reduction in the environmental impact connected to floor cleaning operations
- Reduction in water consumption, which thanks to InAqua can be reused several times
- Reduction in costs connected to the use of clean water
- Reduction in costs connected to managing waste water from cleaning floors
- Easy, quick installation, only requiring a connection to the power socket
- InAqua allows water to be loaded directly from the floor scrubber, minimizing the possibility of contact with the operator
- Equipped with castor wheels that allow it to be moved easily



TECHNICAL DATA		InAqua
Maximum load	l/cycle	150
Machine dimensions (LxHxA)	mm	1375(+485) x 1000x1020
Energy consumption	kW/h	0,3
Power supply	V	230V/50Hz
Length of cycle	min	40
Net weight	Kg	<200

combined



Comac **combination machines** are the perfect solution for those looking for performance, efficiency, and versatility in floor cleaning. These **sweeper-scrubbers** combine sweeping and scrubbing systems in a single machine, reducing cleaning time while enhancing results.

Combined sweeper-scrubber

Ideal for maintaining large industrial areas, commercial spaces and logistics hubs, Comac **combined sweeper-scrubber** machines ensure a thorough clean in just one pass, optimizing both efficiency and resource consumption. Designed for intensive use, these **sweeper-scrubbers** deliver high productivity, reliability, and exceptional performance with minimal effort, making large-scale cleaning operations faster, easier, and more cost-effective.



Combimac is the industrial combination sweeper-scrubber that sweeps, scrubs, and dries floors in a single pass. This high-performance industrial floor cleaning machine integrates a sweeper and a floor scrubber into one system, making it the perfect solution for fast, efficient, and thorough cleaning of large surfaces. Designed to clean areas from 20,000 to 60,000 sqm, Combimac helps reduce cleaning time and maximize productivity while consistently delivering outstanding results.

Combimac's sweeping unit features two side brushes and two counter-rotating cylindrical brushes, allowing the machine to remove all types of debris: from fine dust to bulky or heavy waste such as cans, leaves, wood fragments, stones, and even fruit. The scrubbing base is equipped with four disc brushes and a powerful vacuum system that ensures effective detergent distribution and suction, leaving floors perfectly clean and dry after each pass.

This combination machine is ideal for industrial cleaning in environments such as factories, warehouses, logistics hubs, transportation facilities, and produce markets. It's also suitable for lighter dirt typically found in supermarkets, exhibition halls, parking areas, and large public venues. Engineered for heavy-duty applications, Combimac is the combined sweeper-scrubber that ensures high productivity and excellent results with minimal effort, making large-scale cleaning operations faster and more cost-effective.



KEY ELEMENTS

- Combination floor cleaning machine equipped with a separate double-action system consisting of a sweeper system and a floor scrubber base
- Sweeping system made up of two side brushes that convey dirt and debris to the center of the machine, where they are collected by two cylindrical brushes
- The configuration of the sweeping system with two counter-rotating cylindrical brushes eliminates the need for a front flap-lifting mechanism, allowing Combimac to easily and automatically collect all types of debris: dust, bulky and light items like cans, bottles, or leaves, as well as heavier materials such as stones, wood fragments, or fruit
- The dirt collected by the sweeping system is channeled into a large debris hopper, which can be lifted by hydraulic pistons for easy emptying, making this operation quick and effortless
- The sweeping system is equipped with a standard pocket filter to effectively trap fine dust; also available with cartridge filter for more specific filtration needs
- Scrubbing system consisting of four disc brushes that distribute and channel the detergent solution toward the squeegee and suction system
- Dual vacuum motor as standard to ensure perfect drying in a single passage, with no marks or residue
- Powerful wheel motor and rear-wheel drive enable Combimac to easily handle ramps, overcoming inclines of up to 20%
- AC wheel motor with antiskid and non-marking wheel to ensure maximum adherence on any type of floor, even when wet
- The wheel motor is positioned between the sweeping and scrubbing systems, allowing Combimac to always work on a swept and dry floor
- Continuous sensor positioned on the steering wheel axle that recognizes the exact position of the wheel motor, automatically reducing the speed in accordance with requirements, so that Combimac can also move forward in a fluid manner, without interruption
- Power steering as standard for smoother and effortless driving, even when maneuvering in tight spaces
- Hydraulic brake which acts on the rear wheels, thus increasing safety and comfort
- Electric brake installed on the wheel motor acts as a parking brake
- Full electric power: by using only the battery's electrical energy, Combimac allows you to clean without fuel and without generating emissions.
- Up to 6 hours of autonomy thanks to optimized energy efficiency
- Maximum freedom of use, even in closed or sensitive environments such as warehouses and production areas
- The option to install a lithium-ion battery drastically reduces charging times and enhances Combimac's performance
- User-friendly driving and simple controls
- Raised and offset driving position, with a shorter front end compared to market standards, ensuring maximum visibility in all directions for the operator
- The steering wheel, new generation drive pedal and super comfortable seat with armrests and headrest, ensure maximum comfort for the operator even when the combination sweeper-scrubber is used for long periods
- The rear anti-collision sensor is supplied as standard to further enhance operational safety
- Courtesy lights pack to increase the visibility of the parts where the operator may be required to perform maintenance
- Steel frame coated with cataphoretic paint which provides it with remarkable resistance to corrosion
- Brush head made of steel, to provide robustness and reliability over time
- Parts requiring daily maintenance distinguished by yellow colour
- Solution level sensor upon request that allows automatic awareness of the level of solution in the tank
- FFS - Fast Filling System: system for filling the clean water tank, even letting the operator perform other activities while the tank quickly fills up. When the tank is full, the water flow stops automatically



TECHNICAL DATA		COMBIMAC	COMBIMAC 130 REWATER
Sweeping estimated productivity	up to sqm/h	15840	15840
Drying width	mm	1510	1510
Brushes quantity and type	-	4 - Disc / 2 Cylindrical / 2 Front	4 - Disc / 2 Cylindrical / 2 Front
Brushes Ø	mm	355 + Ø410 x 1180 Ø220 x 1080 + 550	355 + Ø410 x 1180 Ø220 x 1080 + 550
Brush pressure	up to Kg	150	150
Solution tank	l	300	300
Recovery tank	l	300	300
Supply	-	(Battery) Box-36/735	(Battery) Box-36/735
Minimum autonomy	h	3,5	3,5
Theoretical autonomy	h	6	6
Machine dimensions (l x h x w)	mm	3000x1760x2250	3000x1760x2250
Machine weight (with batteries)	mm	2370	2370
Machine weight	Kg	1590	1590
Sound pressure level (ISO 11201)	dB (A)	<70	<70

SWEEPERS



Comac produces a complete range of professional walk-behind and ride-on sweepers. Comac sweepers are recommended for sweeping floors of all types, both in indoor and outdoor environments. Designed to be used also in a prolonged and intensive manner, the Comac industrial sweepers are able to withstand demanding working conditions, and guarantee a high level of productivity.

Walk-behind sweepers

The Comac walk-behind sweepers have been designed for the daily cleaning of small and medium sized surfaces, both internal and external. Compact and easy to handle, these professional sweepers are also extremely easy to use.



CS50



CS500

Ride-on sweepers

The Comac ride-on sweepers are suitable for the cleaning of medium and large sized surfaces, both internal and external. Robust and resistant, these sweepers are designed to guarantee high levels of performance, including on floors that require heavy duty cleaning such as those in industrial environments.



CS60



CS700-CS800



CS80-90-110



CS100-120



Street sweepers

The street sweepers from the Comac Street Line guarantee high performance, with a particular focus on the environment thanks to the exclusive Twin Action system with which they are equipped, which enables them to work without using water. Powerful, versatile and easy to use, the Comac street sweepers are the ideal solution for cleaning urban or industrial areas.



HP4000



HP6000

CS50 is the little walk-behind sweeper that's extremely compact and easy to handle. Great performance and user-friendliness are the main characteristics of this sweeper that allows cleaning operations to be sped up considerably, also simplifying the job for the operator.

Suitable for cleaning both inside and outside floors measuring up to 2500 sq.m., Comac CS50 is the ideal solution for sweeping paths, garages, car parks or warehouses in the logistics, public, health, handicraft or automotive sector.

The CS50 walk-behind sweeper is available in a version with Honda gasoline engine (CS50 H/HT).



KEY ELEMENTS

- Gasoline-powered
- Compact, practical and robust
- Intuitive driving and simple controls
- The panel filter, with its large filtering surface, retains dust particles very effectively
- Consumption savings and greater safety, as the brush only rotates when the machine is working
- Great reliability of the drive unit, thanks to the use of trapezoidal belts
- Front and side flaps to avoid raising dust during operation
- Handlebar grip, made of comfortable plastic material, makes operation of control levers extremely easy
- Cleaning corners and along walls easier thanks to side brush
- Side brush can be stopped and raised on extremely dusty floors to avoid kicking up dust
- Extremely versatile, depending on the type of brush chosen for working on different types of floor
- Mixed steel brush: for outdoor use or on extremely rough surfaces
- Brush with tampico bassine bristles: for fine dusts and glossy surfaces
- Brush with PPL bristles: extremely versatile for industrial surfaces
- Panel filter can be easily replaced with no need for tools
- Manual filter shaker: reliable, practical and affordable



TECHNICAL DATA		CS50 H	CS50 HT
Theoretical productivity	up to sqm/h	2275	2600
Working width with central brush	mm	500	500
Working width with side brush	mm	650	650
Central brush	Ø/mm	265x500	265x500
Side brush	mm	380	380
Standard filter	format	Panel	Panel
Standard filter	material	Paper	Paper
Filtering surface	sq.m.	2,5	2,5
Debris hopper capacity	l	40	40
Type of drainage	-	Manual	Manual
Supply/traction	V	Gasoline/semi aut.	Gasoline/aut.
Machine dimensions (Lxhxa)	mm	1430x1000x660	1430x1000x660

CS500 is a small walk-behind sweeping machine; it is practical and compact yet powerful and precise when cleaning surfaces. This small battery-powered sweeper simplifies cleaning operations, courtesy of its excellent performance levels which enable the productivity of those who use it to be increased.

Suitable for cleaning both indoor and outdoor surfaces measuring up to 2600 sq.m, Comac CS500 is the perfect sweeping machine for sweeping garages, car parks, paths, walkways or pavements. However, this small sweeping machine is also ideal for cleaning warehouses, motorway service areas, car washes and spaces dedicated to the logistics, public, artisan production or automotive sectors.

The CS500 battery-powered sweeping machine is available in versions with or without traction, and can also be equipped with lithium batteries.



KEY ELEMENTS

- Battery powered for maximum freedom of movement and excellent performance
- Compact, practical and robust
- Intuitive driving and simple controls
- Frame and all components completely protected inside the external body, to avoid damage due to accidental impacts
- The panel filter, with its large filtering surface, retains dust particles very effectively
- Great reliability of the drive unit, thanks to the use of trapezoidal belts
- Flaps to prevent stirring up dust during operation
- Handlebars adjustable to 3 positions for maximum user comfort
- Cleaning corners and along walls is easier thanks to side brush
- Side brush can be stopped and raised on extremely dusty floors to avoid kicking up dust
- Extremely versatile, depending on the type of brush chosen for working on different types of floor
- Mixed steel brush: for outdoor use or on extremely rough surfaces
- Natural fibre brush with tampico bassine bristles: for fine dusts and glossy surfaces
- Brush with PPL bristles: extremely versatile for industrial surfaces
- Panel filter can be easily replaced with no need for tools
- Manual filter shaker: reliable, practical and affordable
- 50 liter debris hopper, very easy to remove and empty, with zero effort



TECHNICAL DATA		CS500B	CS500BT
Theoretical productivity	up to sqm/h	2275	2600
Working width with central brush	mm	500	500
Working width with side brush	mm	650	650
Central brush	Ø/mm	260x500	260x500
Side brush	mm	380	380
Standard filter	format	Panel	Panel
Standard filter	material	Paper	Paper
Filtering surface	sq.m.	3,3	3,3
Debris hopper capacity	l	50	50
Type of drainage	-	Manual	Manual
Supply/traction	V	Battery 12V/semi aut.	Battery 12V/aut.
Machine dimensions (Lxhxa)	mm	1265x900x660	1265x900x660

CS60 is a ride-on sweeper that's extremely compact and versatile, designed to meet different cleaning needs. It's a sweeper able to offer great productivity while staying eco-friendly and reducing consumption, thanks to the Hybrid version.

CS60 is available in two versions: battery-powered CS60 B, suitable for cleaning floors up to 8.000 sq.m., and CS60 Hybrid powered by a combination of gasoline engine with battery to double the working autonomy and cover up to 15000 sq.m.

Characterized by limited dimensions and great maneuverability, CS60 is particularly suitable for the outside and inside floors of industrial environments, warehouses and car parks and in the HoReCa, public, logistics and handicraft sectors.



KEY ELEMENTS

- Two types of power supply: battery-powered or hybrid to meet different cleaning requirements
- Compact, maneuverable and easy to handle
- Intuitive driving and simple controls
- Maximum comfort and safety for the operator
- Full visibility of the working and maneuvering area
- Steering wheel with integrated controls, that makes the activation of machine functions more intuitive, without distractions
- Frame and all components completely protected inside the external body, to avoid damages due to accidental impacts
- CS60 Hybrid operates up to 7.5 hours non-stop
- CS60 B is particularly recommended for working in indoor environments, also carpet floors as in hotels and convention centers
- Lowered footboard and access from both sides make CS60 extremely comfortable
- Safety brake to immediately stop the machine when the pedal is released
- Panel filter: for standard applications, easily replaced with no need for tools
- Fabric filter: for excellent filtering results also in environments with presence of very fine dust
- 65 liters debris hopper very easy to remove and empty, with no efforts
- Central brush can be taken off without any tools
- Available with one or two side brushes



TECHNICAL DATA		CS60	CS60 Hybrid
Theoretical productivity	up to sqm/h	5100	5100
Working width with central brush	mm	600	600
Working width with side brush	mm	800	800
Working width with two side brushes	mm	1000	1000
Central brush	Ø/mm	265x580	265x580
Side brush	mm	400	400
Standard filter	format	Panel	Panel
Standard filter	material	Paper	Paper
Filtering surface	sq.m.	3,2	3,2
Debris hopper capacity	l	65	65
Type of drainage	-	Manual	Manual
Supply/traction	V	Battery 24V/ aut.	Gasoline + battery 24V/aut.
Machine dimensions (LxHxa)	mm	1455x1030x845	1455x1030x845



CS700 CS800

CS700 and CS800 is a range of industrial ride-on sweepers devised to offer maximum user-friendliness and great comfort for the operator. Extremely robust and reliable, CS700 and CS800 floor sweepers were designed to offer great productivity and effective, affordable cleaning.

CS700 and CS800 floor sweepers are available battery-powered or with gasoline engine, and with two different working widths to meet all cleaning requirements.

Extremely effective also in the presence of coarse dirt, these sweepers are suitable for cleaning indoor and outdoor floors and surfaces in industrial environments, warehouses, shopping areas, car parks and in the public, automotive and transport sectors and areas measuring up to 15.000 sq.m.



KEY ELEMENTS

- Two types of power supply: battery-powered or gasoline to meet different cleaning requirements
- Maneuverable and handy
- Two types of unloading, manual or automatic, able to unload at up to 1.25 m above the ground
- Available upon request in versions with two side brushes
- Intuitive driving and simple controls
- In the battery-powered version, the various functions (brushes, traction and suction) are activated by specific motors
- The autonomy of the battery-powered version can be up to 4 hours, or 15.000 sq.m. cleaned, emission free
- Unlimited autonomy for version with internal combustion engine
- Vacuum bypass to clean the filter or work on damp surfaces
- Floating, self-adjusting, cusp shape central brush (hydraulic movement in combustion version), always in contact with the ground
- Brush system that allows you to always maintain constant performance, even if the brush wears out, and thus helps decrease energy consumption
- On the battery-powered version, the whole battery/motor compartment is protected against dust penetration, with maximum accessibility for the electrical system, positioned in a protected area in the front part of the machine



TECHNICAL DATA		CS700 B	CS700 H
Theoretical productivity	up to sqm/h	6300	6300
Working width with central brush	mm	700	700
Working width with side brush	mm	875	875
Working width with two side brushes	mm	1050	1050
Central brush	Ø/mm	285x678	285x678
Side brush	mm	400	400
Standard filter	format	Panel	Panel
Standard filter	material	Paper	Paper
Filtering surface	sqm	4	4
Debris hopper capacity	l	60	60
Type of drainage	-	Manual	Manual
Supply/traction	V	Battery 24V/ aut.	Gasoline/aut.
Machine dimensions (LxHxA)	mm	1600x1310x940	1600x1310x940



- The versions with internal combustion engine (CS700 H and CS800 H) are equipped with a complete hydraulic system and have no electronic circuit boards to increase reliability and ensure the utmost peace of mind when working in particularly dirty conditions
- Vacuumed and filtered air comes out through the rear grille positioned in a very high area. In this way, the dust deposited on the surface around the machine is not lifted, guaranteeing excellent cleaning results
- The CS700/CS800 sweepers are available with panel or fabric pocket filter
- Panel filter: for standard applications, easily replaced with no need for tools
- Fabric filter (optional): excellent filtering results also in environments with presence of very fine dust
- Extremely easy to replace filtering system so that the sweeper can be adapted to different work environments
- Central brush can be taken off without any tools
- All the components are easy to access, to carry out checks and maintenance practically and quickly
- The battery-powered versions can have an on-board battery charger
- Blinking light kit to increase safety by indicating that the machine is passing
- Overhead guard kit to protect the operator

TECHNICAL DATA		CS800 B	CS800 H
Theoretical productivity	up to sqm/h	6800	6800
Working width with central brush	mm	800	800
Working width with side brush	mm	975	975
Working width with two side brushes	mm	1150	1150
Central brush	Ø/mm	285x788	285x788
Side brush	mm	400	400
Standard filter	format	Panel	Panel
Standard filter	material	Paper	Paper
Filtering surface	sqm	5	5
Debris hopper capacity	l	70	70
Type of drainage	-	Electric	Electric
Supply/traction	V	Battery 24V/ aut.	Gasoline/ aut.
Machine dimensions (Lxhxa)	mm	1600x1310x1080	1600x1310x1080

CS80 CS90 CS110

CS80/CS90/CS110 ride-on industrial sweepers are among the most compact in their category. Thanks to their box frame, built around the central brush, they have extremely limited dimensions and are very robust at the same time. This makes the CS80/CS90/CS110 sweepers extremely versatile, so they can be used to clean both large surfaces and narrow or cluttered areas.

CS80/CS90/CS110 are available in battery-powered or Diesel engine versions, with three different working widths: 112 cm (CS80), 122 cm (CS90) or 142 cm (CS110). CS110 is also available in a Bifuel version with gasoline/LPG endothermic engine to reduce consumption and emissions.

These extremely productive sweepers are suitable for cleaning the most resistant dirt on outdoor and indoor surfaces in industrial environments, department stores, camping sites, squares and car parks up to 30.000 sq.m..



KEY ELEMENTS

- Three types of power supply: battery, diesel and Bifuel to meet different cleaning needs
- The hydraulic system was designed to reduce waste and keep oil temperature within optimum values, increasing performance and minimizing the use of energy
- Brushes lifting by means of two comfortable independent levers
- The autonomy of the battery-powered version can be up to 4 hours
- To guarantee maximum driving comfort for the operator at all times and maximum reliability, all the main functions are hydraulic: traction, lifting and emptying of the waste container, brush rotation, dust vacuum
- Innovative instrument panel, inspired by automobile industry, provides all functions available at a glance
- The innovative steering wheel has been designed to make driving extremely comfortable
- Access from both sides
- Super-comfortable seat with armrests
- Automatic emptying: The frontal dirt collection container is lifted by a 2-piston hydraulic system, operated by a handy control on the driver's seat. The vacuum is activated by a hydraulic motor, and the discharge height can be up to 1.4m
- A fabric pocket filter, with a large filtering surface 7 sq.m. (CS80) - 8 sq.m. (CS90-CS110) - lasts a very long time and ensures excellent results even in environments where there is a lot of fine dust.
- Maximum access to the engine compartment, so any type of maintenance, such as changing the oil or filters, can be done inside the machine very easily
- In the B version, the box housing the electrical devices is located centrally to allow their quick and easy check as well as check of the fluid level in the battery elements. A battery box can be installed with a capacity of up to 320 Ah C5 (CS80B) and 480 Ah C5 (CS90B-CS110B)



TECHNICAL DATA		CS80 B	CS80 D	CS90 B	CS90 D
Theoretical productivity	up to sqm/h	9510	10080	10370	10980
Working width with central brush	mm	800	800	900	900
Working width with side brush	mm	1120	1120	1220	1220
Working width with two side brushes	mm	1440	1440	1540	1540
Central brush	Ø/mm	320x790	320x790	320x890	320x890
Side brush	mm	460	460	460	460
Standard filter	format	Pocket	Pocket	Pocket	Pocket
Standard filter	material	Fabric	Fabric	Fabric	Fabric
Filtering surface	sq.m.	7	7	8	8
Debris hopper capacity	l	360	360	400	400
Type of drainage	-	Hydraulic	Hydraulic	Hydraulic	Hydraulic
Supply/traction	V	Battery 36V/aut. hydraulic	Diesel/aut. hydraulic	Battery 36V/aut. hydraulic	Diesel/aut. hydraulic
Machine dimensions (LxHxA)	mm	2020x1430x1130	2020x1430x1130	2020x1430x1130	2020x1430x1130



- The pressure and the height adjustment of the central brush on the basis of its degree of wear can be easily controlled using the knob near the brush itself. This ensures a longer brush service life
- Floating and self-adjusting central brush keeps in contact with the ground all the time
- Side brush retracts in the event of accidental knocks, thus avoiding all possible damage. The brush's slanting angle can be adjusted to better adapt to cleaning along borders
- The vacuumed air is discharged through grilles located high up on the machine. This means that none of the dust that has settled on the surface surrounding the machine is lifted, thus guaranteeing excellent cleaning results
- Besides reducing mechanical stress the large diameter wheels also make working more comfortable. Their robust support contributes to maintaining operating characteristics unaltered
- The vacuum turbine (installed directly on the waste container) is controlled by the hydraulic motor, guaranteeing constant performance over time
- Hydraulically operated brakes
- Headlights as standard to make the sweeper more visible when operating and improve visibility
- Blinking light kit to increase safety by indicating that the machine is passing
- Overhead guard to protect operators
- Seat belts

TECHNICAL DATA		CS110 B	CS110 D	CS110 Bifuel
Theoretical productivity	up to sqm/h	12070	12078	12780
Working width with central brush	mm	1100	1100	1100
Working width with side brush	mm	1420	1420	1420
Working width with two side brushes	mm	1740	1740	1740
Central brush	Ø/mm	320x1090	320x1090	320x1090
Side brush	mm	460	460	460
Standard filter	format	Pocket	Pocket	Pocket
Standard filter	material	Fabric	Fabric	Fabric
Filtering surface	sq.m.	8	8	8
Debris hopper capacity	l	480	480	480
Type of drainage	-	Hydraulic	Hydraulic	Hydraulic
Supply/traction	V	Battery 36V/aut. hydraulic	Diesel/aut. hydraulic	Bifuel LPG/aut. hydraulic
Machine dimensions (Lxhxa)	mm	2020x1430x1430	2020x1430x1430	2020x1430x1430

CS100 CS120

The CS100 and CS120 ride-on industrial sweepers are at the top of the range in terms of power, performance, resistance and ability to perform heavy duty tasks. Extremely versatile, CS100/CS120 were designed to collect both solid debris and light dust extremely easily.

Two different working widths are available: 100 and 120 cm, and battery- or diesel-powered. The CS120 model is also available with Bifuel endothermic engine (gasoline/LPG) to reduce consumption and emissions.

These extremely high-performance sweepers are suitable for cleaning the most resistant dirt over vast surfaces, both outdoor and indoor. They are particularly effective in industrial environments, milling and feed industrial structures, mining industrial structures, large car parks, port areas and airports and on surfaces measuring up to 40.000 sq.m.



KEY ELEMENTS

- Three types of power supply: battery, diesel and Bifuel to meet different cleaning needs
- Maximum comfort for the operator: adjustable steering wheel and super-comfortable seat with armrests
- Access from both sides
- Innovative instrument panel, inspired by automobile industry, provides all functions available at a glance
- Automatic emptying: The frontal dirt collection container is lifted by a 2-piston hydraulic system, operated by a handy control on the driver's seat. The vacuum is activated by a hydraulic motor
- The controls and motors fitted on the CS100/CS120 models are hydraulically operated to guarantee reliability and ease of use
- All models feature an oil cooler with independent thermostat and solenoid valve in order to keep oil temperature within the ideal range and ensure best efficiency. In this way consumption is reduced and components' life extended
- Forward movement/reverse pedal power assisted for particularly smooth and precise operation
- Maximum access to the engine compartment, so any type of maintenance, such as changing the oil or filters, can be done inside the machine very easily
- Pressure and height adjustment of the central brush independent
- Floating and self-adjusting central brush keeps in contact with the ground all the time
- Side brush retracts in the event of accidental knocks, thus avoiding all possible damage. The brush's slanting angle can be adjusted to better adapt to cleaning along borders, etc.
- Optimized hydraulic system to fully exploit the sweeping machine's performance while using the least possible amount of oil.
- The autonomy of the battery-powered version can be up to 5 hours



TECHNICAL DATA		CS100 B	CS100 D
Theoretical productivity	up to sqm/h	9450	11475
Working width with central brush	mm	1000	1000
Working width with side brush	mm	1350	1350
Working width with two side brushes	mm	1700	1700
Central brush	Ø/mm	380x1000	380x1000
Side brush	mm	500	500
Standard filter	format	Pocket	Pocket
Standard filter	material	Fabric	Fabric
Filtering surface	sq.m.	10	10
Debris hopper capacity	l	570	570
Type of drainage	-	Hydraulic	Hydraulic
Supply/traction	V	Battery 36V/aut. hydraulic	Diesel/aut. hydraulic
Machine dimensions (LxHxA)	mm	2330x1720x1380	2330x1720x1380



- The rear motorwheel traction drive makes the machine safe and maneuverable, ensuring an extremely tight curve radius
- Fabric pocket filter, with large filtering surface area of over 10 sq.m., is long-lasting and offers excellent vacuum results, even in environments where large amounts of fine dusts are present. No maintenance is required thanks to the regular use of the electrical filter shaker
- The innovative steering wheel has been designed to make driving extremely comfortable
- Besides reducing mechanical stress the large diameter wheels also make working more comfortable. Their robust support contributes to maintaining operating characteristics unaltered
- Hydraulically operated brakes
- Headlights as standard to make the sweeper more visible when operating and improve visibility
- Blinking light kit to increase safety by indicating that the machine is passing
- Overhead guard to protect operators
- Seat belts
- Also available as a type-approved street version

TECHNICAL DATA		CS120 B	CS120 D	CS120 Bifuel
Theoretical productivity	up to sqm/h	10850	13175	13175
Working width with central brush	mm	1200	1200	1200
Working width with side brush	mm	1550	1550	1550
Working width with two side brushes	mm	1850	1850	1850
Central brush	Ø/mm	380x1200	380x1200	380x1200
Side brush	mm	500	500	500
Standard filter	format	Pocket	Pocket	Pocket
Standard filter	material	Fabric	Fabric	Fabric
Filtering surface	sq.m.	11	11	11
Debris hopper capacity	l	600	600	600
Type of drainage	-	Hydraulic	Hydraulic	Hydraulic
Supply/traction	V	Battery 36V/aut. hydraulic	Diesel/aut. hydraulic	Bifuel LPG/aut. hydraulic
Machine dimensions (Lxhxa)	mm	2330x1720x1510	2330x1720x1510	2330x1720x1510

hp4000

HP4000 is the powerful street sweeper that combines the performance of two machines in one. Thanks to the TwinAction system, the HP4000 combines the force of the mechanical action to collect the most substantial residues with the effectiveness of a vacuum action to vacuum up the finest dust. The rotating shaft with hammers system with which it is equipped allows this road sweeper to easily pick up large debris such as branches and leaves, which are then shredded and vacuumed for consistently flawless cleaning results. This results in the debris hopper of the HP4000 to fill more slowly than a conventional sweeping machine, allowing significant savings in terms of money and time for emptying operations.

Designed to be have extremely high-performance levels, the Comac HP4000 also has a green soul to take cleaning operations to the next level by reducing both waste and emissions. In fact, in addition to reintroducing clean air into the environment, this 4.1-sq.cm street sweeper is designed to work without water, allowing savings of up to 150,000 litres/year. In this way, water is used only in auxiliary functions to break down dust on side brushes, when dumping waste, or with the pressure washer for precision cleaning.

HP4000 is the mechanical and vacuum street sweeping machine designed for cleaning urban areas, maintaining warehouses or parking lots, and due to its low water consumption, it is particularly suitable for cleaning industrial structures and cement plants with large amounts of dust. Its design ensures that no element touches the ground so that it sweeps effectively over uneven ground, near bumps and pavements, or where there are roots of pine trees and manhole covers.



KEY ELEMENTS

- Three available configurations designed for the main use situations: Municipal for municipal utilities and urban centres; Cement for cement plants, ceramic sector and where water cannot be used; Heavy Industry for heavy industry and the metallurgical sector
- Possibility to fully configure Comac HP4000 to create the perfect street sweeping machine for any cleaning need
- The power of the TwinAction system effectively vacuums and traps fine dust, minimising water usage and ensuring exceptional performance even in the most demanding conditions
- Saving up to 150,000 litres of water per year. Unlike traditional sweeping machines, with HP4000 the side brushes have an auxiliary function (only used along edges and pavements), consequently reducing the use of water which is used only in a nebulized state and only to control dust, without wetting the ground
- Reduction of particulate matter: The large 35 sq.m class L hydro and oleophobic air filter, combined with the power of the TwinAction system, ensures clean ambient air, free of PM10 and PM2.5 particles
- Reduction of particulate matter: The large 35 sq.m class L hydro and oleophobic air filter, combined with the power of the TwinAction system, ensures clean ambient air, free of PM10 and PM2.5 particles
- Reduced fuel consumption and atmospheric emissions thanks to high-efficiency hydraulics and the EURO VI phase EH engine, specifically designed for industrial applications, certified to the most restrictive atmospheric emissions standard in its class and programmed to work at low rpm while maintaining constant performance levels (HP4000 EU6 FASE EH)
- Rotating shaft equipped with hammers to easily collect even large residue, which will then be shredded, without the risk of clogging the vacuum duct
- No element of the HP4000 street sweeper touches the ground, può therefore it sweeps effectively over uneven ground and near speed bumps or pavements
- The central brush, thanks to its conformation and automatic pressure adjustment, can easily follow the contour of any surface, even uneven ones, for perfect cleaning every time
- Side brush tracking kit to constantly follow the machine's progress and ensure excellent cleaning results even on bends
- The swinging third brush has a wide opening with up to 180° rotation to reach even the most distant debris and then conveys it to the central brushes
- Water spraying nozzles which can be positioned on the side brushes ensure complete control of dust during the sweeping action
- Effective cleaning even in reverse, to optimize productivity in any situation
- 4 hydraulic suspensions for excellent road holding even at gross weight and high comfort levels when passing over bumps and pavements thanks to three adjustment levels and self-levelling trim allowing the HP4000 sweeping machine to adapt perfectly to any surface: working position for the lowest level, transfer position for the intermediate level, and maintenance position to raise the machine and facilitate brush replacement



TECHNICAL DATA		HP4000
Capacity of waste container	l	4100
Working width with central brush	mm	1400
Working width with two side brushes	mm	2400
Working width with two side brushes and swinging brush	mm	3100
Central brush	Ø/mm	580x1400
Side brush	mm	900
Standard filter	format	Pocket
Standard filter	material	Fabric
Filtering surface	sq.m.	35
Type of drainage	-	Hydraulic
Supply/traction	V	Diesel 126HP-100KW/Hydraulic
Machine dimensions (LxHxI)	mm	5450x2800x1900



- Intelligent 4-wheel steering system with symmetrical front and rear corners with 4500 mm turning circle to ensure high manoeuvrability of the sweeping machine
- Rear wheel steering lock which allows greater comfort even on long stretches of road without bends
- Large 4.1 - sq.cm flat-bottomed debris hopper ensuring many hours of continuous work and reverse cone design of the vacuum channel to facilitate the passage of debris
- Debris hopper fill sensor to constantly monitor the amount of waste collected
- Quick and easy wastes dumping operations with hydraulic tailgate control, high or low debris hopper dumping kit, and dust suppression kit for both low and high dumping operations
- By-pass system to divert airflow by excluding the filter, for working in wet conditions, such as in the rain
- Great manoeuvrability, even near walls or fences, provides the HP4000 with ease of handling to operate in places where space is limited such as historical town centers or cluttered areas, at the same time guaranteeing maximum vehicle stability during transfer even at the highest speed
- Traction is completely hydraulic, provided by two motors installed directly on the rear wheels and a variable capacity pump to adjust the speed from 0 to 40 km/h
- The suspensions and the braking system guarantee driving in complete safety with excellent road holding, even when fully loaded
- Large-diameter manual debris vacuum hose equipped with an arm to allow the operator to easily pick up material deposited in inaccessible areas and debris of various sizes, such as paper, leaves, bottles and cans
- Pressure washer kit to easily clean the machine and surrounding areas
- Filtering unit with surface of 35 m² and equipped with 2 electric filter shakers for cleaning. These characteristics, together with the choice of materials (polyester) and the fact that the filter operates dry, virtually eliminate the need for routine maintenance; they also ensure the return of perfectly clean air into the environment
- Ample visibility thanks to the fully glazed cab allowing full visibility for the operator, including on the front brushes
- Maximum operator comfort due to the comfortable pneumatic driver's seat, which is insulated with vibration damping mounts, allowing a comfortable and smooth ride, even after many hours of work
- The display allows the vacuum speed to be adjusted according to 3 different modes to adapt the sweeping machine to specific cleaning needs

Consult the Comac HP4000 brochure for more details on available configurations, standard equipment, options and accessories.



hp6000

Comac HP6000 is a suction and mechanical street sweeper engineered for cleaning roads outside urban areas, large industrial facilities, and environments with a high concentration of dust and debris. Thanks to the combined mechanical and suction action, it ensures high productivity and consistently reliable cleaning results, even in the most demanding operating conditions. As the evolution of Comac street sweepers, HP6000 integrates the TwinAction System, which combines the strength of mechanical collection for bulky waste with the power of suction to capture fine dust in a single pass. The rotating shaft with hammers of the integrated waste shredding system allows branches, leaves, and bulky debris to be crushed, preventing clogging and ensuring continuous operation along extra-urban areas, industrial sites, and high-dirt production environments. Collected material is conveyed into the large 6.1 sq.cm waste hopper, enabling many hours of continuous operation, reducing downtime for emptying, and optimising operating time and costs. The machine structure is designed so that no component comes into direct contact with the ground, allowing HP6000 to sweep effectively on uneven surfaces, close to kerbs, speed bumps and manholes. The central brush, with automatic pressure adjustment, accurately follows the ground profile, ensuring uniform cleaning across all surface types. HP6000 is designed to operate primarily dry, significantly reducing water consumption. Water is used only for auxiliary functions such as dust suppression on the side brushes or during unloading operations. This results in water savings of up to 150,000 litres per year and more efficient management of collected waste. Thanks to the large filtration system and the power of the TwinAction System, HP6000 effectively captures fine dust particles PM10 and PM2.5, releasing clean air back into the environment. HP6000 is the ideal suction and mechanical street sweeper for those seeking maximum productivity, operational reliability and reduced environmental impact in extra-urban and industrial cleaning applications.



KEY ELEMENTS

- Three available configurations designed for the main use situations: Municipal for municipal utilities and urban centres; Cement for cement plants, ceramic sector and where water cannot be used; Heavy Industry for heavy industry and the metallurgical sector
- Possibility to fully configure Comac HP6000 to create the perfect street sweeping machine for any cleaning need
- TwinAction System: the mechanical action involves the movement of the central brush, which collects material from the ground and launches it into a hopper where, thanks to a rotating shaft equipped with hammers, it is crushed and broken down. At this point, by means of the vacuum action, the material is raised to the collection hopper, while the sucked air is filtered and returned to the environment perfectly clean
- The power of the TwinAction system effectively vacuums and traps fine dust, minimising water usage and ensuring exceptional performance even in the most demanding conditions
- Saving up to 150,000 litres of water per year. Unlike traditional sweeping machines, with HP6000 the side brushes have an auxiliary function (only used along edges and pavements), consequently reducing the use of water which is used only in a nebulized state and only to control dust, without wetting the ground
- Reduction of particulate matter: The large 35 sq.m class L hydro and oleophobic air filter, combined with the power of the TwinAction system, ensures clean ambient air, free of PM10 and PM2.5 particles
- Reduced fuel consumption and atmospheric emissions thanks to high-efficiency hydraulics and the EURO VI phase EH engine, specifically designed for industrial applications, certified to the most restrictive atmospheric emissions standard in its class and programmed to work at low rpm while maintaining constant performance levels (HP6000 EU6 FASE EH)
- Rotating shaft equipped with hammers to easily collect even large residue, which will then be shredded, without the risk of clogging the vacuum duct
- No element of the HP6000 street sweeper touches the ground, therefore it sweeps effectively over uneven ground and near speed bumps or pavements
- The central brush, thanks to its conformation and automatic pressure adjustment, can easily follow the contour of any surface, even uneven ones, for perfect cleaning every time
- Side brush tracking kit to constantly follow the machine's progress and ensure excellent cleaning results even on bends
- The swinging third brush has a wide opening with up to 180° rotation to reach even the most distant debris and then conveys it to the central brushes
- Water spraying nozzles which can be positioned on the side brushes ensure complete control of dust during the sweeping action
- Effective cleaning even in reverse, to optimize productivity in any situation
- 4 hydraulic suspensions for excellent road holding even at gross weight and high comfort levels when passing over bumps and pavements thanks to three adjustment levels and self-leveling trim allowing the HP6000 sweeping machine to adapt perfectly to any surface: working position for the lowest level, transfer position for the intermediate level, and maintenance position to raise the machine and facilitate brush replacement
- Intelligent 4-wheel steering system with symmetrical front and rear corners with 4600 mm turning circle to ensure high manoeuvrability of the sweeping machine



TECHNICAL DATA		HP6000
Working width with central brush	mm	1400
Working width with two side brushes	mm	2700
Working width with two side brushes and swinging brush	mm	3400
Central brush	Ø/mm	580x1400
Side brush	mm	1000
Standard filter	format	Pocket
Standard filter	material	Polyester
Filtering surface	sq.m.	35
Capacity of waste container	l	6100
Type of drainage	-	Hydraulic
Supply/traction	V	Diesel 156HP-115KW/Hydraulic
Machine dimensions (LxHxX)	mm	6080x2950x2000



- Rear wheel steering lock which allows greater comfort even on long stretches of road without bends
- Large 6.1-sq.cm flat-bottomed debris hopper ensuring many hours of continuous work and reverse cone design of the vacuum channel to facilitate the passage of debris
- Debris hopper fill sensor to constantly monitor the amount of waste collected
- Quick and easy wastes dumping operations with hydraulic tailgate control, high or low debris hopper dumping kit, and dust suppression kit for both low and high dumping operations
- By-pass system to divert airflow by excluding the filter, for working in wet conditions, such as in the rain
- Great manoeuvrability, even near walls or fences, provides the HP6000 with ease of handling to operate in places where space is limited such as historical town centers or cluttered areas, at the same time guaranteeing maximum vehicle stability during transfer even at the highest speed
- Traction is completely hydraulic, provided by two motors installed directly on the rear wheels and a variable capacity pump to adjust the speed from 0 to 40 km/h
- The suspensions and the braking system guarantee driving in complete safety with excellent road holding, even when fully loaded
- Large-diameter manual debris vacuum hose equipped with an arm to allow the operator to easily pick up material deposited in inaccessible areas and debris of various sizes, such as paper, leaves, bottles and cans
- Pressure washer kit to easily clean the machine and surrounding areas
- Filtering unit with surface of 35 sqm and equipped with 2 electric filter shakers for cleaning. These characteristics, together with the choice of materials (polyester) and the fact that the filter operates dry, virtually eliminate the need for routine maintenance; they also ensure the return of perfectly clean air into the environment
- Ample visibility thanks to the fully glazed cab allowing full visibility for the operator, including on the front brushes
- Maximum operator comfort due to the comfortable pneumatic driver's seat, which is insulated with vibration damping mounts, allowing a comfortable and smooth ride, even after many hours of work
- The display allows the vacuum speed to be adjusted according to 3 different modes to adapt the sweeping machine to specific cleaning needs

Consult the Comac HP6000 brochure for more details on available configurations, standard equipment, options and accessories.

VACUUM



Comac offers a range of both professional and industrial vacuum cleaners designed to be easy to handle, versatile, powerful and silent, to satisfy any type of vacuuming requirement.
The line of Comac vacuum cleaners also includes special models for the thorough cleaning of fabrics and carpet floors.

Professional vacuum cleaners

Professional vacuum cleaners that are easy to handle and robust, offering excellent versatility to meet a diverse range of needs and applications: from cleaning of environments to vacuuming solid and liquid residues.



Carpet vacuum cleaners

The Comac solution for the professional scrubbing of carpet floors and for the cleaning of fabric surfaces such as upholstery that uses a new concept of injection/ extraction with "dry foam".



CARPET



Industrial vacuum cleaners

Industrial vacuum cleaners that are easy to handle, versatile, powerful and quiet, with single- or three-phase power supply, are the ideal machines for vacuuming dusts, solids or liquids in every situation and environment.



CA Prima

CA Cube

CA To

CA Tec

CA X-Vactor

CA Atex

CA Oil

CA Pak

CA BACK is the handy Comac portable vacuum cleaner that's lightweight yet powerful, allowing you to easily clean even the areas that are hardest to reach. This backpack vacuum cleaner is designed to be practical, guaranteeing total freedom of movement for the user.

Its compact design and handy regulating straps mean the CA BACK vacuum cleaner can be adapted for use by anyone, creating the perfect ally for daily cleaning.

CA BACK comes in two versions: battery-powered, for freely cleaning even areas with no electricity supply; an electric version, so you don't need to worry about recharging. This backpack vacuum cleaner is the ideal choice for cleaning in difficult places such as trains, buses, boats, aeroplanes, cinemas, theatres, staircases, offices, hotels and other accommodation facilities.



KEY ELEMENTS

- The high-efficiency vacuum system ensures excellent results for a long time
- A handy command lets you select the required vacuum intensity to best handle even the most stubborn dirt
- The 4 filtering stages ensure that clean air is delivered back into the room and, thanks to the HEPA 13 filter (available as an optional), even fine particles can be removed
- Thanks to the capacious 5.7-litre collection bag, it can work uninterrupted for long stretches
- The telescopic tube (easy to handle and pull out, with an overall extension of 90 cm) allows you to clean even those areas hard to reach, like ceilings
- The low noise level of CA BACK makes it ideal for use even when there are people in the room
- A handy support on the bottom of the vacuum cleaner means you can put it down on any surface if necessary
- Thanks to the handle on the upper part, you can move CA BACK around effortlessly
- CA BACK E is fitted with a 15 m high-visibility, anti-torsion cable
- The wide choice of accessories makes this vacuum cleaner extremely versatile



TECHNICAL DATA		CA BACK E	CA BACK B
Voltage-Frequency	V-phase-Hz	220/240-1-50/60	36
Max. power	W-Hp	890	300
Motor	n./type	1	1/brushless
Vacuum	mmH ₂ O	2141	1682
Air flow	l/s	29	25
Capacity of tank	l	6	6
Cable length	m	15	-
Standard accessories diameter	mm	Ø 32	Ø 32
Noise level	dB	71	<70
Machine dimensions (LxHxA)	mm	265x496x223	265x629x223
Net weight	Kg	5,5	6,9

The CA Dry range is made up of professional vacuum cleaners, produced in three versions: CA 15 BASIC, CA 15 EXTRA and CA 15 SILENZIO. These vacuum cleaners have been painstakingly designed to guarantee excellent cleaning results while being extremely easy to use. The CA 15 vacuum cleaners feature a compact design that makes them very easy to handle and transport. Another thing that makes the CA Dry range distinctive is being made up of vacuum cleaners suitable for working in places where the noise level, air quality and ease of use are essential.

These professional vacuum cleaners are the perfect choice for cleaning contractors and in the health, public, HoReCa, Retail and Well-being & Sports sectors.



KEY ELEMENTS

- The output air is filtered to trap any residue produced by the brushes of the motor
- The intake air on CA 15 BASIC is filtered by a double layer paper bag and foam filter. Optional cartridge filter
- The intake air on CA 15 EXTRA and CA 15 SILENZIO is filtered by a microfiber bag and a cartridge filter
- CA 15 BASIC is the ideal vacuum cleaner for performing cleaning operations that require practicality and quiet operation. Heavy-duty and equipped with a powerful engine, it allows continuous cleaning operations without interruptions
- CA 15 EXTRA and CA 15 SILENZIO are more complete vacuum cleaners, with tube-holder handle, accessory holder, non-marking wheels and bag full light
- CA 15 SILENZIO is a powerful vacuum cleaner when the situation calls for it, but efficiently delicate when discretion is required. A series of technical devices allow the operator to control the motor power and the system of filtration in series returns purified air to the environment
- A convenient button enables users to reduce the noise level to 53 dB for the CA 15 SILENZIO
- CA 15 EXTRA and CA 15 SILENZIO are vacuum cleaners equipped with a handy additional socket for powering an electric brush
- CA 15 EXTRA and CA 15 SILENZIO are equipped with an accessory holder panel, removable cable and full bag warning light
- Optional HEPA filters available both for intake and output
- Wide range of accessories available, making the CA DRY vacuum cleaner range extremely customizable

TECHNICAL DATA		CA 15 Easy	CA POD Extra	CA POD Silenzio
Voltage-Frequency	V-phase-Hz	220/240-1-50/60*	220/240-1-50/60*	220/240-1-50/60*
Max. power	W-Hp	800	800	800
Motor	n./type	1-Through flow monostade	1-Through flow monostade	1-Through flow monostade
Vacuum	mmH ₂ O	2000	2000	2000
Air flow	l/s	40	40	40
Capacity of tank	l	13	13	13
Cable length	m	10	15	15
Standard accessories diameter	mm	Ø 32	Ø 32	Ø 32
Noise level	dB	63	63	53-60 réglable
Machine dimensions (Lxhxa)	mm	360x450x390	354x478x455	354x478x455
Net weight	Kg	7	7	7

*other voltages available upon request

The professional wet & dry vacuum cleaners in the CA Wet&Dry range with single motor have been designed to offer practicality and professional results. These vacuum cleaners are equipped with a very spacious tank, but one designed to be practical and user-friendly. They are tough and easy to handle, and are used to clean medium surfaces or suck up solid material of various dimensions.

The versatility and performance of these professional vacuum cleaners makes them suitable for cleaning contractors, demanding applications and rental in public environments, in the HoReCa, Well-being & Sports sectors.



KEY ELEMENTS

- Available with polyethylene or stainless steel tank
- Fixed front accessory also available for easy liquid vacuum on wide areas
- Possibility of choosing versions with fixed trolley
- Some models can be equipped with optional quick drainage kit to facilitate emptying operations
- CA80 is equipped with drainage hose, accessory holder and dedicated opening for washing the tank
- Fabric filter as standard
- Foam filter as standard
- Cartridge filter, washable cartridge filter, HEPA cartridge filter and nylon filter available as options.
- Wide range of accessories available, making the CA WET&DRY 1 Motor vacuum cleaner range extremely customizable

TECHNICAL DATA		CA30	CA60	CA80	CA P25 WD	CA A27 WD	CA P40 WDM
Voltage-Frequency	V-phase-Hz	220/240-1-50/60 *	220/240-1-50/60 *	220/240-1-50/60 *	220/240-1-50/60 *	220/240-1-50/60 *	220/240-1-50/60 *
Max. power	W-Hp	1000	1000	1000	1000	1000	1000
Motor	n./type	1-double stage bypass	1-double stage bypass	1-double stage bypass	1-double stage bypass	1-double stage bypass	1-double stage bypass
Vacuum	mmH ₂ O	2100	2100	2100	2100	2300	2300
Air flow	l/s	52	52	52	52	54	54
Capacity of tank	l	30	60	80	35	35	60
Tank material	-	Polyethylene	Polyethylene	Polyethylene	Polyethylene	Stainless steel	Polyethylene
Cable length	m	7	7	7	7	7	7
Standard accessories diameter	mm	Ø 37	Ø 37	Ø 40	Ø 40	Ø 40	Ø 40
Noise level	dB	70	70	70	70	70	70
Machine dimensions (Lxhxa)	mm	425x450x630	425x450x760	480x605x915	378x400x670	470x470x775	510x575x930
Net weight	Kg	10	12	15	8	9	14

* other voltages available upon request

The professional wet & dry vacuum cleaners in the CA Wet&Dry range with dual motor have been designed to offer practicality and professional results.

These vacuum cleaners are equipped with a very spacious tank, but one designed to be practical and user-friendly. They are tough and easy to handle, and are used to clean medium surfaces or suck up solid material of various dimensions.

The versatility and performance of these professional vacuum cleaners makes them suitable for cleaning contractors, demanding applications and rental in public environments, in the HoReCa, Well-being & Sports sectors. Models with dual motor are the ideal solution for vacuuming dust and liquids in the transport, logistics and large-scale retailing sector.



KEY ELEMENTS

- Available with polyethylene, polypropylene or stainless steel tank
- Fixed front accessory also available for easy liquid vacuum on wide areas
- Possibility of choosing versions with fixed trolley or tilting trolley for more practical emptying
- Some models can be equipped with optional quick drainage kit to facilitate emptying operations
- Vacuum cleaners with tilting trolley make use of the TIP & POUR system that overturns the tank and makes emptying very easy
- CA 110.2 is equipped with drainage hose, accessory holder and dedicated opening for washing the tank
- Fabric filter as standard
- Foam filter as standard
- Cartridge filter, washable cartridge filter, HEPA cartridge filter and nylon filter available as options
- Wide range of accessories available, making the CA WET&DRY 2 Motors vacuum cleaner range extremely customizable

TECHNICAL DATA		CA 110.2	CA P58.2 WD	CA P58.2 WDM	CA P58.2 WDB	CA A58.2 WDB
Voltage-Frequency	V-phase-Hz	220/240-1-50/60 *	220/240-1-50/60 *	220/240-1-50/60 *	220/240-1-50/60 *	220/240-1-50/60 *
Max. power	W-Hp	2000	2000	2000	2000	2000
Motor	n./type	2-double stage bypass	2-double stage bypass	2-double stage bypass	2-double stage bypass	2-double stage bypass
Vacuum	mmH ₂ O	2300	2100	2300	2300	2300
Air flow	l/s	108	104	108	108	108
Capacity of tank	l	110	77	77	77	77
Tank material	-	Polyethylene	Polypropylene	Polypropylene	Polyethylene	Stainless steel
Cable length	m	7	7	7	7	7
Standard accessories diameter	mm	Ø 40	Ø 40	Ø 40	Ø 40	Ø 40
Noise level	dB	72	72	72	70	72
Machine dimensions (LxHxA)	mm	510x665x985	550x550x890	515x576x940	545x635x970	545x642x980
Net weight	Kg	21	18,5	18,5	18,5	20

*other voltages available upon request

The professional wet & dry vacuum cleaners in the CA Wet&Dry range with triple motor have been designed to offer practicality and professional results.

These vacuum cleaners are equipped with a very spacious tank, but one designed to be practical and user-friendly. They are tough and easy to handle, and are used to clean medium surfaces or suck up solid material of various dimensions.

The versatility and performance of these professional vacuum cleaners makes them suitable for cleaning contractors, demanding applications and rental in public environments, in the HoReCa, Well-being & Sports sectors. Models with triple motor are the ideal solution for vacuuming dust and liquids in the transport, logistics and large-scale retailing sector.



KEY ELEMENTS

- Available with stainless steel tank
- Equipped with fixed trolley
- Equipped with optional quick drainage kit to facilitate emptying operations
- Fixed front accessory also available for easy liquid vacuum on wide areas
- Shift&Clean: innovative cartridge filter cleaning system
- Foam filter as standard
- Fabric filter, cartridge filter and nylon filter available as options
- Wide range of accessories available, making the CA WET&DRY 3 Motors vacuum cleaner range extremely customizable

TECHNICAL DATA		CA A550.3 WDM S
Voltage-Frequency	V-phase-Hz	220/240-1-50/60 *
Max. power	W-Hp	3000
Motor	n./type	3-double stage bypass
Vacuum	mmH ₂ O	2100
Air flow	l/s	147
Capacity of tank	l	65
Tank material	-	Stainless steel
Cable length	m	10
Standard accessories diameter	mm	Ø 40
Noise level	dB	73
Machine dimensions (Lxhxa)	mm	525x570x950
Net weight	Kg	22

* other voltages available upon request

The vacuum cleaners in the CA Prima series combine the power of two-stage bypass motors with the robust frame of an industrial vacuum cleaner. These vacuum cleaners are equipped with 2 or 3 motors that deliver an excellent air flow rate. The dedicated filtration chamber on CA Prima vacuum cleaners ensures maximum filtering surface.

The vacuum cleaners in the CA Prima series can operate in various sectors and be adapted to different applications for environments in the industrial, automotive, handicraft, transport and logistics sectors.



KEY ELEMENTS

- The tangential nozzle creates a vortex in the incoming dust. It helps keep the filter clean
- Internal cyclone cone. Further protects the filter from dust and debris
- Easy lower tank removal
- Window for checking the lower tank fill level
- The independent filter cleaning mechanism makes it vibrate continuously during use. Convenient filter shaker knob located on tank
- The steel head on the CA Prima 3M is indestructible. Great for rental
- Robust steel frame
- Braked wheels
- Handy accessory basket
- L-Class polyester radial filter as standard
- Filters available in various classes (optional): Class L / Class M / Class H HEPA with PTFE membrane
- Wet & dry function (optional) through liquid level detection mechanisms

TECHNICAL DATA		CA Prima 2PS	CA Prima 3M
Voltage-Frequency	V-phase-Hz	230-1-50/60*	230-1-50/60*
Max. power	W-Hp	2000	3000
Motor	n./type	2/double stage bypass	3/double stage bypass
Vacuum	mmH ₂ O	2100	2100
Air flow rate	cu.m./h	374	530
Tank volume	l	40	60
Filtering surface	sq.cm	19500	19500
Noise level	dB	72	73
Machine dimensions (Lxhxa)	mm	610x1150x850	640x1320x870
Net weight	Kg	63	85

*other voltages available upon request

The CA Cube range is made up of three industrial vacuum cleaner models able to offer maximum results in a minimum of space. They're powerful vacuum cleaners, yet compact and easy to handle and move. The industrial wet & dry vacuum cleaners in the CA Cube range are distinguished by offering high performance while maintaining an excellent quality-price ratio.

CA Cube 20 is equipped with a tangential motor with two-stage tapered fan to offer high vacuum capacity lasting more than 1500 hours.

The coaxial turbine with induction motor installed on the CA Cube 30 and CA Cube 40 models guarantees constant service great performance and durability.

The CA Cube series of industrial vacuum cleaners is the ideal solution for use in small spaces, both inside and outside industrial, handicraft and automotive environments, logistics warehouses and large-scale retailing.



KEY ELEMENTS

- Removable tank to make it easier to empty and transport
- Manual filter shaker with convenient knob located on tank.
- High-efficiency two-stage tangential suction motor designed for extended use
- Large rear wheels
- Braked front wheels
- The manometer indicates the filter saturation level and need to clean it
- A float blocks the vacuum when the liquid in the tank reaches maximum level
- L-Class polyester cylindrical filter as standard
- Filters available in various classes (optional): Class L / Class M / Class H HEPA with PTFE membrane



TECHNICAL DATA		CA Cube 20	CA Cube 30	CA Cube 40
Voltage-Frequency	V-phase-Hz	230-1-50/60	230-1-50 *	400-3-50 *
Max. power	W-Hp	1500 - 2	2200 - 3	3000 - 4
Motor	n./type	1/double stage tangential bypass		-
Turbine	type	-	Coaxial induction	Coaxial induction
Vacuum	mmH ₂ O	3000	3200	3200
Air flow rate	cu.m./h	240	350	350
Tank volume	l	77	77	77
Filtering surface	sq.cm	5000	5000	5000
Noise level	dB	72	70	70
Machine dimensions (Lxhxa)	mm	530x1300x600	530x1300x600	530x1300x600
Net weight	Kg	42	65	68

* other voltages available upon request

The industrial vacuum cleaners in the CA TO range are equipped with a turbine installed in a horizontal position, a characteristic that allows turbine performance to be increased and its life extended. The coaxial turbine with induction motor delivers powerful vacuum, constant service and great performance and durability and doesn't require maintenance.

The all-steel structure of CA TO vacuum cleaners is designed to make them robust and resistant, so they're suitable for working in all the most demanding work environments, like factories, workshops and warehouses.



KEY ELEMENTS

- Completely maintenance free
- Constant service
- Robust frame
- Braked wheels
- Handy accessory basket
- The turbine always stays in place: there's no need to lift it to access the filter
- The tangential nozzle creates a vortex in the incoming dust. It helps keep the filter clean
- Internal cyclone cone to further protect the filter from dust and debris
- The independent filter cleaning mechanism makes it vibrate continuously during use. Convenient filter shaker knob located on tank
- The manometer indicates the filter saturation level and need to clean it
- Window for checking the lower tank fill level
- L-Class polyester radial filter as standard
- Filters available in various classes (optional): Class L / Class M / Class H HEPA with PTFE membrane
- Wet & dry function (optional) through liquid level detection mechanisms



TECHNICAL DATA		CA TO 30 M	CA TO 40 M
Voltage-Frequency	V-phase-Hz	230-1-50 *	400-3-50 *
Max. power	W-Hp	2200 - 3	3000 - 4
Turbine	type	Coaxial induction - single stage	Coaxial induction - single stage
Vacuum	mmH ₂ O	3200	3200
Air flow rate	cu.m./h	350	350
Tank volume	l	60	60
Filtering surface	sq.cm	19500	19500
Noise level	dB	71	71
Machine dimensions (Lxhxa)	mm	630x1550x860	630x1550x860
Net weight	Kg	94	94

*other voltages available upon request

The industrial vacuum cleaners in the CA TEC range are equipped with induction coaxial turbines located at the rear for performance and durability. The rear position of the turbine allows the use of larger two-stage turbines for greater vacuum power and air flow rate.

The steel frame and structure make CA TEC vacuum cleaners robust and resistant. But they're also extremely easy to handle and move.

CA TEC industrial vacuum cleaners are essential equipment for a wide variety of industrial applications and for heavy duty work that requires powerful vacuum and air flow rate. The CA TEC series is particularly recommended for environments in the industrial, automotive, logistics and handicraft sectors



KEY ELEMENTS

- The rear position of the turbine allows the use of larger two-stage turbines for greater vacuum power and air flow rate
- Two-stage turbine for greater vacuum and air flow rate
- The container compartment protects the turbine against external elements and acts as an acoustic barrier, reducing excess noise
- Steel frame and structure
- Handy accessory basket
- Large wheels for transporting the vacuum cleaner on any surface
- Brakes to immobilize the machine
- Convenient handle for releasing the lower tank, which is removed easily on its wheels
- CA TEC 75P, CA TEC 75P LP and CA TEC 75S are equipped with manual filter shaker for cleaner filters
- The tangential nozzle creates a vortex in the incoming dust and helps keep the filter clean
- Internal cyclone cone to further protect the filter from dust and debris
- CA TEC 75P and CA TEC 75P LP are vacuum cleaners equipped with parallel two-stage turbine to generate greater air flow rate
- CA TEC 75S and CA TEC 75S SA are vacuum cleaners equipped with two-stage turbine in series to generate greater vacuum for materials with high specific weight
- CA TEC 75P LP is a vacuum cleaner equipped with Longopac system, which consists of a continuous bag for collecting and removing material safely. The dust is collected in a robust, resistant, plastic bag with three layers. The bag is closed externally for removal without dispersing the dust into the environment. The entire collection system can easily be interchanged with the standard lower tank
- L-Class polyester radial filter as standard
- Filters available in various classes (optional): Class L / Class M / Class H HEPA with PTFE membrane
- Wet & dry function through liquid level detection mechanisms (optional for all models excluding CA TEC 75P LP).



TECHNICAL DATA		CA TEC 75P	CA TEC 75P LP	CA TEC 75S	CA TEC 75S SA
Voltage-Frequency	V-phase-Hz	400-3-50 *	400-3-50 *	400-3-50 *	400-3-50 *
Max. power	W-Hp	5000 - 7,5	5000 - 7,5	5000 - 7,5	5000 - 7,5
Turbine	type	Coaxial induction - double stage parallel	Coaxial induction - double stage parallel	Coaxial induction - double stage in series	Coaxial induction - double stage in series
Vacuum	mmH ₂ O	3600	3600	5100	5100
Air flow rate	cu.m./h	620	620	400	400
Tank volume	l	100	100	100	100
Type of collection	-	Tank	Longopac	Tank	Tank
Filtering surface	sq.cm	19500	19500	19500	19500
Filter shaker	-	Manual	Manual	Manual	Automatic
Noise level	dB	70	70	70	70
Machine dimensions (LxHxA)	mm	650x1300x1500	650x1300x1500	650x1300x1500	660x1100x1500
Net weight	Kg	165	165	165	158

* other voltages available upon request

CA X-Vactor

CA X-Vactor is a range of industrial vacuum cleaners suitable for intensive dust management. These vacuum cleaners have been designed to remove lots of dust quickly and efficiently.

All aspects of form and function in the CA X-Vactor range have been designed to provide effective and reliable dust vacuum so as to maximize efficiency and minimize downtime. These vacuum cleaners are essential for keeping work sites and environments safe, clean and free of dangerous dust.

The vacuum cleaners in the CA X-Vactor range are perfect for work sites and use in combination with machines for floor treatment in the industrial, health, handicraft and automotive sectors, as well as transport and logistics.



KEY ELEMENTS

- The tangential nozzle on X-Vactor vacuum cleaners creates a vortex in the incoming dust to help keep the filter clean. It also has a swing check valve that keeps the dust inside the machine, preventing dispersion into the environment
- New flow reversal mechanism for the X-Vactor range that allows effective filter cleaning: The air flow of the motors is channelled through the filter to blow dust out from the surface of the filter and restore efficient vacuum and filtration
- Manual tools can be connected to the CA X-Vactor Cyclone Dry vacuum cleaner for removing dust directly at the source. The vacuum function is automatically activated and deactivated through the tool
- CA X-Vactor Cyclone Dry is equipped with a double wall tank: the dust enters between the two wall levels, creating a cyclone that helps keep the filter cleaner
- Filters available in various classes (optional): Class L / Class M / Class H HEPA with PTFE membrane
- CA X-Vactor Cyclone Dry is equipped with a kit complete with 40 mm diameter accessories

TECHNICAL DATA		CA X-Vactor Cyclone Dry
Voltage-Frequency	V-phase-Hz	230-1-50/60*
Max. power	W-Hp	1200
Motor	n./type	1/double stage bypass
Vacuum	mmH ₂ O	2500
Air flow rate	cu.m./h	210
Type of collection	-	Single bag
Filtering surface	sqm	1000
Noise level	dB	70
Machine dimensions (Lxhxa)	mm	540x600x1120
Net weight	Kg	20

*other voltages available upon request

CA Atex industrial vacuum cleaners are certified to operate in areas where maximum operational safety is required. Explosion-proof and ATEX-certified for dust zone 22, these vacuum cleaners are essential to minimize the risk of explosions in potentially hazardous atmospheres and have been designed to vacuum dust with low risk of explosion.

Therefore, they can be safely used in bakeries, chemical-pharmaceutical sector, flour and grain mills, cereals and wood pellet warehouses, metallurgical companies and mines. And generally, in environments where electrostatically charged dusts are present.



KEY ELEMENTS

- Essential vacuum cleaners to minimize the risk of explosions in potentially dangerous environments
- Very quiet vacuum cleaners
- Explosion proof ATEX certified for dust Zone 22, a place in which an explosive atmosphere in the form of a cloud of combustible dust in air is not likely to occur in normal operation but, if it does occur, will persist for a short period only
- The good mobility offered by the large diameter wheels allows the use of vacuum cleaners even in confined spaces
- The large filtration surface area and the large air flow allow to work in the presence of large amounts of dust.
- The filter has an above-average life span due to presence of the separator cyclone and the tangential inlet
- The possibility to install numerous accessories makes these vacuum cleaners extremely versatile and therefore suitable to be used in various applications.
- Tanks and filter chamber are produced in AISI 304 stainless steel
- The tank can be uncoupled with a handle and easily moved thanks to its four castor wheels
- Internal cyclone cone to further protect the filter against dust and debris.
- The special coaxial turbine with induction motor configuration offers great durability
- Equipped with antistatic class L star-shaped filters
- Rear wheels with brakes, to secure the unit in place
- The tangential vacuum inlet creates a vortex of the incoming dust helping to keep the filter clean
- Filter shaker, the autonomous filter cleaning mechanism makes it vibrate continuously during use. Practical filter shaker knob positioned on the tank



TECHNICAL DATA		CA ATEX22 30 XS	CA ATEX22 40 M	CA ATEX22 40 L
Voltage-Frequency	V-phase-Hz	230-1-50*	400-3-50/60*	400-3-50*
Max. power	W-Hp	2200 - 3	3000 - 4	3000 - 4
Turbine	type	Coaxial induction single stage	Coaxial induction single stage	Coaxial induction single stage
Vacuum	mmH ₂ O	3200	3200	3200
Air flow rate	cu.m./h	350	350	350
Tank volume	l	30	60	100
Type of collection	l	Tank	Tank	Tank
Filtering surface	sqm	13000	19500	19500
Noise level	dB	71	71	71
Machine dimensions (LxHxA)	mm	660x1300x600	630x1550x860	630x1750x860
Net weight	Kg	60	94	98

* other voltages available upon request

The CA Oil range of vacuum cleaners has been designed to vacuum oil and lubricants and mixtures of chips and coolants. They're essential vacuum cleaners for all turning and metal processing operations, as well as computer numerical control (CNC) centers.

CA Oil vacuum cleaners can separate chips from oil and lubricants, so they can be recycled and reused. They're also structurally very resistant to corrosive oils and abrasive particles.

CA Oil vacuum cleaners are particularly recommended for environments in the industrial, automotive, logistics, transport and handicraft sector



KEY ELEMENTS

- Frame and structure made entirely of steel for resistance to abrasion and stress
- The components and structure can stand up to corrosion caused by oil and industrial lubricants
- The evacuation pump on the CA Oil 40 XL vacuum cleaner empties the liquid content of the tank into the desired container for recycling and reuse
- The chip separator on the CA Oil 2 L separates the solid components from the liquid, so it can be sent directly for disposal or recycling
- The mechanical float device on the CA Oil 2 L vacuum cleaner blocks the vacuum when the liquid in the tank reaches maximum level. The CA Oil 40 XL is equipped with an electronic float
- The drainage hose facilitates emptying operations on CA Oil vacuum cleaners
- Polyester cylindrical filter as standard for CA Oil 2 L
- Nylon chip separator filter as standard for CA Oil 40 XL



TECHNICAL DATA		CA Oil 2 L	CA Oil 40 XL
Voltage-Frequency	V-phase-Hz	230-1-50/60 *	400-3-50 *
Max. power	W-Hp	2400	3000-4
Motor	no./type	2/double stage bypass	-
Turbine	type	-	Coaxial induction
Vacuum	mmH ₂ O	2500	3200
Air flow rate	cu.m./h	430	350
Tank volume	l	100	120
Type of collection	-	Tank + Chip separator	Tank + Chip separator
Noise level	dB	71	71
Machine dimensions (Lxhxa)	mm	920x1310x660	1240x1680x660
Net weight	Kg	89	168
Evacuation pump	W	-	750

*other voltages available upon request

CA Pak industrial vacuum cleaners have a design concept targeted towards maximizing the recovery volume, for collecting large quantities of materials. They are top-loading vacuum cleaners with vacuum at the base and ensure complete filling of the tank.

CA Pak vacuum cleaners compact the vacuumed materials in the tank and are therefore ideal for removing and compacting bulky materials like production waste.

CA Pak is essential equipment for various environments such as packing activities, textiles and floor treatment applications. It is therefore particularly suitable for the industrial, public, automotive and logistics sectors, transport, handicraft and cleaning contractors.



KEY ELEMENTS

- The powerful tangential motors deliver an unbeatable air flow rate
- Tangential motors located at the base of the machine to maximize the useful capacity of the tank and compact the incoming materials
- Robust structure made entirely of steel, to stand up to all the most difficult work environments
- The waste air filter provides additional filtration. It can be HEPA (optional)
- Two vacuum nozzles so the vacuum cleaner can be used by one or two operators simultaneously
- Two large filters: main polyester cartridge filter (class M) with 35500 sq.cm. filtering surface. Non-woven fabric pocket filter for collecting and disposing of the material recovered. It can be single use or reused
- L-class cartridge output air filters
- Transparent lid for checking the tank fill level

TECHNICAL DATA		CA Pak 3 L
Voltage-Frequency	V-phase-Hz	230-1-50/60 *
Max. power	W-Hp	3300
Motor	no./type	3/double stage tangential bypass
Vacuum	mmH ₂ O	2500
Air flow rate	cu.m./h	500
Tank volume	l	100
Type of collection	l	Collection bag (disposable or reusable)
Filtering surface	sq.cm.	35500
Noise level	dB	74
Machine dimensions (LxHxA)	mm	550x1150x660
Net weight	Kg	50

* other voltages available upon request

Carpet by Comac is the ideal equipment for deep cleaning and removing stains and dirt on fabric covers, upholstery, padding and carpet floor.

Carpet uses the exclusive foam system and high-efficiency vacuum system. In this way, the solution of water and detergent sprayed into the fibers of the fabric is immediately removed by the vacuum action, eliminating the dirt and allowing quick drying. Thanks to Carpet, the fabric surfaces will be like new once more, clean and sanitized.

The compact dimensions and ease of transport make Carpet cleaners perfect for use in the transport sector, on board trains or buses, in car washes, but also on large surfaces, like carpet floors in airports, hotels, cinemas, theaters and conference rooms.



KEY ELEMENTS

- Excellent combination of drying and scrubbing pressure with very limited dimensions
- The convenient brush provided delivers the foam and allows it to be worked even on vertical surfaces before going on to vacuum
- Equipped as standard with a 3 m injection/extraction tube and an ergonomic hand nozzle
- The handy bristle brush for the distribution of the foam is essential to the cleaning of upholstery (optional)
- Wand for cleaning carpet floor or rugs also available as optional accessory
- The 20-l capacity of the detergent solution tank ensures a very long autonomy, given the reduced consumption required by the foam system
- To make the user work easier, the tank can be removed to be emptied
- Recovery tank equipped with the efficient AIR STOP filter which cuts down even the smallest residual foam flakes, preserving the integrity of the suction motor
- Equipped with a practical handle for transportation and winding the hoses
- Bus kit (with 10 m flex hose and tube) and long handle kit available as optional equipment

TECHNICAL DATA		CARPET
Voltage-Frequency	V-phase-Hz	220/240-1-50/60 *
Max. power	W-Hp	1650
Motor	no./type	1-double stage bypass
Vacuum	mmH ₂ O	2200
Air flow	l/s	45
Solution tank	l	20
Recovery tank	l	18
Cable length	m	10
Noise level	dB	73
Machine dimensions (Lxhxa)	mm	640x750x340
Net weight	Kg	20

*other voltages available upon request

Single disc



Comac offers a complete range of professional single disc machines that are perfect for the maintenance, restoration, heavy duty cleaning and polishing of floors. Extremely reliable and versatile, thanks to the vast selection of accessories available, these single disc machines can satisfy even the most specific cleaning needs.

Gearbox **single disc machines**

Single disc machines equipped with gear drive that combine efficiency and versatility with modern ergonomics. They are the ideal solution for daily maintenance, from scrubbing to the treatment of all types of hard floors.



CM43 F



CM43 F DS

Orbital **single disc machines**

Thanks to their orbital and roto-orbital movement, the Comac orbital single disc machines are able to offer outstanding performance. They can work on any type of surface and can tackle even heavy duty and specific cleaning jobs.



CM Mini Orbital



CM43 F Orbital



CM43 Orbital

CLISSE



High speed **single disc machines**

A range of professional single disc machines, both walk-behind and ride-on, designed for polishing at high speeds. Easy to use and equipped with a system for collecting the dust produced, they guarantee a professional result and high productivity.



CM 1500

CM43 F

The CM43 F professional single disc machine from Comac is extremely robust but easy to maintain. Equipped with gear drive and cable-powered, it's the ideal single disc machine for daily maintenance, from scrubbing to treatment on all types of hard floor.

Thanks to the steel frame and polypropylene carter, this professional single disc machine succeeds in combining comfort and control for the operator with efficient performance and exceptional versatility. CM43 F is suitable for heavy duty cleaning of hard and vinyl floors with water, as well as foam or powder cleaning of carpet floors, and for dry polishing of vinyl floors.

CM43 F is the professional single disc machine that's perfect for cleaning contractors and for floors treatments of hotels and in the HoReCa sector in general, as well as also Large-Scale Retailing and Transport.



KEY ELEMENTS

- Single disc machine recommended for routine floor maintenance, heavy duty cleaning of hard and vinyl floors with water, for foam or powder carpet floor cleaning and for dry service such as de-waxing and polishing vinyl floors
- Stainless steel frame and PPL carter
- Powerful motors that ensure excellent washing and polishing results
- Nylon gear box for long life, high reliability and quiet operation (60 dB(A) IEC 704/1)
- The off-set position of the engine ensures a well-balanced weight distribution, which translates into effortless use of the single disc machine for the operator
- Detachable power cord makes transport and maintenance easier
- Ergonomic: the handle can be adjusted to any of the numerous pre-set levels to obtain the most suitable working position
- Double safety system: the single disc machine is activated only when the handlebar levers and the safety button are simultaneously pressed. When the levers are released the single disc machine stops
- Polyethylene tank (optional) with graduated scale and lid. The tank can be removed, without using any tool, for easy filling
- Optional 2 Kg weight for increased scrubbing power
- No maintenance, therefore easy-to-use
- High reliability level, guaranteeing constant productivity



TECHNICAL DATA		CM43 F
Drive	-	3 nylon gears
Working width	mm	430
Pad	mm	430
Brush rotations	rpm	160
Power supply	V/Hz	230/50 *
Solution tank	l	15
Max. power	W-Hp	1100
Net weight	Kg	35
Additional weight	Kg	2
Machine dimensions (LxHxA)	mm	460x1200x560

* other voltages available upon request

CM43 F DS

The CM43 F DS professional single disc machine from Comac is extremely robust but easy to maintain. The two-speed function makes this single disc machine versatile, allowing it to be used for various types of work. The first speed is ideal for daily cleaning and heavy duty maintenance. The second speed makes polishing and crystallization operations easier and quicker. Just one multi-tasking single disc machine that carries out the functions of different machines, with corresponding advantages in terms of convenience and saving. Equipped with gear drive, CM43 F DS is extremely reliable and easy to use.

Thanks to the steel frame and polypropylene carter, this professional single disc machine succeeds in combining comfort and control for the operator with efficient performance and exceptional versatility. CM43 F DS is suitable for heavy duty cleaning of hard and vinyl floors with water, as well as foam or powder cleaning of carpet floors, and for dry polishing of various types of floor.

CM43 F DS is the professional single disc machine that's perfect for cleaning contractors and for floor treatments of hotels and in the HoReCa sector in general, but also Large-Scale Retailing and Transport.



KEY ELEMENTS

- Single disc machine recommended for routine floor maintenance, heavy duty cleaning of hard and vinyl floors with water, for foam or powder carpet floor cleaning and for dry service such as de-waxing and polishing vinyl floors
- Stainless steel frame and PPL carter
- Powerful motors that ensure excellent washing and polishing results
- Steel gear box for long life, high reliability and quiet operation
- The off-set position of the engine ensures a well-balanced weight distribution, which translates into effortless use of the single disc machine for the operator
- Detachable power cord makes transport and maintenance easier
- Ergonomic: the handle can be adjusted to any of the numerous pre-set levels to obtain the most suitable working position
- Double safety system: the single disc machine is activated only when the handlebar levers and the safety button are simultaneously pressed. When the levers are released the single disc machine stops
- Polyethylene tank with graduated scale and lid. The tank can be removed, without using any tool, for easy filling (optional)
- Optional 2 Kg weight for increased scrubbing power
- No maintenance, therefore easy-to-use
- High reliability level, guaranteeing constant productivity



TECHNICAL DATA		CM43 F DS
Drive	-	3 steel gears
Working width	mm	430
Pad	mm	430
Brush rotations	rpm	140/280
Power supply	V/Hz	230/50
Solution tank	l	15
Net weight	Kg	37
Additional weight	Kg	2
Machine dimensions (Lxhxa)	mm	460x1200x560

*other voltages available upon request

The CM Mini Orbital single disc machines are the most compact models in the Comac range and allow you to take advantage of orbital technology, making them perfect for small and hard-to-reach spaces. In fact, these compact orbital floor machines represent the professional solution for cleaning, scrubbing, polishing, and finishing edges, corners, steps, skirting boards, and all difficult-to-treat surfaces in confined spaces.

To offer maximum versatility and adapt to different cleaning needs, the CM Mini Orbital is available in three versions: CM Mini Orbital with a rectangular base, CM Mini Orbital R with a round base, and CM Mini Orbital TR with the shape of precision orbital tools.

Additionally, these "mini" orbital floor machines ensure excellent stability, maneuverability, and a robust yet compact frame that is easy to transport, making them suitable for use anywhere. For this reason, all three versions of the CM Mini Orbital are available in both corded and battery-powered versions, for use even where an electrical outlet is not available or is not within reach.

The oscillating head of the CM Mini Orbital range adapts to all surfaces and works efficiently even on irregular flooring, minimizing effort for the operator.

CM Mini Orbital floor machines are the ideal solution for cleaning, heavy duty maintenance, and floor finishing of marble, stoneware, concrete, terracotta, resin, parquet, and wood floors. Extremely versatile, these ultra-compact orbital floor machines are preferred by cleaning companies and are perfect for use in healthcare, public facilities, Ho.Re.Ca., and large-scale retail environments.



KEY ELEMENTS

- Ultra-compact professional orbital single disc machines, easy to transport
- Compact orbital floor machines recommended for all types of floor maintenance, heavy duty cleaning, and polishing. Essential for finishing edges and corners
- CM Mini Orbital with a rectangular base: designed to easily reach corners and tight spaces
- CM Mini Orbital R with a round base: ideal for effortless cleaning around obstacles and furniture, minimizing operator fatigue
- CM Mini Orbital TR with a precision-shaped base: the most accurate model in the range, designed to reach corners and edges effortlessly
- Effective in all small, hard to reach spaces
- Steel frame and PPL carter
- Equipped with ergonomic grip handle
- Convenient starter button and cable support
- The joint on the handlebars allows all rotations up to 180° sideways and backwards up to 90°



TECHNICAL DATA		CM Mini Orbital E	CM Mini Orbital B	CM Mini Orbital R E	CM Mini Orbital R B
Drive	-	Direct orbital	Direct orbital	Direct orbital	Direct orbital
Working width	mm	250	250	280	280
Pad	mm	250x135	250x135	280x280	280x280
Oscillations	no.	3300	3300	2200	2200
Max. power	W-Hp	165	165	165	165
Net weight	Kg	10	11,7	13	13
Machine dimensions (LxHxA)	mm	120x130x265	120x130x265	300x170x340	300x170x340
Handlebar extensibility from - to	mm	970-1350	970-1350	1000-1380	1000-1380
Power supply	V/Hz	230/50	36	230/50	36
Capacity of Li-ion battery	Ah	-	5	-	5
Autonomy up to	min	-	75	-	75

*other voltages available upon request



Orbital Technology

The CM Mini Orbital series use orbital technology and are therefore extremely versatile, suitable for both heavy duty cleaning and lighter maintenance operations.

The heads of these machines use a micro-orbital movement that exerts a large amount of energy on the floor, enabling uniform and effective results to be obtained in a short time. The effectiveness of the mechanical action of the orbital brush head, combined with the use of specific abrasive pads, makes it possible to reduce and in some cases entirely eliminate the use of detergents.

Circular oscillations of the orbital movement help to increase the stability of the single disc machine making it light, easy to handle and very simple to use.



- The handlebar is released with a practical foot-operated pedal
- Easy to transport thanks to two rear wheels
- Battery-powered versions feature latest-generation lithium batteries, enabling use even where an electrical connection is not available
- Optional "L" accessory kit (available for CM Mini Orbital models) for even easier cleaning of rounded corners, stair risers, and baseboards
- One machine, multiple functions: the orbital system ensures versatility, allowing various floor treatments with dedicated accessories that make this compact orbital floor machine highly adaptable

TECHNICAL DATA		CM Mini Orbital TR E	CM Mini Orbital TR B
Drive	-	Direct orbital	Direct orbital
Working width	mm	325	325
Pad	mm	325x225	325x225
Oscillations	no.	2200	2200
Max. power	W-Hp	165	165
Net weight	Kg	12	12
Machine dimensions (Lxhxa)	mm	215x154x365	215x154x365
Handlebar extensibility from - to	mm	985-1365	985-1365
Power supply	V/Hz	230/50	36
Capacity of Li-ion battery	Ah	-	5
Autonomy up to	min	-	75

*other voltages available upon request

CM43 F orbital

The CM43 F Orbital single disc machine exploits the principle of the roto-orbital system to achieve excellent stability and great ease of use and maneuverability, making it suitable for even the least experienced operators and making physical strength no longer a requisite. The roto-orbital movement also enhances the cleaning results of a regular single disc machine, making CM43 F Orbital particularly recommended for heavy duty cleaning.

CM43 F Orbital ensures exceptional results on any type of floor and is particularly recommended for frequent applications like heavy duty cleaning or scrubbing, de-waxing and crystallization. The CM43 F Orbital Spray version is also perfect for cleaning carpeted floor and rugs thanks to the spray kit for distributing water or detergent solution.

CM43 F Orbital is suitable for frequent applications like heavy duty cleaning or scrubbing, de-waxing and crystallization. Extremely versatile, it's the ideal solution for use in healthcare, public and HoReCa sectors, as well as for cleaning contractors and service companies operating in the retail spaces.



KEY ELEMENTS

- Single disc machine recommended for maintenance, heavy duty cleaning, treatments and extraordinary maintenance operations on floors
- CM43 F Orbital is a single disc machine suitable for applications such as heavy duty scrubbing, de-waxing, crystallization, polishing and micro-polishing of marble, stone, cement and wood floors
- CM43 F Orbital Spray is suitable for applications such as heavy duty scrubbing, de-waxing, crystallization, polishing and micro-polishing of marble, stone, cement and wood floors. Thanks to the Spray Kit, it's also particularly suitable for cleaning carpeted floors and rugs
- CM43 F Orbital Spray Kit with pump and adjustable nozzle with switch for two solution spraying modes
- The pump of the CM43 F Orbital Spray Kit uses an intake with filter in the solution tank and an adjustable nozzle
- Two movements in one: roto-orbital together with the natural rotary movement of the disc, which can vary from 0 to 90 rpm, the system generates a constant orbit that allows many passes over the same point very rapidly
- Perfect adhesion to the surface thanks to combining orbital and rotary movements: the working area is always constant and the brush/disc always level with the surface, adhering perfectly
- Forwards and backwards movement and easy swing: the brushing action is effective in every movement: forwards and backwards or swing, always level with the surface.
- Less use of water and detergent: the orbital movement prevents water from being splashed outside the perimeter of the machines. This technology drastically reduces water and detergent consumption
- The reduced water consumption of CM43 F Orbital Spray allows the time needed for drying carpet floor and rugs to be reduced, thereby reducing the risk of mold formation.
- Thanks to CM43 F Orbital Spray, the fibers of carpets and rugs are cleaned and restored thanks to the vibration which removes the dirt particles even from deep down.
- Maximum comfort for users thanks to the roto-orbital movement, which offers great stability, ease of use and maneuverability



TECHNICAL DATA		CM43 F Orbital
Drive	-	Direct orbital
Working width	mm	430
Pad	mm	Ø 430
Oscillations	no.	1400
Brush rotations	rpm	0-90
Power supply	V	230/50
Solution tank	l	15
Max. power	W-Hp	1100
Net weight	Kg	46
Machine dimensions (LxHxA)	mm	450x1130x635

*other voltages available upon request



Orbital Technology

The Comac single disc machines that use orbital technology are extremely versatile, suited both to heavy duty cleaning and lighter maintenance operations.

The heads of these machines use a micro orbital movement that exerts a large amount of energy on the floor, enabling uniform and effective results to be obtained in a short time. The effectiveness of the mechanical action of the orbital brush head, combined with the use of specific abrasive pads, makes it possible to reduce and in some cases entirely eliminate the use of detergents.

Circular oscillations of the orbital movement help to increase the stability of the single disc machine making it light, easy to handle and very simple to use.

- Steel structure and support frame made of stainless steel
- Large rubber wheels for easy transport
- The best ergonomics thanks to the new, more comfortable handle ensuring an even more secure grip in all working conditions. The handle itself features an internal steel reinforcement for more precise maneuverability and greater durability
- Double safety system: the single disc machine is activated only when the handlebar levers and the safety button are simultaneously pressed. When the levers are released the single disc machine stops
- CM43 F Orbital Spray has a three-position dispensing button: continuous, neutral and intermittent dispensing
- Polyethylene tank with graduated scale and lid. The tank can be removed, without using any tool, for easy filling (optional for CM43 F Orbital)
- Option to install the vacuum kit to expand the fields of use: resanding and restoring parquet without generating dust thereby reducing marble smoothing and polishing times
- Side connection cuff for external suction (optional)

TECHNICAL DATA		CM43 F Orbital Spray
Drive	-	Direct orbital
Working width	mm	430
Pad	mm	Ø 430
Oscillations	no.	1400
Brush rotations	rpm	0-90
Power supply	V	230/50
Solution tank	l	15
Solution pump no.	W	1 (32)
Pressure	bar	1,5
Nozzle	no.	1
Max. power	W-Hp	1100
Net weight	Kg	47
Machine dimensions (Lxhxa)	mm	450x1130x635

The roto-orbital movement and weight on the surface make CM43 Orbital Spray a single disc machine particularly recommended for heavy duty work, treatments and extraordinary maintenance operations. Its technical characteristics make it the ideal choice for cleaning contractors and floor specialists who need a powerful single disc machine suitable for every type of treatment.

The high frequency oscillations make CM43 Orbital an extremely stable, very easy to handle single disc machine, despite its weight of 65 Kg. The roto-orbital movement makes using the single disc machine very easy for any operator, optimizing training times and making physical strength no longer a requisite. CM43 Orbital Spray also offers all the advantages of roto-orbital movement such as reduced electrical, water and detergent consumption, as well as achieving superior results in less time compared to a regular single disc machine.

The CM43 Orbital Spray single disc machine ensures exceptional results on any type of floor and is the ideal solution for use in the HoReCa sector as well as for cleaning contractors and service companies operating in retail spaces.



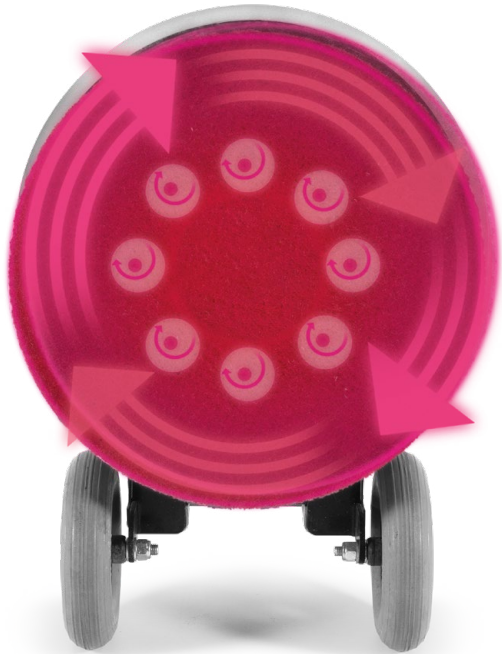
KEY ELEMENTS

- The ideal single disc machine for heavy duty work, treatments and extraordinary maintenance operations on floors
- CM43 Orbital Spray is a single disc machine suitable for applications such as heavy duty scrubbing, de-waxing, crystallization, polishing and micro-polishing of marble, stone, cement and wood floors. Thanks to the Spray Kit, it's also particularly suitable for cleaning carpeted floors and rugs
- Spray Kit with pump and two adjustable nozzles with switch for two solution spraying modes
- The pump of the CM43 Orbital Spray Kit uses an intake with filter in the solution tank and two adjustable nozzles
- Two movements in one: roto-orbital together with the natural rotary movement of the disc, which can vary from 0 to 90 rpm, generating a constant orbit that allows many passes over the same point very rapidly
- Perfect adhesion to the surface thanks to combining orbital and rotary movement: the working area is always constant and the brush/disc always level with the surface, adhering perfectly
- Forwards and backwards movement and easy swing: the brushing action is effective in every movement: forwards and backwards or swing, always level with the surface
- Less use of water and detergent: the orbital movement prevents water from being splashed outside the perimeter of the machines. This technology drastically reduces water and detergent consumption
- The reduced water consumption and the reduced time needed for the carpet or rug to dry, also reduces the risk of mold formation
- The fibers of carpets and rugs are cleaned and restored thanks to the vibration which removes the dirt particles even from deep down
- Maximum comfort for users thanks to the roto-orbital movement, which offers great stability, ease of use and maneuverability



TECHNICAL DATA		CM43 Orbital Spray
Drive	-	Direct orbital
Working width	mm	430
Pad	mm	Ø 430
Oscillations	no.	1400
Brush rotations	rpm	0-90
Power supply	V/hz	230/50
Solution tank	l	15
Solution pump no.	W	1
Pressure	bar	1,5
Nozzle	no.	2
Max. power	W-Hp	1100
Net weight	Kg	65
Additional weight	Kg	17
Machine dimensions (LxHxA)	mm	495x1220x700

* other voltages available upon request



Orbital Technology

The Comac single disc machines that use orbital technology are extremely versatile, suited both to heavy duty cleaning and lighter maintenance operations.

The heads of these machines use a micro orbital movement that exerts a large amount of energy on the floor, enabling uniform and effective results to be obtained in a short time. The effectiveness of the mechanical action of the orbital brush head, combined with the use of specific abrasive pads, makes it possible to reduce and in some cases entirely eliminate the use of detergents.

Circular oscillations of the orbital movement help to increase the stability of the single disc machine making it light, easy to handle and very simple to use.

- Anti-corrosion steel structure
- Large rubber wheels for easy transport
- The brush head can be tilted back 90° to make pad replacement easier
- Quick release of the motor brush head from the chassis and of the 17kg weight. Quick disconnection of electrical system
- The best ergonomics thanks to the new, more comfortable handle ensuring an even more secure grip in all working conditions. The handle itself features an internal steel reinforcement for more precise maneuverability and greater durability
- Double safety system: the single disc machine is activated only when the handlebar levers and the safety button are simultaneously pressed. When the levers are released the single disc machine stops
- Three-position dispensing button: continuous, neutral and intermittent dispensing
- Polyethylene tank with graduated scale and cap. The tank can be removed, without using any tool, for easy filling
- Option to install the vacuum kit to expand the fields of use: resanding and restoring parquet without generating dust, thereby reducing marble smoothing and polishing times
- The low electrical energy absorption of this machine means that it can even be used together with a vacuum cleaner, with both appliances powered by standard mains voltage
- Side connection cuff for external suction (optional)

CM1500

CM1500 V is the high speed single disc machine from Comac that's suitable for restoration and dry polishing work. Extremely easy to handle, it is supplied with a vacuum mechanism for collecting dust in the dedicated container compartment.

Equipped with an exceptional balancing system and gas spring on the handle, the CM1500 V is extremely pleasant to use, with no user-fatigue.

The CM1500 V high speed professional single disc machine from Comac is the ideal solution for service and cleaning contractors operating in hotels, convention centers and for use in the HoReCa, Health, Public, Automotive, Retail and Large-Scale Retailing sectors.



KEY ELEMENTS

- High speed single disc machine recommended for restoration and dry polishing work
- Exceptional balancing system that makes it use extremely pleasant, with no operator fatigue. It also prevents the operator from burning and/or damaging the surface being treated, ensuring results with excellent shine
- Extremely easy to handle thanks to the gas spring on the handle
- The brush conveys the dirt collected by the vacuum system into a collection bag, preventing the dust produced from being dispersed into the environment. The bag is easy to remove and replace
- The direct drive requires no maintenance, allowing significant economic savings over time
- Extremely quiet operation, so it can also be used in environments where discretion and silence are necessary
- The single disc machine is easy to move thanks to the special transportation wheels



TECHNICAL DATA		CM1500 V
Drive	-	Direct Drive
Working width	mm	500
Pad	mm	Ø 500
Brush rotations	rpm	1500
Power supply	V	230/50*
Max. power	W-Hp	1100
Net weight	Kg	35
Machine dimensions (LxHxA)	mm	610x1260x540

* other voltages available upon request



ALLARME INCENDIO

1500W

C

PROFESSIONAL



The range of Comac professional pressure washers was designed to meet the most extreme cleaning needs. They are both hot and cold high pressure machines that offer power, reliability and high manoeuvrability, even in the most difficult conditions.

Comac pressure washers are the perfect combination of professional performance, innovative design, robustness and technological innovation, thus becoming an essential tool for professional cleaning.

Cold pressure washers

Comac's cold pressure washers are compact, easy to handle and robust, offering high performance and excellent versatility. They are power washers with various motorizations and configurations so as to meet the needs of cleaning any environment.



CI C10



CI C15



CI C20



CI C20 EM



CI C30



CI C30 EM



CI C40 EM THERMIC

EURO SHOWERS



Hot pressure washers

Comac's hot pressure washers were designed to meet the most extreme cleaning needs, making them perfect for frequent jobs where high power is required. They are performing, easy-to-handle power washers that can be used in any situation or environment.



CI H5



CI H10



CI H20 EM INOX



CI H30



CI H40 EM INOX



CI H50

ci C10

The CI C10 is a cold pressure washer with compact dimensions but that is high performing. Designed to be practical and easy to use, it is also easy to handle and transport.

The induction motor that the CI C10 is equipped with makes it a professional high-pressure washer that is powerful, reliable, but also quiet and therefore suited to frequent use.

The CI C10 is the ideal pressure washer for cleaning walls, floors, stairs, and outdoor areas in the HoReCa, Wellness, Sports, Retail and Public sectors. It is also a cold high pressure washer perfect for cleaning contractors and, in general, for removing resistant dirt from medium-sized surfaces measuring 40-60 sqm.



KEY ELEMENTS

- Trolley pressure washer with two large wheels that enhance manoeuvrability and transportability
- Soft grip handle for a secure hold
- Powerful induction motor that makes the pressure washer highly performing, efficient and reliable
- Axial 3-piston pump controlled by a wobble plate with a brass head
- Automatic safety valve with pressure shut-off at pump head
- Single-phase electric induction motor with heat protection that guarantees maximum efficiency and durability
- Direct detergent suction and built-in practical 1.4 L tank
- Standard floor brush to remove even stubborn dirt from horizontal surfaces
- Stop&Go: when the machine is temporarily idle, it stops so as to optimize consumption and reduce waste
- Wide range of accessories: gun with protection and Swivel coupling, lance with rotating nozzle, lance with adjustable jet
- 10-metre reinforced high pressure tube
- Accessory holder



TECHNICAL DATA		CI C10
Max pressure	bar/psi	150/2200
Max flow rate	l/h	450
Type	-	cold water
Power consumption	KW	2,1
Power supply	V/Hz	220-240/50
Motor	type/hp	single-phase electric induction
Rotation speed	rpm	2800
Pump	type	with wobble plate
Pump head	material	brass
Net weight	Kg	18,5
Machine dimensions (Lxhxw)	mm	280x650x240

The CI C15 professional cold high pressure washer has been designed for the most demanding users who want to combine power and high performance on an extremely compact machine.

CI C15 is a high-pressure cleaner that is easy to use and move thanks to the ergonomic handle and its rubber wheels. Developed in a vertical position to be practical and maneuverable, the CI C15 can also be stored horizontally to make it even more handy.

This high-performing and powerful pressure washer is perfect for professional cleaning, even frequent, in the automotive, industrial, logistics and handicraft sectors. But it is also the perfect cold high-pressure washer for cleaning professionals looking for performance and convenience in a single machine.



KEY ELEMENTS

- Trolley pressure washer with two rubber wheels that enhance manoeuvrability and transportability
- Ergonomic handle designed to facilitate transport
- Powerful induction motor that makes the pressure washer highly performing, efficient and reliable
- Axial 3-piston pump controlled by a wobble plate with a brass head
- Automatic safety valve with pressure shut-off at pump head
- Single-phase electric induction motor with heat protection that guarantees maximum efficiency and durability
- Adjustable pressure
- Direct detergent suction and built-in practical 2 L tank
- Stop&Go: when the machine is temporarily idle, it stops so as to optimize consumption and reduce waste
- Comes with professional accessories: gun with protection and Swivel coupling, lance with interchangeable nozzle
- 10mt reinforced high pressure tube
- Built-in accessory holder on machine



TECHNICAL DATA		CI C15
Max pressure	bar/psi	180/2600
Max flow rate	l/h	600
Type	-	cold water
Power consumption	KW	3,1
Power supply	V/Hz	220-240/50
Motor	type/hp	single-phase electric induction
Rotation speed	rpm	2800
Pump	type	with wobble plate
Pump head	material	brass
Net weight	Kg	32
Machine dimensions (Lxhxw)	mm	390x900x380

ci C20

The CI C20 single-phase cold pressure washer stands out for its appealing, robust design. Featuring compact dimensions and extreme manoeuvrability, it moves easily, even around obstacles or on stairs.

The CI C20 is a high-pressure washer that is extremely manoeuvrable and easy to use. Its innovative V-shaped handlebars are wide and ergonomic to facilitate grip during use.

High performing and powerful, the CI C20 is a professional cold pressure washer suited to working in even the mostly stressful conditions for long periods. Thanks to its high pressure and notable flow rate, this power washer is able to best satisfy the cleaning needs of the automotive, industrial, logistics and handicraft sectors.



KEY ELEMENTS

- Trolley cold pressure washer with two large wheels that enhance manoeuvrability and transportability
- New concept ergonomic handlebars with a handgrip designed to facilitate the use of the pressure washer
- Powerful induction motor that makes the pressure washer highly performing, efficient and reliable
- The low motor rotation speed of only 1450 rpm ensures high durability over time, even during extended sessions
- Ceramic 3-piston pump with crank-rod system and brass head for high performance
- Automatic safety valve with pressure shut-off at pump head
- Single-phase electric induction motor with heat protection that guarantees maximum efficiency and durability
- Adjustable pressure
- Built-in manometer
- Built-in adjustable detergent suction
- Inspectionable water feed filter
- Stop&Go: when the machine is temporarily idle, it stops so as to optimize consumption and reduce waste
- Comes with professional accessories: gun with protection and Swivel coupling, lance with interchangeable nozzle
- 10-metre reinforced high pressure tube
- Built-in accessory holder on machine



TECHNICAL DATA		CI C20
Max pressure	bar/psi	150/2200
Max flow rate	l/h	630
Type	-	cold water
Power consumption	KW	3,0
Power supply	V/Hz	230/50
Motor	type/hp	single-phase electric induction
Rotation speed	rpm	1450
Pump	type	ceramic piston with crank-rod system
Pump head	material	brass
Net weight	Kg	43,6
Machine dimensions (Lxhxw)	mm	800x980x470



The CI C20 EM trolley cold pressure washer stands out for being compact and robust. It is the professional high-pressure washer that offers the perfect combination of high technical performance with user-friendliness and easy maintenance.

Equipped with a trolley that has a robust, resistant structure thanks to its large back wheels with rubber treads and a practical aluminium handle, the CI C20 EM is solid but also agile and easy to move.

Its excellent performance makes the CI C20 EM a professional pressure washer that is ideal for removing the most stubborn, caked on dirt and for frequent, extended jobs. It is therefore the perfect power washer for the handicraft, automotive, industrial, food, and agricultural sectors.



KEY ELEMENTS

- Pressure washer with robust trolley and two large back wheels with wide rubber treads that facilitate manoeuvrability and transportability
- Painted steel frame and practical handle to facilitate movement
- Powerful induction motor that makes the pressure washer highly performing, efficient and reliable
- The single-phase electric induction motor with heat protection guarantees high reliability and allows the power washer to work uninterrupted for hours without breaks, withstanding even transient power spikes or surges optimally
- Ceramic 3-piston pump with crank-rod system and brass head for high performance
- Automatic safety valve with pressure shut-off at pump head
- Adjustable pressure
- Built-in manometer
- Built-in adjustable detergent suction
- Practical built-in 3-litre detergent tank
- Inspectionable water feed filter
- Stop&Go: when the machine is temporarily idle, it stops so as to optimize consumption and reduce waste
- Comes with professional accessories: gun with protection and Swivel coupling, lance with interchangeable nozzle
- Black nozzle for low pressure
- Red nozzle for high/low pressure and straight jet – 0°
- Yellow nozzle for high/low pressure and fan jet – 15°
- Green nozzle for high/low pressure and fan jet – 25°
- White nozzle for high/low pressure and fan jet – 40°
- 10-metre reinforced high pressure tube
- Accessory holder and tube storage on the back



TECHNICAL DATA		CI C20 EM
Max pressure	bar/psi	150/2200
Max flow rate	l/h	630
Type	-	cold water
Power consumption	KW	3,0
Power supply	V/Hz	230/50
Motor	type/hp	single-phase electric induction
Rotation speed	rpm	1450
Pump	type	ceramic piston with crank-rod system
Pump head	material	brass
Net weight	Kg	40,6
Machine dimensions (Lxhxw)	mm	670x900x490

The CI C30 is the three-phase cold pressure washer that stands out for its compactness and appealing design. It is also robust, guaranteeing high performance, reliability and durability over time.

Its smaller size manoeuvrability make this high-pressure washer extremely comfortable and practical without giving up excellent performance. The CI C30 is also easy to use, thanks to the practical and innovative V-shaped handlebars, which facilitate grip during use.

The CI C30 is the professional pressure washer that is perfect for continuous, complex use. Thanks to its innovative technology and its high quality components, it has the ideal high pressure for the cleaning needs of the automotive, industrial, logistics and handicraft sectors.



KEY ELEMENTS

- Trolley pressure washer with two large wheels that enhance manoeuvrability and transportability
- New concept ergonomic handlebars with a handlegrip designed to facilitate the use of the pressure washer
- Powerful induction motor that makes the pressure washer highly performing, efficient and reliable
- The low motor rotation speed of only 1450 rpm ensures high durability over time, even during extended sessions
- Ceramic 3-piston pump with crank-rod system and brass head for high performance
- Automatic safety valve with pressure shut-off at pump head
- Three-phase electric induction motor with heat protection that guarantees maximum efficiency and durability
- Adjustable pressure
- Built-in manometer
- Built-in adjustable detergent suction
- Inspectionable water feed filter
- Stop&Go: when the machine is temporarily idle, it stops so as to optimize consumption and reduce waste
- Comes with professional accessories: gun with protection and Swivel coupling, lance with interchangeable nozzle
- 10-metre reinforced high pressure tube
- Built-in accessory holder on machine



TECHNICAL DESCRIPTION		CI C30
Max pressure	bar/psi	230/3300
Max flow rate	l/h	900
Type	-	cold water
Power consumption	KW	7,4
Power supply	V/Hz	400/50
Motor	type/hp	three-phase electric induction
Rotation speed	rpm	1450
Pump	type	ceramic piston with crank-rod system
Pump head	material	brass
Net weight	Kg	52,2
Machine dimensions (Lxhxw)	mm	800x980x470

The CI C30 EM is a trolley cold pressure washer designed to be compact yet robust. It is a professional power washer capable of offering the perfect combination of performance, user-friendliness and easy maintenance.

The CI C30 EM's robust metal trolley and two large wheels with rubber treads make it a solid high-pressure washer that is still easy to move.

High reliability and excellent performance allow the CI C30 EM to be the ideal professional cold pressure washer for intensive use and long jobs. It is therefore perfect for the food, agricultural, industrial, automotive and handicraft sectors.



KEY ELEMENTS

- Pressure washer with robust trolley and two large back wheels with wide rubber treads that facilitate manoeuvrability and transportability
- Painted steel frame and practical handle to facilitate movement
- Powerful induction motor that makes the pressure washer highly performing, efficient and reliable
- The three-phase electric induction motor with heat projection guarantees high reliability and allows the power washer to work uninterrupted for hours without breaks, withstanding even transient power spikes or surges optimally
- Ceramic 3-piston pump with crank-rod system and brass head for high performance
- Automatic safety valve with pressure shut-off at pump head
- Adjustable pressure
- Built-in manometer
- Flanged adjustment valve
- Built-in adjustable detergent suction
- Practical built-in 3-litre detergent tank
- Inspectionable water feed filter
- Comes with professional accessories: gun with protection and Swivel coupling, lance with interchangeable nozzle
- Black nozzle for low pressure
- Red nozzle for high/low pressure and straight jet – 0°
- Yellow nozzle for high/low pressure and fan jet – 15°
- Green nozzle for high/low pressure and fan jet – 25°
- White nozzle for high/low pressure and fan jet – 40°
- 10-metre reinforced high pressure tube
- Accessory holder and tube storage on the back



TECHNICAL DESCRIPTION		CI C30 EM
Max pressure	bar/psi	230/3300
Max flow rate	l/h	900
Type	-	cold water
Power consumption	KW	7,4
Power supply	V/Hz	400/50
Motor	type/hp	three-phase electric induction
Rotation speed	rpm	1450
Pump	type	ceramic piston with crank-rod system
Pump head	material	brass
Net weight	Kg	54,8
Machine dimensions (Lxhxw)	mm	670x900x490

The CI C40 EM THERMIC is the cold pressure washer with a combustion engine designed to guarantee maximum results, even in the most extreme conditions. The powerful Rato motor makes it the professional high-pressure washer that is perfect for jobs where you cannot connect to the mains electricity, therefore ideal for continuous jobs.

Equipped with a robust ergonomic frame that offers excellent protection for the mechanical parts, the CI C40 EM THERMIC is also compact and easy to transport. At the same time, the inflatable tires and wide rubber treads guarantee extreme manoeuvrability for the pressure washer, even over uneven surfaces.

Powered by gasoline, the CI C40 EM THERMIC is a robust pressure washer that is perfect for heavy, continuous use. It is therefore the ideal solution for the most demanding cleaning in the agricultural, industrial, or building sectors, or for all situations in which high performance and manoeuvrability is required.



KEY ELEMENTS

- Pressure washer with robust trolley, two inflatable wheels and anti-vibration feet that facilitate manoeuvrability and transportability
- Corrosion-resistant painted steel frame and practical handle to facilitate movement
- Powerful Rato motor with valves at the head, low operating temperature and high reliability, durability and oil savings, making the pressure washer perfect for professional applications
- Motor with oil sensor and inspectionable oil levels
- Drain plugs and holes to facilitate maintenance and oil changes
- Ceramic 3-piston pump with crank-rod system and brass head for high performance
- Automatic accelerator regulator
- Automatic safety valve
- Adjustable pressure
- Heat valve
- Built-in detergent suction
- Inspectionable water feed filter
- Practical built-in 2.8-litre detergent tank
- Anti-vibration feet to reduce vibrations and noise level
- Comes with professional accessories: gun with protection and Swivel coupling, lance with rotating nozzle, lance with interchangeable nozzle
- Black nozzle for low pressure – 65°
- Red nozzle – straight jet – 0°
- Yellow nozzle – fan jet – 15°
- White nozzle – fan jet – 40°
- 10-metre reinforced high pressure tube
- Accessory holder and tube storage on the back

TECHNICAL DESCRIPTION		CI C40 EM THERMIC
Max pressure	bar/psi	280/4060
Max flow rate	l/h	960
Type	-	cold water
Motor	type/hp	Rato/10,2 combustion
Rotation speed	rpm	3400
Pump	type	ceramic piston with crank-rod system
Pump head	material	brass
Net weight	Kg	58,4
Machine dimensions (Lxhxw)	mm	900x900x530

CI H5 is the professional hot water pressure washer designed for those looking for reliable performance in a compact, functional, versatile, and easy-to-use solution. Equipped with a single-phase induction electric motor with thermal protection, CI H5 ensures efficiency and continuity even during frequent and demanding cleaning cycles. It's the perfect high-pressure machine for removing stubborn dirt from surfaces, equipment, and vehicles in professional environments.

CI H5 features a design focused on strength and durability: its robust frame is combined with a vertical boiler with a double coil, which allows fast and consistent water heating. It also includes durable wheels and an ergonomic handle for easy movement over uneven surfaces, making it practical and easy to handle in any working condition.

CI H5 is the hot water pressure washer that offers a practical and cost-effective solution for the craft, agricultural, industrial, automotive, and construction sectors, where power, reliability, and ease of use are essential to achieve professional cleaning results, every day.



KEY ELEMENTS

- Pressure washer equipped with two rear rubber wheels to ensure greater maneuverability and easy transport
- Sturdy and durable handle designed to make transport easier, even on rough terrain
- Reinforced steel base frame and diesel tank made of impact-resistant plastic
- Powerful 2-pole single-phase electric motor with heat protection that makes the pressure washer highly performing, efficient and reliable
- Three hardened stainless steel axial pistons driven by a wobble plate for high-level performance
- Brass pump head with a double seal system for increased durability
- Automatic bypass safety valve with pressure release in the pump head
- Safety pressure switch to turn off the hot box if there is no water inside
- Vertical boiler with double coil to ensure effective and long-lasting heating
- Burner feeding system with screw drive powered by an independent electric motor
- Gear diesel pump driven by an independent electric motor
- Boiler ignition switch with thermostat for water temperature regulation
- Safety valve
- 15-liter fuel oil tank
- Inspectionable water feed filter
- Comes with professional accessories: gun with protection and Swivel coupling, wand with high/low pressure head, foam lance for detergent in low pressure
- 1/4" MEG-type nozzle with 15° flat jet
- 10-meter reinforced high pressure tube
- Hose reel ready



TECHNICAL DESCRIPTION		CI H5
Max pressure	bar/psi	160/2320
Max flow rate	l/h	500
Type	-	hot water
$\Delta^{\circ}t$	$^{\circ}C$	44
Power consumption	KW	2,7
Power supply	V/Hz	230/50
Motor	type/hp	single-phase electric with heat protection
Rotation speed	rpm	2800
Pump	type	with wobble plate (3 hardened stainless steel axial pistons)
Pump head	material	brass
Net weight	Kg	62
Machine dimensions (l x h x w)	mm	720x750x410

The CI H10 is a professional hot pressure washer equipped with a single-phase electric motor capable of guaranteeing excellent performance in more difficult environments. Equipped with a solid, robust structure, this high-pressure washer was designed for professional use. However, the CI H10 is also very compact and easy to handle, thanks to the two back wheels with rubber treads and the pivoting front wheel.

One of the CI H10's key features is the painted steel vertical hot box equipped with a spiral cooling system for the heater, which is switched on by a separate electric motor.

Thanks to the combination of power, pressure and flow rate, this professional hot pressure washer is perfect for deep cleaning environments in the automotive, handicraft, industrial, building and agricultural sectors.



KEY ELEMENTS

- Pressure washer with two large back wheels with rubber treads and a front pivoting wheel that facilitate manoeuvrability and transportability
- Practical ergonomic handle to facilitate movement
- Powerful single-phase electric motor with heat protection that makes the pressure washer highly performing, efficient and reliable
- Ceramic 3-piston pump with crank-rod system and brass head for high performance
- Automatic safety valve with pressure shut-off at pump head
- Painted steel vertical hot box equipped with a spiral cooling system for the heater, which is switched on by a separate electric motor, double coil and fireproof cement
- Safety pressure switch to turn off the hot box if there is no water inside
- Time delay panel to switch off the hot box
- Adjustable pressure
- Thermostat
- 22-litre fuel oil tank with drain plug
- Built-in detergent suction
- Practical built-in 4-litre detergent tank
- Inspectionable water feed filter
- Stop&Go: when the machine is temporarily idle, it stops so as to optimize consumption and reduce waste
- Comes with professional accessories: gun with protection and Swivel coupling, wand with high/low pressure head
- ¼" MEG type nozzle with flat jet
- 10-metre reinforced high pressure tube



TECHNICAL DESCRIPTION		CI H10
Max pressure	bar/psi	150/2200
Max flow rate	l/h	600
Type	-	hot water
$\Delta^{\circ}t$	$^{\circ}C$	55
Power consumption	KW	3,0
Power supply	V/Hz	230/50
Motor	type/hp	single-phase electric with heat protection
Rotation speed	rpm	1450
Pump	type	ceramic piston with crank-rod system
Pump head	material	brass
Net weight	Kg	82
Machine dimensions (lhxwx)	mm	1000x820x570

The CI H20 EM INOX is a professional hot pressure washer featuring a compact structure and a robust stainless steel body. It is also very easy to handle, thanks to the four large wheels that facilitate the transport of this high-pressure washer.

CI H20 EM INOX is equipped with a powerful single-phase electric motor with magnetohermic protection that makes this hot water pressure washer performing, powerful and reliable in any condition of use.

Equipped with a high efficiency stainless steel hot box powered by fuel oil, the CI H20 EM INOX can supply hot water with a temperature of up to 150°C, therefore making it perfect for removing even the most stubborn dirt.

The components and technologies installed on this professional pressure washer allow it to guarantee a high performance and great durability over time. Because of this, the CI H20 EM INOX is therefore the perfect for the food, handicraft, industrial, and transport sectors.



KEY ELEMENTS

- Hot pressure washer with four large wheels with rubber treads that facilitate manoeuvrability and transportability
- Robust structure with stainless steel cover (AISI 430)
- Powerful single-phase electric motor with thermal-magnetic protection that makes the pressure washer highly performing, efficient and reliable
- Ceramic 3-piston pump with crank-rod system and brass head for high performance
- Automatic safety valve
- 3 24V pressure switches
- High efficiency stainless steel (AISI 430) hot box powered by fuel oil
- Adjustable pressure
- 150°C thermostat
- Switch-off system for: micro leaks, no water or if the motor overheats
- Low-voltage instrument panel
- Error, fuel oil, voltage and stop warning lights
- 24-litre fuel oil tank
- Built-in adjustable detergent suction
- Inspectionable water feed filter
- Comes with professional accessories: gun with protection and Swivel coupling, wand with high/low pressure head
- 1/4" MEG type nozzle with flat jet
- 10-metre reinforced high pressure tube
- Accessory holder and tube storage on the side



TECHNICAL DESCRIPTION		CI H20 EM INOX
Max pressure	bar/psi	150/2200
Max flow rate	l/h	600
Type	-	hot water
Δ°t	°C	55
Power consumption	KW	3,0
Power supply	V/Hz	230/50
Motor	type/hp	single-phase electric with thermal-magnetic protection
Rotation speed	rpm	1450
Pump	type	ceramic piston with crank-rod system
Pump head	material	brass
Net weight	Kg	80
Machine dimensions (l x h x w)	mm	1100x700x650

The CI H30 professional hot pressure washer is equipped with a three-phase electric motor to guarantee excellent performance, even in more difficult environments. Featuring a compact, solid and robust structure, it is a high-pressure washer that is perfect for intensive professional use. The back wheels with rubber treads and the front pivoting wheel also make the CI H30 very easy to manage.

The CI H30's painted steel vertical hot box is equipped with a spiral cooling system for the heater and is switched on by a separate electric motor. It also has a double coil and base made of fireproof cement.

The combination of power, pressure and flow rate of this professional pressure washer gives it durability over time, even if used intensely. Because of this, the CI H30 is the ideal solution for cleaning in the handicraft, industrial, automotive, building and agricultural sectors.



KEY ELEMENTS

- Pressure washer with two large back wheels with rubber treads and a front pivoting wheel that facilitate manoeuvrability and transportability
- Practical ergonomic handle to facilitate movement
- Powerful three-phase electric motor with heat protection that makes the pressure washer highly performing, efficient and reliable
- Ceramic 3-piston pump with crank-rod system and brass head for high performance
- Automatic safety valve with pressure shut-off at pump head
- Painted steel vertical hot box equipped with a spiral cooling system for the heater, which is switched on by a separate electric motor, double coil and fireproof cement
- Safety pressure switch to turn off the hot box if there is no water inside
- Time delay panel to switch off the hot box
- Adjustable pressure
- Thermostat
- 22-litre fuel oil tank with drain plug
- Built-in detergent suction
- Practical built-in 6-litre detergent tank
- Inspectionable water feed filter
- Stop&Go: when the machine is temporarily idle, it stops so as to optimize consumption and reduce waste
- Comes with professional accessories: gun with protection and Swivel coupling, wand with high/low pressure head
- ¼" MEG type nozzle with flat jet
- 10-metre reinforced high pressure tube



TECHNICAL DESCRIPTION		CI H30
Max pressure	bar/psi	190/2800
Max flow rate	l/h	780
Type	-	hot water
$\Delta^{\circ}t$	$^{\circ}C$	45
Power consumption	KW	5,0
Power supply	V/Hz	400/50
Motor	type/hp	three-phase electric with heat protection
Rotation speed	rpm	1450
Pump	type	ceramic piston with crank-rod system
Pump head	material	brass
Net weight	Kg	85
Machine dimensions (lhxwx)	mm	1000x820x570

The CI H40 EM INOX professional hot pressure washer features a compact structure and a robust stainless steel body. It is a high pressure machine that is very easy to handle, thanks to the four large wheels that facilitate transport and movement.

The CI H40 EM INOX is equipped with a high efficiency stainless steel hot box powered by fuel oil that is capable of supplying hot water with a temperature of up to 150°C, therefore making it perfect for removing even the most stubborn dirt. The structure of this professional pressure washer makes it perfect for use in difficult environments and in the presence of corrosives, therefore making it ideal for use on ships and in the transport sector.

The CI H40 EM INOX's components and technologies guarantee excellent performance and durability over time, making it the perfect cleaning solution for the food, handicraft and industrial industries.



KEY ELEMENTS

- Pressure washer with four large wheels with rubber treads that facilitate manoeuvrability and transportability
- Robust structure with stainless steel cover (AISI 430)
- Powerful three-phase electric motor with thermal-magnetic protection that makes the pressure washer highly performing, efficient and reliable
- Ceramic 3-piston pump with crank-rod system and brass head for high performance
- Automatic safety valve
- 3 24V pressure switches
- High efficiency stainless steel (AISI 430) hot box powered by fuel oil
- Adjustable pressure
- 150°C thermostat
- Switch-off system for: micro leaks, no water or if the motor overheats
- Low-voltage instrument panel
- Error, fuel oil, voltage and stop warning lights
- 24-litre fuel oil tank
- Built-in adjustable detergent suction
- Inspectionable water feed filter
- Comes with professional accessories: gun with protection and Swivel coupling, wand with high/low pressure head
- 1/4" MEG type nozzle with flat jet
- 10-metre reinforced high pressure tube
- Accessory holder and tube storage on the side



TECHNICAL DESCRIPTION		CI H40 EM INOX
Max pressure	bar/psi	230/3300
Max flow rate	l/h	900
Type	-	hot water
Δ°t	°C	60
Power consumption	KW	7,4
Power supply	V/Hz	400/50
Motor	type/hp	three-phase electric with thermal-magnetic protection
Rotation speed	rpm	1450
Pump	type	ceramic piston with crank-rod system
Pump head	material	brass
Net weight	Kg	150
Machine dimensions (lxhxxw)	mm	1180x960x730

The CI H50 is the professional hot pressure washer designed to meet the most extreme cleaning and sanitization needs. Thanks to its excellent performance, innovative technology and ease of use, it is a high-pressure washer that can be used for frequent jobs that require the highest output.

The simple yet functional design of the CI H50 makes it very easy to handle, thanks to the four large wheels with rubber treads that facilitate its transport. At the same time, the stainless steel hot box of this professional pressure washer is capable of supplying hot water with a temperature of up to 150°C, therefore making it ideal for removing even the most stubborn, caked on dirt.

The combination of performance and power allows the CI H50 to be the perfect professional pressure washer for the industrial, handicraft, automotive and transport industries.



KEY ELEMENTS

- Pressure washer with four large wheels with rubber treads that facilitate manoeuvrability and transportability
- Powerful three-phase electric motor with heat protection that makes the pressure washer highly performing, efficient and reliable
- Ceramic 3-piston pump with crank-rod system and brass head for high performance
- Automatic safety valve with pressure shut-off at pump head
- Safety pressure switch to turn off the hot box if there is no water inside
- Painted steel vertical hot box equipped with a spiral cooling system for the heater, which is switched on by a separate electric motor, double coil and fireproof cement
- Adjustable pressure
- Thermostat
- Microleak reporting system
- Time delay panel to switch off the hot box
- Low-voltage instrument panel
- Warning lights for voltage, fuel oil and thermostat flame to adjust water temperature
- 24-litre fuel oil tank with drain plug
- Water tank with floating indicator
- Built-in detergent suction
- Practical built-in 6-litre detergent tank
- Inspectionable water feed filter
- Comes with professional accessories: gun with protection and Swivel coupling, wand with high/low pressure head
- ¼" MEG type nozzle with flat jet
- 10-metre reinforced high pressure tube



TECHNICAL DESCRIPTION		CI H50
Max pressure	bar/psi	180/2600
Max flow rate	l/h	1260
Type	-	hot water
$\Delta^{\circ}t$	$^{\circ}C$	55
Power consumption	KW	7,4
Power supply	V/Hz	400/50
Motor	type/hp	three-phase electric with heat protection
Rotation speed	rpm	1450
Pump	type	ceramic piston with crank-rod system
Pump head	material	brass
Net weight	Kg	135
Machine dimensions (l x h x w)	mm	980x920x590

Sanit

Comac offers a range of professional solutions for sanitizing floors and vertical surfaces quickly and effectively. These are latest-generation machines that enable speedy hygienization of both small and large environments.

Spray gun **sanitizers**

The use of a sanitizing spray gun allows the sanitizing solution to be distributed over surfaces in an efficient and uniform manner. As the machine is light and easily transportable, it can be easily combined with a floor scrubber to spray disinfectant solutions on surfaces that have just been cleaned. Furthermore, the accessories available make the sanitizing spray gun comfortable to use and allow hygienization operations to be performed for several hours, at any time and in any place.



E-Spray

Comac

Trolley sanitizers

Comac trolley sanitizers enable sanitizing to take place wherever necessary. Precisely because they are compact and transportable, they allow the user to move freely in order to simplify the sanitization operations in small and medium sized environments, including those that are cluttered.

These sanitizers are characterized by a process of breakdown of the hygienizing or sanitizing product, enabling very small particles to be produced which do not wet the treated surfaces.



SANEX

E-Spray is a professional gun sprayer designed to distribute disinfectant solutions effectively and uniformly on surfaces.

Comac E-Spray Electrostatic is a sanitizing spray gun that exploits the principle of electrostatic induction to distribute disinfectant solutions on surfaces effectively and evenly; it's an electrostatic spray gun. The electrostatic charge means that the droplets are attracted to the surface they're directed towards and generate a genuine hygienizing coating when they settle on it.

Comac E Spray is lightweight and genuinely comfortable because it's powered by a lithium battery that allows several hours of hygienization, freely and anywhere, without worrying about the cable. The solution is sprayed in tiny, light droplets that can get to every point of the area concerned and settle effectively.

For effective disinfection, always follow the instructions for using the disinfectant solution provided by the manufacturer.



KEY ELEMENTS

- An electrostatically charged spray means homogeneous distribution of the solution across the entire surface, increasing sanitization quality (E-Spray Electrostatic)
- The solution dispensed adheres quickly to all surfaces, including curved ones, doesn't join the droplets together and reaches even areas that are difficult to get to
- The solution is micronized into small particles, dries quickly and doesn't wet the surfaces or cause dripping
- Micronization allows hygienizing solution to be saved, up to 65%, and therefore longer operation
- The limited dimensions allow the operator to extend sanitization operations even to small environments like toilets or offices
- Very rapid distribution of solution and resulting time savings
- Lightweight and practical so that the operator can work for several hours without tiring
- Reduces the risk of cross contamination between surfaces
- Various nozzles are available for creating droplets of various sizes according to requirements and applications (E-Spray Electrostatic - Optional)
- Operation can be doubled with a spare battery
- Optional Long Range backpack for an additional 2-liter tank
- Convenient supporting crossbody strap to increase operator comfort
- Antibacterial plastics: additive included when molding E-Spray Electrostatic that allows the bacterial load to be kept at lower average levels than on standard plastics



TECHNICAL DATA		E-SPRAY	E-SPRAY Electrostatic
Theoretical productivity	up to sqm/h	350	350
Solution tank	l	1	1
Dimensions of nozzle	mm	0,3	0,3
Battery charger	V/Ah	18/0,4	18/2
Autonomy of tank	min	22	22
Power supply	-	Battery Li-ion 18 V 2000 mAh (Standard) Battery Li-ion 18 V 4000 mAh (Optional)	Battery Li-ion 18 V 2000 mAh (Standard) Battery Li-ion 18 V 4000 mAh (Optional)
Autonomy up to	h	8 with 4Ah battery	8 with 4Ah battery
Machine dimensions (Lxhxa)	mm	417x280x90	417x280x90

Sanex is a small compressor sanitizer that's perfect for spraying sanitizing products in small and medium-sized environments. Lightweight and easy to transport, Sanex is the ideal solution for sanitizing and deodorizing rooms and offices in any sector. The battery-powered versions also allows even more freedom of movement in places without a power socket.

This equipment adapts to various requirements, allowing the use of sanitizing, disinfectant or deodorizing solutions and use inside cars and air conditioning circuits.

All this makes Sanex extremely versatile. It can also be used in larger environments like entrance areas and convention rooms or offices, bars, restaurants, shops, schools, gyms and any other place where effective sanitization is needed.

For effective disinfection, always follow the instructions for using the disinfectant solution provided by the manufacturer.



KEY ELEMENTS

- Compact and easy to handle
- Easy to use: the equipment is started using the dedicated master switch and the dedicated spray gun is used to direct the nebulized solution easily and effectively
- The solution supply takes place so as to ensure extended and distributed product permanency in the air of the treated location, to reach and sanitize all surfaces therein
- The liquid is nebulized with a high speed jet of air and further passage through an orifice that ensures precise atomization, producing particles of a diameter of about 8 microns. The atomization of the chemical into such a small size allows the product dispensed to evaporate, changing from a liquid to a gaseous state.
- The exclusive dispenser gun is the point where the solution mixes with the air
- The spiral tube links the machine to the spray gun. Its spiral shape means that it can extend up to 3.5 m, to reach places it would be difficult to get to otherwise
- Easy to transport
- 4 wheels to increase machine stability
- Easy access to the internal machine components to make it easier to refill with solution and for easy maintenance
- Equipped with an independent air compressor
- Hour meter to check working hours (Sanex B)
- Height-adjustable front handle to make transporting Sanex B easier and sanitize even on the move
- Sanex B is equipped with 2 x 12 V batteries and can work for up to 2 hours non stop
- Sanex B has an on-board battery charger so it can be recharged easily where there's a suitable power socket

TECHNICAL DATA		SANEX 110V	SANEX 220V	SANEX 24V
Solution tank	l	4,5	4,5	4,5
Consumption of product	rpm	30	30	30
Maximum length of extendible spiral hose	m	3,5	3,5	3,5
Air compressor motor	W	350	350	350
Solution pump no.	W	2 (16)	2 (16)	2 (16)
Power supply	V	110/220V/50-60Hz	220-230V/50-60Hz	24
Length of power supply cable	m	10	10	10
Net weight	Kg	18	18	18
Weight with batteries	Kg	-	-	41,5
Machine dimensions (Lxhxa)	mm	740x650x355	740x650x355	745x650x355

Technologies' key



Comac Easy-Clean Tanks



Intelligent Pressure Monitoring



Comac Antibacterial Tanks



Working program selector



Comac Corrosion Protection



Display Touch Screen



Electrostatic hygienization



Rear view camera



Comac Electrostatic Disinfector



Hybrid



Lithium battery



Anti-collision sensor



Eco mode



Moving brush head



Comac Dosing System



Emergency stop



Non Stop Cleaning



SST - Spray & Suction Tool



ReWater



LED lighting



Constant Solution Flow



Air conditioning



Stop&Go



Nettoyage orbital



Solution Smart Control



Electric filter shaker



Comac Fleet Care



Intelligent turbine support



Easy Fleet



Coaxial turbine



Pressure Monitoring



Twin Action System



Blue Safety Spotlight

COMAC S.p.A. Via Maestri del Lavoro, 13 - 37059 Santa Maria di Zevio - Verona - ITALY
Tel. 045 8774222 - www.comac.it - com@comac.it

Comac S.p.A. org. cert. ISO 9001, ISO 14001, ISO 45001, ISO 14064-1, SA 8000

